



PrimaVision Twin for CDM

HID-PV C 2x35 /S CDM 220-240V 50/60Hz

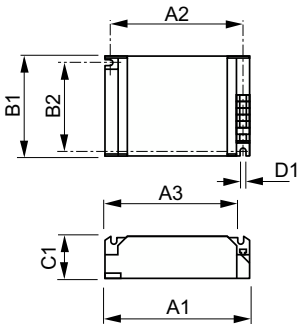
Dual CDM lamp operation, single HID electronic gear – improves cost effectiveness and increases luminaire design flexibility

Product data

Operating and Electrical	
Input Voltage	220 to 240 V
Line Frequency	50 to 60 Hz
Input Frequency	50 to 60 Hz
Earth Leakage Current (Max)	0.5 mA
Inrush Current Width	0.5 ms
Inrush Current Peak (Max)	33 A
Number of Products on MCB (16A Type B) (Nom)	14
Wiring	
Connector Type	Insert
Temperature	
Ambient temperature range	-20 °C to 55 °C
T-Case Lifetime (Nom)	70 °C
T-Case Maximum (Max)	80 °C
Mechanical and Housing	
Housing	/S
Approval and Application	
Approval Marks	F-Marking CE marking ENEC certificate CB Certificate
Product Data	
Order product name	HID-PV C 2x35 /S CDM 220-240V 50/60Hz
Full product name	HID-PV C 2x35 /S CDM 220-240V 50/60Hz
Full product code	872790089572800
Order code	913700656866
Material Nr. (12NC)	913700656866
Numerator - Quantity Per Pack	1
EAN/UPC - Product/Case	8711500881892
Numerator - Packs per outer box	12
EAN/UPC - Case	8727900895728

PrimaVision Twin for CDM

Dimensional drawing



Product	D1	C1	A1	A2	B1	B2
HID-PV C 2x35 /S CDM 220-240V 50/60Hz	4.5 mm	32.0 mm	135.0 mm	123.5 mm	75.0 mm	63.5 mm

