

# PrimaVision Mini for CDM

## HID PV m 50 /S CDM HPF 220-240V 50/60Hz

Miniature HID electronic gear for PGJ5 CDM lamps – freeing up the boundaries of creativity and innovation in luminaire design

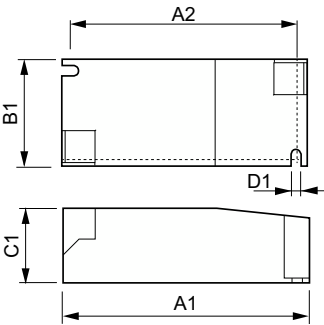
### Product data

Operating and Electrical	
Input Voltage	220 to 240 V
Line Frequency	50 to 60 Hz
Input frequency	50 to 60 Hz
Earth leakage current (max.)	0.25 mA
Inrush current width	0.40 ms
Inrush current peak (max.)	25 A
Number of products on MCB (16 A type B) (nom.)	24
Wiring	
Cable length from device to lamp	0.5 m
Connector type	Insert
Temperature	
Ambient temperature range	-20°C to 50°C
T-case lifetime (nom.)	75 °C
T-Case maximum (max.)	80 °C
Mechanical and Housing	
Housing	/S

Approval and Application	
Approval marks	F-Marking CE marking ENEC certificate VDE certificate
Product Data	
Order product name	HID-PV m 50 /S CDM HPF 220-240V 50/60Hz
Full product name	HID PV m 50 /S CDM HPF 220-240V 50/60Hz
Full EOC	871829111573100
Order code	11573100
Material no. (12 NC)	913700665966
Local order code	PVM50MSCDM
SAP numerator – quantity per pack	1
EAN/UPC – Product/Case	8718291115731
Numerator – packs per outer box	12
EAN/UPC - Case	8718291115748

PrimaVision Mini for CDM

Dimensional drawing



Product	D1	C1	A1	A2	B1
HID-PV m 50 /S CDM HPF 220-240V 50/60Hz	4.2 mm	30.2 mm	97.3 mm	88.3 mm	43.3 mm

