

PrimaVision Mini for CDM

HID-PV m 50 /S CDM HPF 220-240V 50/60Hz

Miniature HID electronic gear for PGJ5 CDM lamps – freeing up the boundaries of creativity and innovation in luminaire design

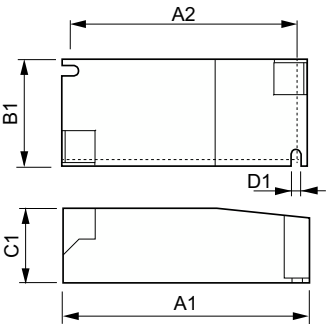
Product data

| Operating and Electrical | |
|--|-----------------|
| Input Voltage | 220 to 240 V |
| Line Frequency | 50 to 60 Hz |
| Input Frequency | 50 to 60 Hz |
| Earth Leakage Current (Max) | 0.25 mA |
| Inrush Current Width | 0.40 ms |
| Inrush Current Peak (Max) | 25 A |
| Number of Products on MCB (16A Type B) (Nom) | 24 |
| Wiring | |
| Cable Length From Device to Lamp | 0.5 m |
| Connector Type | Insert |
| Temperature | |
| Ambient temperature range | -20 °C to 50 °C |
| T-Case Lifetime (Nom) | 75 °C |
| T-Case Maximum (Max) | 80 °C |
| Mechanical and Housing | |
| Housing | /S |

| Approval and Application | |
|---------------------------------|---|
| Approval Marks | F-Marking CE marking ENEC certificate VDE certificate |
| Product Data | |
| Order product name | HID-PV m 50 /S CDM HPF 220-240V 50/60Hz |
| Full product name | HID-PV m 50 /S CDM HPF 220-240V 50/60Hz |
| Full product code | 871829111573100 |
| Order code | 913700665966 |
| Material Nr. (12NC) | 913700665966 |
| Numerator - Quantity Per Pack | 1 |
| EAN/UPC - Product/Case | 8718291115731 |
| Numerator - Packs per outer box | 12 |
| EAN/UPC - Case | 8718291115748 |

PrimaVision Mini for CDM

Dimensional drawing



| Product | D1 | C1 | A1 | A2 | B1 |
|--|--------|---------|---------|---------|---------|
| HID-PV m 50 /S CDM HPF 220-240V 50/60Hz | 4.2 mm | 30.2 mm | 97.3 mm | 88.3 mm | 43.3 mm |

