

# AspiraVision Compact for CDM

## HID-AV C 35-70 /S CDM 220-240V 50/60Hz

AspiraVision is the mark of excellence in HID electronic gear technology – high-end, compact, lightweight and easy to use, with added features for optimal performance of 35, 50 and 70 W CDM lamps. The recently added switching function provides maximum flexibility for users by integrating three different wattage choices into a single driver.

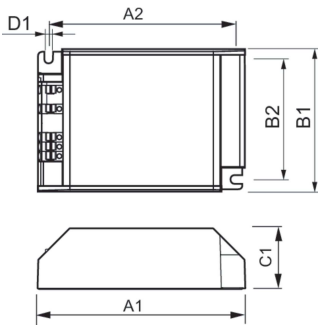
### Product data

|  |                 |  |  |
|--|-----------------|--|--|
| <b>Operating and Electrical</b>              |                 | <b>Controls and Dimming</b>            |  |
| Input Voltage                                | 220 to 240 V    | Control Interface                      | -  |
| Line Frequency                               | 50 to 60 Hz     |  |  |
| Input Frequency                              | 50 to 60 Hz     | <b>Mechanical and Housing</b>          |  |
| Earth Leakage Current (Max)                  | 0.25 mA         | Housing                                | /S   |
| Inrush Current Width                         | 10 ms           |  |  |
| Inrush Current Peak (Max)                    | 8 A             | <b>Approval and Application</b>        |  |
| Number of Products on MCB (16A Type B) (Nom) | 58              | Surge Protection (Common/Differential) | EN61547 (L-L 2kV, L-G 4kV) kV  |
|  |                 | Safety Standard                        | EN 61347-2-12 and 2-1  |
|  |                 | Environmental Standard                 | ISO 14001  |
|  |                 | Approval Marks                         | F-Marking CE marking ENEC certificate VDE certificate CB Certificate VDE-EMC marking |
| <b>Wiring</b>                                |                 | <b>Product Data</b>                    |  |
| Cable Length From Device to Lamp             | 2 m             | Order product name                     | HID-AV C 35-70 /S CDM 220-240V 50/60Hz   |
| Connector Type                               | WAGO series 804 | Full product name                      | HID-AV C 35-70 /S CDM 220-240V 50/60Hz   |
|  |                 | Full product code                      | 871829123310700  |
| <b>Temperature</b>                           |                 | Order code                             | 913700683866   |
| Ambient temperature range                    | -20 °C to 55 °C | Material Nr. (12NC)                    | 913700683866   |
| T-Case Lifetime (Nom)                        | 80 °C           | Numerator - Quantity Per Pack          | 1  |

# AspiraVision Compact for CDM

|                                 |               |
|---------------------------------|---------------|
| EAN/UPC - Product/Case          | 8718291233107 |
| Numerator - Packs per outer box | 12            |
| EAN/UPC - Case                  | 8718291233114 |

## Dimensional drawing



| Product                                   | D1     | C1      | A1       | A2      | B1      | B2      |
|---|--------|---------|----------|---------|---------|---------|
| HID-AV C 35-70 /S CDM<br>220-240V 50/60Hz | 4.5 mm | 32.1 mm | 110.0 mm | 98.5 mm | 75.0 mm | 63.5 mm |

