



AspiraVision Compact for CDM

HID-AV C 35-70 /I CDM 220-240V 50/60Hz

AspiraVision is the mark of excellence in HID electronic gear technology – high-end, compact, lightweight and easy to use, with added features for optimal performance of 35, 50 and 70 W CDM lamps. The recently added switching function provides maximum flexibility for users by integrating three different wattage choices into a single driver.

Product data

Operating and Electrical	
Input Voltage	220 to 240 V
Line Frequency	50 to 60 Hz
Input frequency	50 to 60 Hz
Earth leakage current (max.)	250 mA
Inrush current width	10 ms
Inrush current peak (max.)	8 A
Number of products on MCB (16 A type B) (nom.)	58
Wiring	
Cable length from device to lamp	2 m
Connector type	WAGO series 804
Temperature	
Ambient temperature range	-20°C to 45°C
T-case lifetime (nom.)	80 °C

Controls and Dimming	
Control interface	-
Mechanical and Housing	
Housing	/I
Approval and Application	
Surge Protection (Common/Differential)	EN61547 (L-L 2 kV, L-G 4 kV) kV
Safety standard	EN 61347-2-12 and 2-1
Approval marks	EMC HEE F-Marking CE marking ENEC certificate VDE certificate CB certificate VDE marking C-Tick certificate China quality certificate

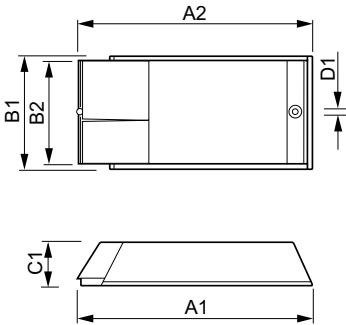
Product Data	
Order product name	HID-AV C 35-70 /I CDM 220-240V 50/60Hz
Full product name	HID-AV C 35-70 /I CDM 220-240V 50/60Hz
Full EOC	871829123312100
Order code	23312100
Material no. (12 NC)	913700684066

AspiraVision Compact for CDM

Local order code	HIDAVTW3570I
SAP numerator – quantity per pack	1
EAN/UPC – Product/Case	8718291233121
Numerator – packs per outer box	12

EAN/UPC - Case	8718291233138
----------------	---------------

Dimensional drawing



Product	D1	C1	A1	A2	B1
HID-AV C 35-70 /I CDM 220-240V 50/60Hz	4.8 mm	34.7 mm	189.2 mm	170.7 mm	83.5 mm

