



# DynaVision Programmable Xtreme for CPO

## HID-DV PROG Xt 60 CPO Q 208-277V

Highly reliable and flexible electronic drivers for CPO lamps; designed to save on energy costs via integrated controls and to reduce maintenance costs thanks to 80,000-hour lifetime and integrated lightning protection. The DynaVision Programmable product family is the perfect basis for any sort of lighting management solution.

### Product data

Operating and Electrical	
Input Voltage	208-240-277 V
Line Frequency	50 to 60 Hz
Input Frequency	50 to 60 Hz
Power Factor 50% Load (Min)	0.94
Earth Leakage Current (Max)	0.7 mA
Inrush Current Width	0.24 ms
Input Current (Nom)	0.33 A
Inrush Current Peak (Max)	28 A
Number of Products on MCB (16A Type B) (Nom)	11
Wiring	
Cable Length From Device to Lamp	10 m
Connector Type	WAGO series 804

Temperature	
Ambient temperature range	-30 °C to 55 °C
T-Case Lifetime (Nom)	80 °C
Controls and Dimming	
Control Interface	PROG
Mechanical and Housing	
Housing	Q
Approval and Application	
Surge Protection (Common/Differential)	EN61547 (L-L 2kV, L-G 4kV), 10 kV TIL
Safety Standard	IEC 607, 609, 926, 928 [No Standard for HID Lamp drivers exists. Requirements in these standards to be used if considered relevant for the product.]
Environmental Standard	ISO 14001

# DynaVision Programmable Xtreme for CPO

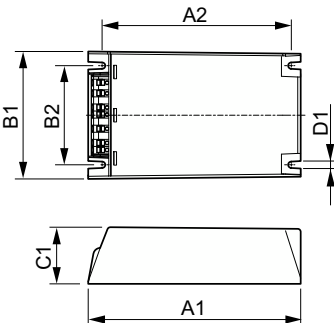
Approval Marks	F-Marking CE marking CB Certificate ENEC certificate VDE-EMV certificate
----------------	--

## Product Data

Order product name	HID-DV PROG Xt 60 CPO Q 208-277V
Full product name	HID-DV PROG Xt 60 CPO Q 208-277V
Full product code	871829124149200
Order code	913700685766

Material Nr. (12NC)	913700685766
Numerator - Quantity Per Pack	1
EAN/UPC - Product/Case	8718291241492
Numerator - Packs per outer box	12
EAN/UPC - Case	8718291241508

## Dimensional drawing



Product	D1	C1	A1	A2	B1	B2
HID-DV PROG Xt 60 CPO Q 208-277V	4.5 mm	40.0 mm	150.0 mm	133.6 mm	90.0 mm	70.0 mm

