



HF-Selectalume II HT for TL5/TL-D lamps

HF-S 254 TL5 II HT 220-240V 50/60Hz

HF-Selectalume II HT ballasts have been designed to ensure a long service life under tough operating conditions. They offer a high degree of reliability, quality and efficiency, which ensures uninterrupted lamp operation and maximum safety. HF Selectalume II HT ballasts are available not only for T5 lamps, but now also for TL-D lamps. They are intended for use with outdoor and indoor lighting fixtures such as waterproof recessed luminaires, which are largely used in car parks, industrial bays, offices, and other applications. The products are CE- and ENEC-compliant. The ballast is primarily designed for Indoor application. For outdoor application, the luminaire should be minimum Classland need to be sufficiently protected against water & dust. The installation should also be guard against any lightening surge or any other necessary electrical protection as deemed in such typical installation & application.

Product data

Operating and Electrical		Connector Type Output Terminals	
Input Voltage	220 to 240 V	WAGO 744 connector [Suitable for manual wiring]	
Line Frequency	50 to 60 Hz		
Input Frequency	50 to 60 Hz	Temperature	
Earth Leakage Current (Max)	0.5 mA	Ambient temperature range	
Inrush Current Width	0.38 ms	-25 °C to 60 °C	
Inrush Current Peak (Max)	30 A	T-Case Lifetime (Nom)	
Number of Products on MCB (16A Type B) (Nom)	12	80 °C	
		T-Case Maximum (Max)	
		80 °C	
		Mechanical and Housing	
		Housing	
		L 360x30x21	
		Approval and Application	
		Ingress protection code	
		IP20 [Finger-protected]	
Wiring			
Connector Type Input Terminals	WAGO 744 connector		

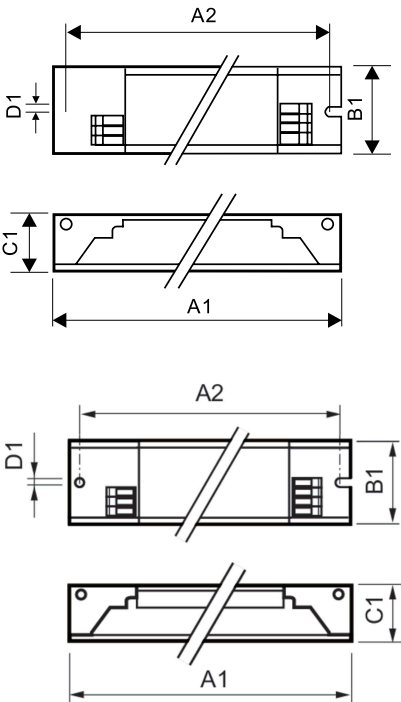
HF-Selectalume II HT for TL5/TL-D lamps

Energy Efficiency Index	A2 BAT
Approval Marks	PSG F-Marking CE marking ENEC certificate CCC certificate C-Tick certificate TISI marking SIRIM approval CCC certificate

Product Data	
Order product name	HF-S 254 TL5 II HT 220-240V 50/60Hz
Full product name	HF-S 254 TL5 II HT 220-240V 50/60Hz
Full product code	871829165613500

Order code	913700689866
Material Nr. (12NC)	913700689866
Numerator - Quantity Per Pack	1
EAN/UPC - Product/Case	8718291656135
Numerator - Packs per outer box	12
EAN/UPC - Case	8718291656142

Dimensional drawing



Product
HF-S 254 TL5 II HT 220-240V 50/60Hz

Product	A1	B1	C1	A2	B2	D1
HF-S 254 TL5 II HT 220-240V 50/60Hz	360.0 mm	30.0 mm	21.5 mm	350.0 mm		4.2 mm

