



# DynaVision LumiStep Xtreme for CPO

## HID-DV LS6 Xt 140 CPO Q 208-277V

Highly reliable electronic drivers for CPO lamps; designed to save energy via integrated one-step dimming and to reduce maintenance costs thanks to 80,000-hour lifetime and integrated lightning protection

### Product data

Operating and Electrical	
Input Voltage	208-240-277 V
Line Frequency	50 to 60 Hz
Input frequency	50 to 60 Hz
Power factor 50% load (min.)	0.98
Earth leakage current (max.)	0.7 mA
Inrush current width	0.47 ms
Input current (nom.)	0.75 A
Inrush current peak (max.)	52 A
Number of products on MCB (16 A type B) (nom.)	5
Wiring	
Cable length from device to lamp	10 m
Connector type	WAGO series 804
Temperature	
Ambient temperature range	-30 °C to 55 °C
T-case lifetime (nom.)	80 °C

Controls and Dimming	
Control interface	LS-6
Mechanical and Housing	
Housing	Q
Approval and Application	
Surge Protection (Common/Differential)	EN61547 (L-L 2 kV, L-G 4 kV), 10 kV TIL
Safety standard	IEC 607, 609, 926, 928 [No Standard for HID Lamp drivers exists. Requirements in these standards to be used if considered relevant for the product.]
Environmental standard	ISO 14001
Approval marks	F-Marking CE marking ENEC certificate VDE-EMV certificate

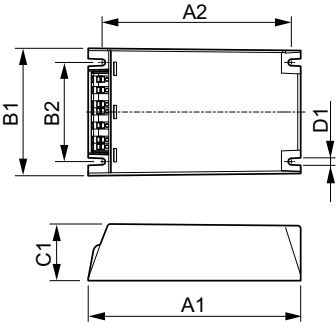
Product Data	
Order product name	HID-DV LS6 Xt 140 CPO Q 208-277V
Full product name	HID-DV LS6 Xt 140 CPO Q 208-277V
Full EOC	871829166912800
Order code	66912800
Material no. (12 NC)	913700691966

# DynaVision LumiStep Xtreme for CPO

Local order code	DVLSXT6140CPOQ
SAP numerator – quantity per pack	1
EAN/UPC – Product/Case	8718291669128
Numerator – packs per outer box	12

EAN/UPC – Case	8718291669135
----------------	---------------

## Dimensional drawing



Product	D1	C1	A1	A2	B1	B2
HID-DV LS6 Xt 140 CPO Q 208-277V	4.5 mm	40.0 mm	150.0 mm	133.6 mm	90.0 mm	70.0 mm

