

PrimaVision Mini for CDM

HID-PV m 20 /S CDM 220-240V 50/60Hz

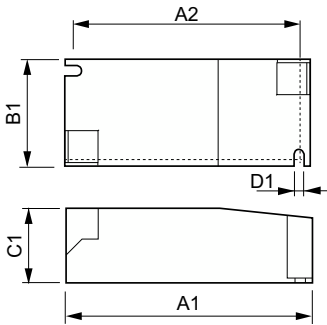
Miniature HID electronic gear for PGJ5 CDM lamps – freeing up the boundaries of creativity and innovation in luminaire design

Product data

Operating and Electrical		Mechanical and Housing	
Input Voltage	220 to 240 V	Housing	/S
Line Frequency	50 to 60 Hz		
Input Frequency	50 to 60 Hz	Approval and Application	
Earth Leakage Current (Max)	0.5 mA	Approval Marks	CE marking ENEC certificate VDE certificate
Inrush Current Width	0.25 ms	Product Data	
Inrush Current Peak (Max)	15 A	Order product name	HID-PV m 20 /S CDM 220-240V 50/60Hz
Number of Products on MCB (16A Type B) (Nom)	32	Full product name	HID-PV m 20 /S CDM 220-240V 50/60Hz
		Full product code	871829167159600
		Order code	67159600
		Material Nr. (12NC)	913700696066
		Numerator - Quantity Per Pack	1
		EAN/UPC - Product/Case	8718291671596
		Numerator - Packs per outer box	12
		EAN/UPC - Case	8718291671602
Wiring			
Cable Length From Device to Lamp	0.5 m		
Connector Type	Insert		
Temperature			
Ambient temperature range	-20 °C to 55 °C		
T-Case Lifetime (Nom)	80 °C		
T-Case Maximum (Max)	80 °C		

PrimaVision Mini for CDM

Dimensional drawing



Product	D1	C1	A1	A2	B1
HID-PV m 20 /S CDM 220-240V 50/60Hz	4.2 mm	30.2 mm	97.3 mm	88.3 mm	43.3 mm

