



HID-Basic ballasts for HPL and HPI(PLUS) lamps

BHL 250L 200

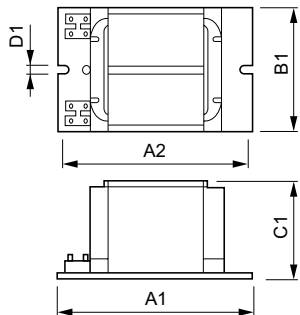
The HID-Basic ballast is an impregnated (HID standard) electromagnetic ballast for HID lamps, for use in combination with an external ignitor.

Product data

Operating and Electrical		Full product name	
Input Voltage	220 V	BHL 250L 200	
Line Frequency	50 Hz	Full product code	
Input Frequency	50 Hz	871016303097530	
		Order code	
		913710100450	
		Material Nr. (12NC)	
		913710100450	
		Numerator - Quantity Per Pack	
		1	
		EAN/UPC - Product/Case	
		8710163148168	
		Numerator - Packs per outer box	
		6	
		EAN/UPC - Case	
		8710163031958	
Wiring			
Connector Type	Screw		
Approval and Application			
Approval Marks	CE marking CCC certificate		
Product Data			
Order product name	BHL 250L 200		

HID-Basic ballasts for HPL and HPI(PLUS) lamps

Dimensional drawing



Product	D1	C1	A1	A2	B1
BHL 250L 200	6.2 mm	64.5 mm	125.0 mm	110.0 mm	75.5 mm

