

Mark 10 Powerline

MARK 10 POWERLINE ELE DIM BALLAST (1) 18W CFL (4-PIN) 120V

For companies looking to make their fixed-output linear T8, 4-pin CFL, and T5/HO fluorescent systems more cost effective and sustainable, Mark 10 Powerline ballasts provide an easy solution without the need for additional control leads. Simply, (1) replace the ballast, (2) replace the switch, (3) dim the lights, that is all it takes. It's that easy to bring the convenience and flexibility of fluorescent dimming to conference rooms, private offices, auditoriums, architectural cove lighting – anywhere dimming is required.

Product data

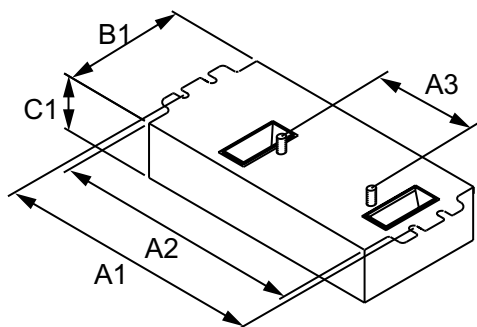
General Information		Input Power (Max)	
Lamp Type	CFQ18W/G24Q	22 W	
Number of Lamps	1 piece/unit	Input Power (Min)	
Ballast Type	Dimmable Fluorescent	7 W	
Base Model	REZ1Q18M2BS	Rated Lamp Power	
Suitable For Outdoor Use	Yes	18 W	
Automatic Restart	Yes		
Operating and Electrical		Wiring	
Input Voltage	120 V	Color Input Terminals	
Input Frequency	60 Hz	BLK & WHT	
Total Harmonic Distortion USA	10 %	Color Output Terminals	
Ignition Method	Programmed Start	RED & BLU	
Crestfactor (Nom)	1.6	Wire Striplength	
Ignition Time (Nom)	1.5 s	0.375 mm	
Ballast Factor (Max)	1	Control Wire Gauge	
Ballast Factor (Min)	0.05	NA	
Power Factor (Nom)	0.99	Lamp Connection	
Input Current (Nom)	0.18 A	Series	
		Wire Length by Color	
		No wires	
		Wire Gauge (Nom)	
		18AWG mm	
		Wire Type	
		Solid	
		Remote Wiring Configuration Allowed	
		No	
		Tandem Wiring Configuration Allowed	
		No	
		Through Wiring Configuration Allowed	
		No	
		Max Ballast-Lamp Distance Remote Wiring	
		No Remote	
		Max Ballast-Lamp Distance Tandem Wiring	
		NA	
		Max Ballast-Lamp Distance Through Wiring	
		NA	

Mark 10 Powerline

Connector Type	Poke-In
Temperature	
T-Case Maximum (Nom)	70 °C
Mechanical and Housing	
Housing Material	Metal
Housing	M2
Housing Dimensions	4.98" x 3.0" x 1.29"
Approval and Application	
EMC Immunity Standard	FCC Consumer
Approval Marks	CSA certificate UL certificate CEC Listing RoHS Compliant
Hum And Noise Level	A

UL Recognized	No
Product Data	
Order product name	MARK 10 POWERLINE ELE DIM BALLAST (1) 18W CFL (4-PIN) 120V
EAN/UPC - Product	781087115084
Order code	116384
Local order code	116384
Numerator - Quantity Per Pack	1
Numerator - Packs per outer box	16
Material Nr. (12NC)	913710231002
Net Weight (Piece)	314.000 g

Dimensional drawing



ELE DIM BALLAST (1) 18W CFL (4-PIN) 120V

Product	A1	A2	A3	B1	C1
MARK 10 POWERLINE REZ1Q18M2BS35M	4.55 in	4.20 in	2.00 in	3.00 in	1.29 in

