



Core & Coil (71A) HPS 200W - 400W

CORE & COIL HID HPS BAL 400W S51 QUAD C&C

The basic ballast is the open core and coil which is most often used as a component within a lighting luminaire. The core and coil also forms the nucleus of Philips Advance's five other ballast configurations.

Product data

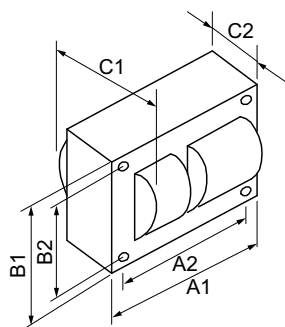
| General Information | | | |
|------------------------------------|-------------------|--------------------------------------|----------------------------------|
| ANSI Code | S51-M169 | Input Current (Starting) | 3.3/1.8/1.5/1.4 A |
| Lamp Type | 400W HPS | Input Current (Short Circuit) | 2.4-3.6/1.4-2.1/1.2-1.8/1-1.55 A |
| Number of Lamps | 1 piece/unit | Secondary Short Circuit Current | 6-7.4 A |
| Circuit Type | CWA | Constant Wattage Deviation | Within Trapezoid |
| Ballast Type | Magnetic HID | Ballast Factor (Nom) | 1.0 |
| Base Model | 71A8493 | Power Factor (Nom) | 0.90 |
| Core Size | 4 x 4 (2 coil) | Nominal Open Circuit Voltage | 190 V |
| Suitable For Outdoor Use | Yes | Input Current (Operating) (Nom) | 3.8/2.2/1.9/1.7 A A |
| Ignitor Catalog Number | LI501-H4 | Input Power (Nom) | 464 W |
| Ignitor Temperature Rating | 105°C | Rated Lamp Watts | 400 W |
| Capacitor Value | 55 MFD | Wiring | |
| Capacitor Requirements | 240V | Wire Striplength | 0.5 mm |
| Capacitor Temperature Rating | 105°C | Wire Length by Color | 12" |
| Capacitor Diameter/Oval Dimensions | 1.85 in | Wire Type | Stranded |
| Automatic Restart | No | Remote Wiring Configuration Allowed | Yes |
| Operating and Electrical | | Tandem Wiring Configuration Allowed | No |
| Input Voltage | 120/208/240/277 V | Through Wiring Configuration Allowed | No |
| Input Frequency | 60 Hz | Max Ballast-Lamp Distance Remote | 2' |
| Inp. Current (Open Circuit) | 2/1.2/0.95/0.85 A | Wiring | |

Core & Coil (71A) HPS 200W - 400W

| | |
|-----------------------------------|------------------------------------|
| Recommended Fuse Value | 10/8/5/5 A |
| Mechanical and Housing | |
| Housing | NA |
| Housing Dimensions | NA |
| Approval and Application | |
| Open Circuit Voltage Test (Volts) | 170-210 V |
| EMC Immunity Standard | NA |
| Approbation Marks | ULR CSA certificate RoHS Compliant |
| Temperature Marking | D/D/D/D |
| Sound Rating | NA |
| UL Recognized | Yes |
| Hipot Test (1 Minute) | 2000 V |
| Hipot Test (2 Seconds) | 2500 V |

| | |
|---------------------------------|---|
| UL Insulation Class | H(180°C) |
| UL Temperature Code | 1029D |
| Product Data | |
| Order product name | CORE & COIL HID HPS BAL 400W S51 QUAD C&C |
| EAN/UPC - Product | 781087067437 |
| Order code | 71A8493620DA |
| Numerator - Quantity Per Pack | 1 |
| Numerator - Packs per outer box | 4 |
| Material Nr. (12NC) | 913710657702 |
| Net Weight (Piece) | 6.156 kg |

Dimensional drawing



HPS BAL 400W S51 QUAD C&C

| Product | C1 | C2 |
|---|---------|---------|
| CORE & COIL HID HPS BAL 400W S51 QUAD C&C | 4.00 in | 2.09 in |

