



Core & Coil (71A) MH ~GT~ 450W

CORE & COIL HID 71A6500536

The basic ballast is the open core and coil which is most often used as a component within a lighting luminaire. The core and coil also forms the nucleus of Philips Advance's five other ballast configurations.

Product data

General Information			
ANSI Code	M47	Secondary Short Circuit Current	4.90-6.10 A
Lamp Type	1000W MH	Constant Wattage Deviation	10%
Number of Lamps	1 piece/unit	Power Factor (Nom)	0.90
Circuit Type	CWA	Open Circuit Voltage	415 V
Ballast Type	Magnetic HID	Input Power (Nom)	1070 W
Base Model	71A6500	Rated Lamp Power	1000 W
Core Size	4 1/4 X 4 3/4 (2 coil)	Wiring	
Suitable For Outdoor Use	Yes	Wire Striplength	0.5 mm
Ignitor Catalog Number	-	Wire Length by Color	12"
Ignitor Temperature Rating	-	Wire Type	standard
Capacitor Catalog Number	MD2409-100	Remote Wiring Configuration Allowed	Yes
Capacitor Temperature Rating	90°C	Tandem Wiring Configuration Allowed	No
Capacitor Diameter/Oval Dimensions	1.75 in	Through Wiring Configuration Allowed	No
Capacitor Height	3.9 in	Max Ballast-Lamp Distance Remote Wiring	-
Automatic Restart	No	Recommended Fuse Value	20 A
Operating and Electrical		Approval and Application	
Input Voltage	120 V	Open Circuit Voltage Test (Volts)	370-460 V
Input Frequency	60 Hz	EMC Immunity Standard	NA
Input Current (Short Circuit)	5.30-6.00 A	Approval Marks	CSA certificate

Core & Coil (71A) MH ~GT~ 450W

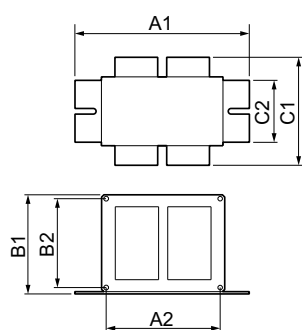
Temperature Marking	D
Hum And Noise Level	NA
UL Recognized	Yes
Hipot Test (1 Minute)	2000 V
Hipot Test (2 Seconds)	2500 V
UL Insulation Class	H(180°C)
UL Temperature Code	1029D

Product Data

Order product name	CORE & COIL HID 71A6500536
--------------------	----------------------------

EAN/UPC - Product	781087074213
Order code	913710670202
Numerator - Quantity Per Pack	1
Numerator - Packs per outer box	100
Material Nr. (12NC)	913710670202
Net Weight (Piece)	8.651 kg

Dimensional drawing



CORE & COIL HID 71A6500536

Product	A1	B1	C1	C2
CORE & COIL HID 71A6500536	4.75 in	4.25 in	5.25 in	3.32 in

