



SmartMate

SMARTMATE ELE BALLAST (2) 26W CFL (4-PIN) 120-277V

Offering maximum versatility, the Philips Advance family of SmartMate ballasts for 4-pin compact fluorescent lamps drive a broad range of quad and triple-tube, circline, 2D, and long twin-tube lamps. SmartMate ballasts' energy efficient design, compact and lightweight housing, and user-friendly features make these ballasts an ideal choice for fixture manufacturers, retrofitters, and MRO replacement.

Product data

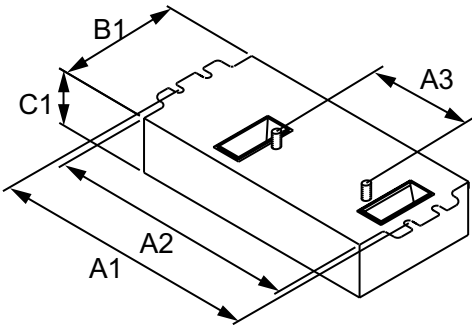
General Information	
Lamp Type	CFQ26W/G24Q
Number of Lamps	1/2 piece/unit
Ballast Type	Electronic Fluorescent
Base Model	ICF2S26M1BSQS
Suitable For Outdoor Use	Yes
Automatic Restart	Yes
Operating and Electrical	
Input Voltage	120 to 277 V
Input Frequency	50 to 60 Hz
Max THD	10 %
Starting Method	Programmed Start
Lamp Current Crest Factor (Nom)	1.7
Ignition Time (Nom)	1.5 s
Ballast Factor (Nom)	1
Power Factor (Nom)	0.98
Input Current (Operating) (Max)	0.43 A
Input Current (Operating) (Min)	0.19 A
Input Power (Nom)	51-51 W

Rated Lamp Watts	26 W
Wiring	
Color Input Terminals	BLK & WHT
Color Output Terminals	RED, YEL & BLU
Wire Striplength	0.375 mm
Lamp Connection	Series
Wire Length by Color	No wires
Wire Gauge (Nom)	18AWG mm
Wire Type	Solid
Remote Wiring Configuration Allowed	Yes
Tandem Wiring Configuration Allowed	Yes
Through Wiring Configuration Allowed	Yes
Max Ballast-Lamp Distance Remote	1-L = 15' / 2-L = 6'
Wiring	
Max Ballast-Lamp Distance Tandem	2-L: Red = 6'
Wiring	
Max Ballast-Lamp Distance Through	2-L: Red = 6'
Wiring	
Connector Type	Poke-In

Temperature	
T-Case Maximum (Nom)	75 °C
Mechanical and Housing	
Housing Material	Metal
Housing	M1
Housing Dimensions	4.98" x 2.4" x 0.98"
Approval and Application	
EMC Immunity Standard	FCC Non-Consumer
Approbation Marks	CSA certificate UL certificate CEC Listing RoHS Compliant
Sound Rating	A

UL Recognized	No
Product Data	
Order product name	SMARTMATE ELE BALLAST (2) 26W CFL (4-PIN) 120-277V
EAN/UPC - Product	781087059241
Order code	ICF2S26M1BSQS35M
Numerator - Quantity Per Pack	1
Numerator - Packs per outer box	16
Material Nr. (12NC)	913710817302
Net Weight (Piece)	196.000 g

Dimensional drawing



ELE BALLAST (2) 26W CFL 4-PIN 120-277V

Product	A1	A2	A3	B1	C1
SMARTMATE ELE BALLAST (2) 26W CFL (4-PIN) 120-277V	4.60 in	4.20 in	2.00 in	2.40 in	0.98 in

