



# HF-Selectalume II for TL-D lamps

## HF-S 3/418 TL-D II 220-240V 50/60Hz

HF-Selectalume II TL-D is the most cost-effective, reliable and outstanding solution for fluorescent lamps. These ballasts are part of an overall high-efficiency lighting system that may help you or your customers to achieve any international or local energy code you need to comply with. HF-Selectalume II TL-D ballasts are the ideal choice for a broad range of new construction and retrofit applications within the commercial sector, including general surface mounting or office lighting, parking garages, warehouses, waterproof and other applications.

### Product data

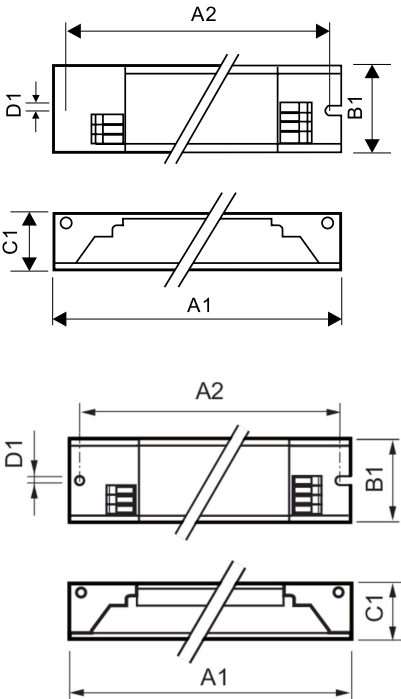
<b>Operating and Electrical</b>		<b>T-Case Maximum (Max)</b>		75 °C
Input Voltage	220 to 240 V			
Line Frequency	50 to 60 Hz	<b>Mechanical and Housing</b>		
Input Frequency	50 to 60 Hz	<b>Housing</b>		L 280x39x28
Earth Leakage Current (Max)	0.5 mA			
Inrush Current Width	0.35 ms	<b>Approval and Application</b>		
Inrush Current Peak (Max)	18 A	<b>Ingress protection code</b>		IP20 [Finger-protected]
Number of Products on MCB (16A Type B) (Nom)	28	<b>Energy Efficiency Index</b>		A2/A2 BAT
		<b>Approval Marks</b>		F-Marking CE marking ENEC certificate CCC certificate C-Tick certificate PSB certification TISI marking SIRIM approval CB Certificate CCC certificate VDE-EMV certificate
<b>Wiring</b>				
Connector Type Input Terminals	WAGO 744 connector	<b>Product Data</b>		
Connector Type Output Terminals	WAGO 744 connector [Suitable for manual wiring]	<b>Order product name</b>		HF-S 3/4 18 TL-D II 220-240V 50/60Hz
		<b>Full product name</b>		HF-S 3/418 TL-D II 220-240V 50/60Hz
		<b>Full product code</b>		87279009055700
		<b>Order code</b>		90555700
<b>Temperature</b>				
Ambient temperature range	-20 °C to 50 °C			
T-Case Lifetime (Nom)	75 °C			

HF-Selectalume II for TL-D lamps

Material Nr. (12NC)	913713032666
Numerator - Quantity Per Pack	1
EAN/UPC - Product/Case	8711500999320
Numerator - Packs per outer box	10

EAN/UPC - Case	8727900905557
----------------	---------------

Dimensional drawing



Product
HF-S 3/4 18 TL-D II 220-240V 50/60Hz

Product	A1	B1	C1	A2	B2	D1
HF-S 3/4 18 TL-D II 220-240V 50/60Hz	280 mm	39 mm	28 mm	265 mm		4.2 mm

