



HF-Selectalume II for PL-T/C Strain Relief

HF-S 118 PL-T/C II SR 220-240V 50/60Hz

HF-Selectalume II independent version is the most cost-effective, reliable, slim and affordable fluorescent solution, with highly disruptive technology for energy saving, system flexibility and unsurpassed performance. The cost-saving HF-Selectalume II PLTC SR has a robust design which meets all relevant international safety and performance standards. The HF-S II strain relief is optimized mainly for PL-T/C lamps. HF-Selectalume II is intended for use with indoor lighting fixtures such as spotlights, downlights and recessed luminaires, which are largely used in office, retail, industry, hotel, restaurant and other applications. The ballast is primarily designed for Indoor application. For outdoor application, the luminaire should be minimum Classland need to be sufficiently protected against water & dust. The installation should also be guard against any lightening surge or any other necessary electrical protection as deemed in such typical installation & application.

Product data

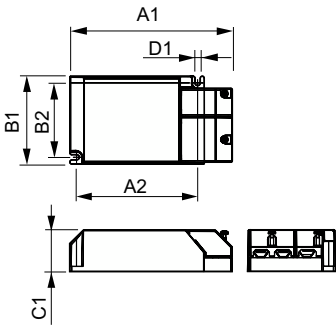
Operating and Electrical		Connector Type Output Terminals	
Input Voltage	220 to 240 V	WAGO 250 connector [Suitable for manual wiring]	
Line Frequency	50 to 60 Hz		
Input Frequency	50 to 60 Hz	Temperature	
Earth Leakage Current (Max)	0.7 mA	Ambient temperature range	-10 °C to 50 °C
Inrush Current Width	0.25 ms	T-Case Lifetime (Nom)	70 °C
Inrush Current Peak (Max)	12.1 A	T-Case Maximum (Max)	70 °C
Number of Products on MCB (16A Type B) (Nom)	35	Mechanical and Housing	
Wiring		Housing	L 125.5x67.8x32.0
Connector Type Input Terminals	WAGO 250 connector [Suitable for manual wiring]	Approval and Application	
		Ingress protection code	IP20 [Finger-protected]

HF-Selectalume II for PL-T/C Strain Relief

Energy Efficiency Index	A2
Approval Marks	PSG CE marking CCC certificate C-Tick certificate SIRIM approval KEMA Keur certificate CCC certificate
Product Data	
Order product name	HF-S 118 PL-T/C II SR 220-240V 50/60Hz
Full product name	HF-S 118 PL-T/C II SR 220-240V 50/60Hz
Full product code	871829116965900

Order code	913713035966
Material Nr. (12NC)	913713035966
Numerator - Quantity Per Pack	1
EAN/UPC - Product/Case	8718291169659
Numerator - Packs per outer box	12
EAN/UPC - Case	8718291169666

Dimensional drawing



Product	D1	C1	A1	A2	B1	B2
HF-S 118 PL-T/C II SR 220-240V 50/60Hz	4.0 mm	32.0 mm	125.5 mm	93.5 mm	67.8 mm	57.5 mm

