



HF-Essential II for TL5/TL-D

HF-E 121 TL5 II 220-240V 50/60Hz

Essentially smart and reliable. HF-Essential II is the most cost-effective solution for reliably operation of a fluorescent lamp. It is also the ideal entry-level product for electromagnetic system users who want to take advantage of the benefits provided by electronic ballasts. The cost-saving and reliable HF-Essential II is energy efficiency class A2, and its robust design meets all relevant international safety and performance standards. HF- Essential II is the ideal choice for a broad range of new construction and retrofit applications within the commercial sector, including general surface mounting and office lighting, parking garages, warehouses and other applications.

Product data

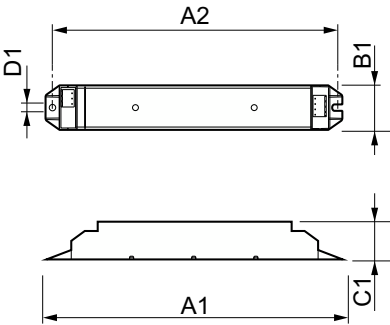
Operating and Electrical		T-Case Lifetime (Nom)	
Input Voltage	220 to 240 V	75 °C	
Line Frequency	50 to 60 Hz	T-Case Maximum (Max)	
Input Frequency	50 to 60 Hz	75 °C	
Earth Leakage Current (Max)	0.5 mA	Mechanical and Housing	
Inrush Current Width	0.132 ms	Housing	
Inrush Current Peak (Max)	12.5 A	L 280x29.3x22.7	
Number of Products on MCB (16A Type B) (Nom)	60	Approval and Application	
Wiring		Ingress protection code	
Connector Type Input Terminals	Insert	IP20 [Finger-protected]	
Connector Type Output Terminals	Insert	Energy Efficiency Index	
Temperature		A2	
Ambient temperature range	0 °C to 50 °C	Approval Marks	
		CE marking KEMA Keur certificate RoHS Compliant	
Product Data		Order product name	
		HF-E 121 TL5 II 220-240V 50/60Hz	
		Full product name	
		HF-E 121 TL5 II 220-240V 50/60Hz	
		Full product code	
		871869641701000	

HF-Essential II for TL5/TL-D

Order code	41701000
Material Nr. (12NC)	913713041666
Numerator - Quantity Per Pack	1
EAN/UPC - Product/Case	8718696417010

Numerator - Packs per outer box	50
EAN/UPC - Case	8718696417027

Dimensional drawing



Product	D1	C1	A1	A2	B1
HF-E 121 TL5 II 220-240V 50/60Hz	1.2 mm	22.7 mm	280.0 mm	270.0 mm	29.3 mm

