



# HF-Selectalume II for TL5 lamps

## HF-S 2 14-35 TL5 HE II 220-240V

HF-Selectalume II TL5 is the most cost-effective, reliable and outstanding solution for fluorescent lamps. These ballasts are part of an overall high-efficiency lighting system that may help you or your customers to achieve any international or local energy code you need to comply with. HF-Selectalume II TL5 ballasts are the ideal choice for a broad range of new construction and retrofit applications within the commercial sector, including general surface mounting or office lighting, parking garages, warehouses, waterproof and other applications. The ballast is primarily designed for Indoor application. For outdoor application, the luminaire should be minimum Classland need to be sufficiently protected against water & dust. The installation should also be guard against any lightening surge or any other necessary electrical protection as deemed in such typical installation & application.

### Product data

<b>Operating and Electrical</b>		<b>Connector Type Output Terminals</b>		WAGO 744 connector [Suitable for manual wiring]
Input Voltage	220 to 240 V			
Line Frequency	50 to 60 Hz			
Input Frequency	50 to 60 Hz	<b>Temperature</b>		
Earth Leakage Current (Max)	0.5 mA	Ambient temperature range	-20 °C to 55 °C	
Inrush Current Width	0.25 ms	T-Case Lifetime (Nom)	75 °C	
Inrush Current Peak (Max)	24 A	T-Case Maximum (Max)	75 °C	
Number of Products on MCB (16A Type B) (Nom)	28	<b>Mechanical and Housing</b>		
		Housing	L360x30x22	
<b>Wiring</b>		<b>Approval and Application</b>		
Connector Type Input Terminals	WAGO 744 connector	Ingress protection code	IP20 [Finger-protected]	
		Energy Efficiency Index	A2 BAT	

# HF-Selectalume II for TL5 lamps

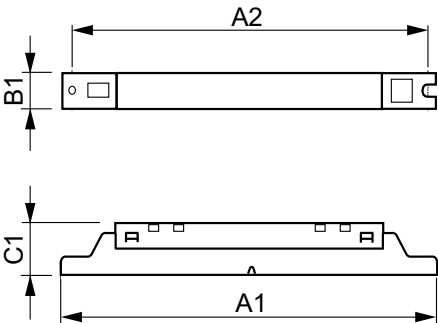
Approval Marks	CE marking ENEC certificate CCC certificate
	C-Tick certificate TISI marking SIRIM approval
	CCC certificate

## Product Data

Order product name	HF-S 2 14-35 TL5 HE II 220-240V
Full product name	HF-S 2 14-35 TL5 HE II 220-240V
Full product code	871829175844000

Order code	913713042166
Material Nr. (12NC)	913713042166
Numerator - Quantity Per Pack	1
EAN/UPC - Product/Case	8718291758440
Numerator - Packs per outer box	12
EAN/UPC - Case	8718291758457

## Dimensional drawing



Product	D1	C1	A1	A2	B1
HF-S 2 14-35 TL5 HE II 220-240V	4.2 mm	22.0 mm	360.0 mm	350.0 mm	30.0 mm

