



Double Ended Linear

Double Ended Linear 500T3Q/P/CL 125-130V 12PK

High-quality white light with superior lumen performance. Halogen Double Ended lamps provide bright, white light for work lights and security lighting. Rugged construction for busy work sites. Offered in several lengths to meet most application needs. High lumen output provides light where you need it.

Product data

General Information	
Cap-Base	R7S [R7s]
Operating Position	UNIVERSAL [Any or Universal (U)]
Nominal lifetime	2,000 hour(s)
Rated Lifetime (Hours)	2,000 hour(s)
Lighting Technology	Halogen

Light Technical	
Luminous Flux	9,200 lm
Correlated Color Temperature (Nom)	2900 K
Luminous Efficacy (rated) (Nom)	18.4 lm/W
Color rendering index (CRI)	100

Operating and Electrical	
Power Consumption	500 W
Lamp Current (Nom)	3.94 A
Starting Time (Nom)	0.0 s
Voltage (Nom)	127 V
Voltage (Nom)	127 V

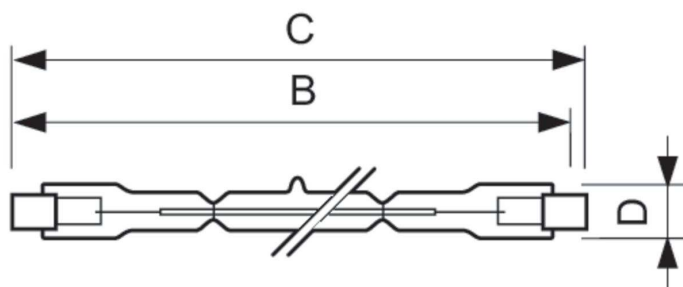
Controls and Dimming	
Dimmable	Yes

Mechanical and Housing	
Bulb Finish	Clear
Bulb Shape	T3 [T 12mm (T3)]

Product Data	
Order product name	500T3Q/P/CL 125-130V 12PK
Full product name	Double Ended Linear 500T3Q/P/CL 125-130V 12PK
Order code	132233
Material Nr. (12NC)	924735535893
Numerator - Quantity Per Pack	1
EAN/UPC - Product/Case	046677132231
Numerator - Packs per outer box	12
EAN/UPC - Case	50046677132236

Double Ended Linear

Dimensional drawing



Product	D (max)	B (max)	B	B (min)	C (max)
500T3Q/P/CL 125-130V 12PK	12 mm	115.8 mm	114.2 mm	112.6 mm	117.6 mm

