



MHN-TD

MHN-TD 70W/842 Rx7s 1CT/12

Double-ended quartz Metal-halide lamp

Warnings and Safety

- Use only in totally enclosed luminaire, even during testing (IEC61167, IEC 62035, IEC60598)
- The luminaire must be able to contain hot lamp parts if the lamp ruptures
- Control gear must include end-of-life protection (IEC61167, IEC 62035)
- A lamp breaking is extremely unlikely to have any impact on your health. If a lamp breaks, ventilate the room for 30 minutes and remove the parts, preferably with gloves. Put them in a sealed plastic bag and take it to your local waste facilities for recycling. Do not use a vacuum cleaner.

Product data

| General Information | |
|----------------------------|------------------------------------------|
| Cap-Base | RX7S [RX7s] |
| Operating Position | P45 [Parallel +/-45D or Horizontal(HOR)] |
| Life to 50% Failures (Nom) | 10.500 hour(s) |

| Light Technical | |
|------------------------------------|--------------------|
| Color Code | 842 [CCT of 4200K] |
| Color Designation | Cool White (CW) |
| Chromaticity Coordinate X (Nom) | 370 |
| Chromaticity Coordinate Y (Nom) | 370 |
| Correlated Color Temperature (Nom) | 4200 K |
| Luminous Efficacy (Rated) (Min) | 67 lm/W |
| Luminous Efficacy (rated) (Nom) | 75 lm/W |
| Color rendering index (CRI) | 80 |
| Arc Length O (Nom) | 7.7 mm |

| Operating and Electrical | |
|--------------------------|------|
| Power Consumption | 77 W |

| | |
|---------------|------|
| Voltage (Nom) | 90 V |
| Voltage (Nom) | 90 V |

| Controls and Dimming | |
|----------------------|----|
| Dimmable | No |

| Mechanical and Housing | |
|------------------------|-------|
| Bulb Finish | Clear |
| Bulb Shape | TD |

| Approval and Application | |
|-------------------------------|--------|
| Mercury (Hg) Content (Nom) | 11 mg |
| Energy Consumption kWh/1000 h | 85 kWh |

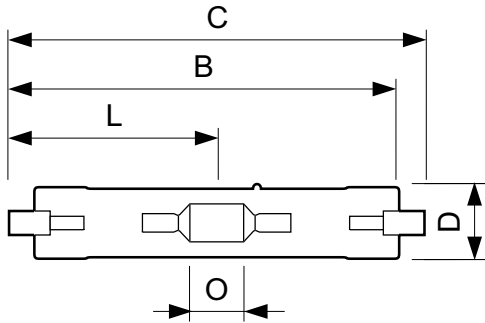
| Product Data | |
|--------------------|----------------------------|
| Order product name | MHN-TD 70W/842 Rx7s 1CT/12 |
| Full product name | MHN-TD 70W/842 Rx7s 1CT/12 |
| Full product code | 871150021104000 |

MHN-TD

| | |
|-------------------------------|---------------|
| Order code | 928070205193 |
| Material Nr. (12NC) | 928070205193 |
| Numerator - Quantity Per Pack | 1 |
| EAN/UPC - Product/Case | 8711500211040 |

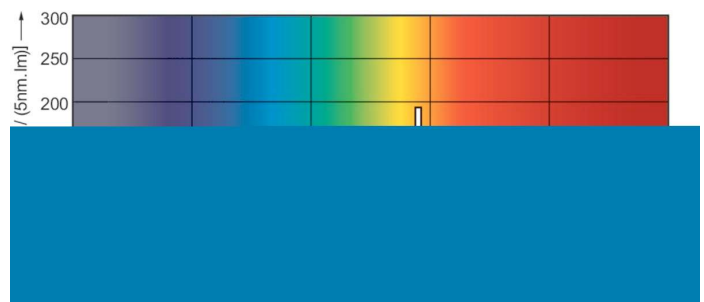
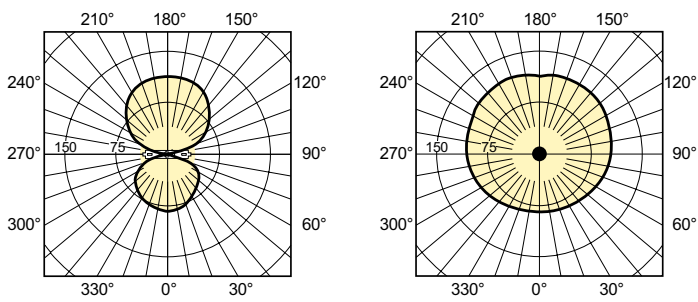
| | |
|---------------------------------|---------------|
| Numerator - Packs per outer box | 12 |
| EAN/UPC - Case | 8711500211057 |

Dimensional drawing



| Product | D (max) | D | O | C (max) |
|----------------------------|---------|-----------|--------|----------|
| MHN-TD 70W/842 Rx7s 1CT/12 | 19.5 mm | 0.75 inch | 7.7 mm | 117.6 mm |

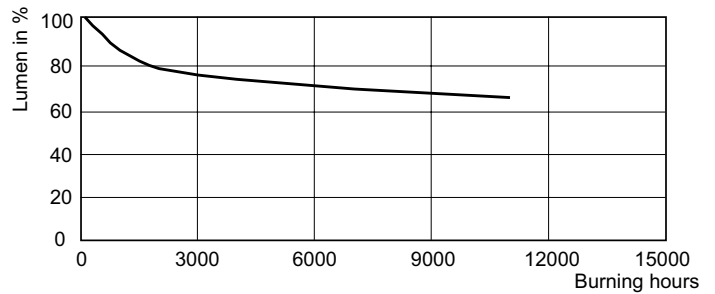
Photometric data



Light Distribution Diagram - MHN-TD 70W/842 Rx7s 1CT/12

Spectral Power Distribution Colour - MHN-TD 70W/842 Rx7s 1CT/12

Lifetime



Life Expectancy Diagram - MHN-TD 70W/842 Rx7s 1CT/12

Lumen Maintenance Diagram - MHN-TD 70W/842 Rx7s 1CT/12

