



MASTER MHN-FC

MASTER MHN-FC 2000W/740 400V XW

Compact quartz metal halide lamps with double pinch

Warnings and Safety

- Use only in totally enclosed luminaire, even during testing (IEC61167, IEC 62035, IEC60598)
- Use only in totally enclosed luminaire, even during testing (IEC61167, IEC 62035, IEC60598)
- The luminaire must be able to contain hot lamp parts if the lamp ruptures
- The luminaire must be able to contain hot lamp parts if the lamp ruptures
- A lamp breaking is extremely unlikely to have any impact on your health. If a lamp breaks, ventilate the room for 30 minutes and remove the parts, preferably with gloves. Put them in a sealed plastic bag and take it to your local waste facilities for recycling. Do not use a vacuum cleaner.
- A lamp breaking is extremely unlikely to have any impact on your health. If a lamp breaks, ventilate the room for 30 minutes and remove the parts, preferably with gloves. Put them in a sealed plastic bag and take it to your local waste facilities for recycling. Do not use a vacuum cleaner.

Product data

General Information	
Cap-Base	DOUBLEENDED [Double Ended]
Operating Position	P5 [Parallel +/-5D or Horizontal(HOR)]
Life to 50% Failures (Nom)	12,000 hour(s)
Light Technical	
Color Code	740 [CCT of 4000K]
Color Designation	White (WH)
Chromaticity Coordinate X (Nom)	380
Chromaticity Coordinate Y (Nom)	419
Correlated Color Temperature (Nom)	4200 K
Luminous Efficacy (rated) (Nom)	102 lm/W
Color rendering index (CRI)	60

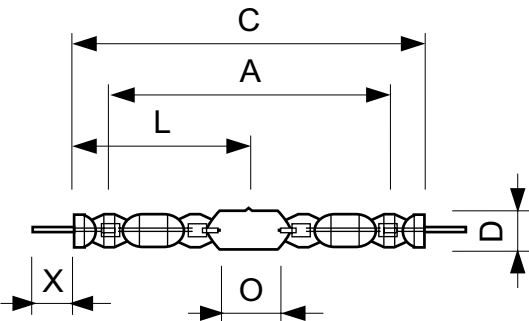
Arc Length O (Nom)	108 mm
Operating and Electrical	
Power Consumption	2,032.0 W
Voltage (Nom)	222 V
Voltage (Nom)	222 V
Controls and Dimming	
Dimmable	No
Mechanical and Housing	
Bulb Finish	Clear

MASTER MHN-FC

Approval and Application	
Mercury (Hg) Content (Nom)	105 mg
Energy Consumption kWh/1000 h	2235 kWh
Product Data	
Order product name	MASTER MHN-FC 2000W/740 400V XW
Full product name	MASTER MHN-FC 2000W/740 400V XW
Full product code	871150021349500

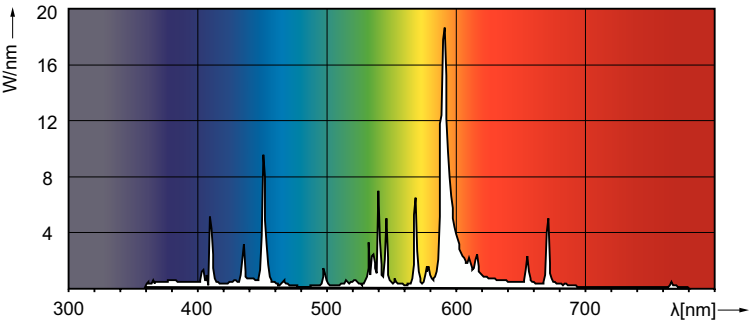
Order code	928070405130
Material Nr. (12NC)	928070405130
Numerator - Quantity Per Pack	1
EAN/UPC - Product/Case	8718291548195
Numerator - Packs per outer box	1
EAN/UPC - Case	8711500213495

Dimensional drawing



Product	D (max)	D	O	X	L	A	C (max)
MASTER MHN-FC 2000W/740 400V XW	33 mm	25.5 mm	108 mm	58 mm	177 mm	290 mm	357 mm

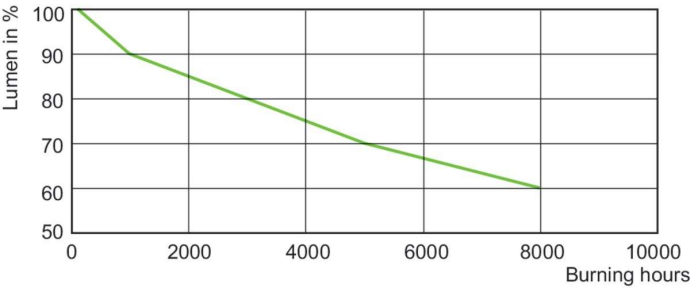
Photometric data



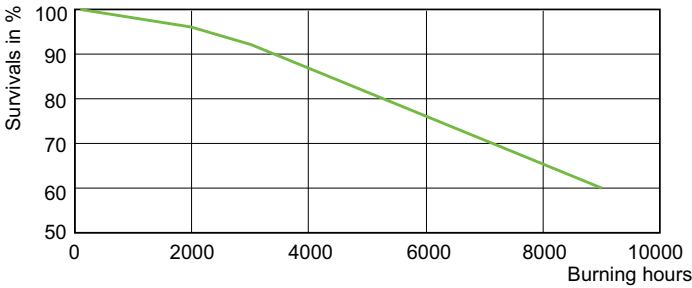
Spectral Power Distribution Colour - MASTER MHN-FC 2000W/740 400V XW

MASTER MHN-FC

Lifetime



Lumen Maintenance Diagram - MASTER MHN-FC 2000W/740 400V XW



Life Expectancy Diagram - MASTER MHN-FC 2000W/740 400V XW

