

Other digital cinema projectors

XDC 4500 TA

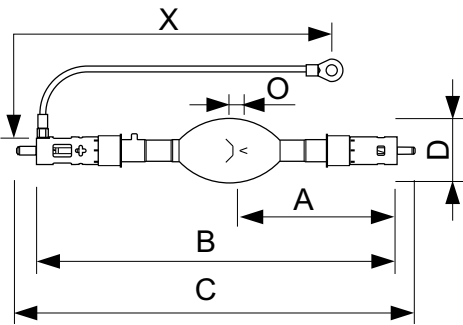
Digital Xenon Cinema TA-type lamps are ideal for today's demanding 3D and 2D digital cinema presentations. There is a choice of four power ratings in the TA-type Digital Cinema Xenon lamps range: 3000W, 4500W, 6000W or 6500W. These lamps produce the very high light output needed to maximize screen brightness and enhance the dramatic effect for the viewer. These long-life digital lamps also provide constant color temperature characteristics, and meet all of the stringent arc-stability requirements for consistent customer satisfaction. In addition to TA-type Digital Cinema Xenon lamps there are B-, C-, N-, and S-type Digital Cinema Xenon lamps. These are all individually customized per projector, so there is a different, perfect-fitting lamp for each projector model to ensure optimized projector performance.

Product data

General Information		Order product name	XDC 4500 TA
Operating Position	P15 [Parallel +/-15D or Horizontal(HOR)]	Order code	928415906301
Nominal lifetime	1,000 hour(s)	Numerator - Quantity Per Pack	1
Operating and Electrical		Numerator - Packs per outer box	1
Power Consumption	4,500 W	Material Nr. (12NC)	928415906301
Lamp Current (Nom)	145 A	Full product name	XDC 4500 TA
Voltage (Nom)	30 V	EAN/UPC - Case	8718291120483
Voltage (Nom)	30 V	EAN/UPC - Product/Case	8718291120483
Product Data			
Full product code	871829112048300		

Other digital cinema projectors

Dimensional drawing



Product	O	D	X	B (max)	C (max)	A
XDC 4500 TA	6.0 mm	60 mm	400 mm	370 mm	410 mm	171.5 mm

