



MASTER LEDtube EM/ Mains T8

MASTER LEDtube STD 1200mm 20W865 T8 I

The Philips MASTER LEDtube integrates a LED light source into a traditional fluorescent form factor. Its unique design creates a perfectly uniform visual appearance which cannot be distinguished from traditional fluorescent. For those that are looking for value for money within limited budget and re-lamping efforts for better light effect and lifetime.

Warnings and Safety

• –

Product data

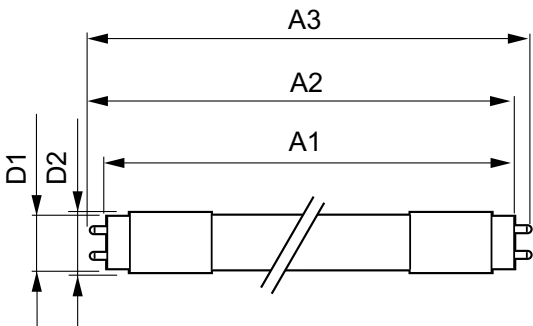
General Information		Operating and Electrical	
Cap-Base	G13 [Medium Bi-Pin Fluorescent]	Line Frequency	50 to 60 Hz
Nominal lifetime	40,000 hour(s)	Input Frequency	50 to 60 Hz
Switching Cycle	50,000	Power Consumption	20 W
Lighting Technology	LED	Starting Time (Nom)	0.5 s
EU RoHS compliant	Yes	Warm-up time to 60% light	Instant full light s
Light Technical		Power Factor (Fraction)	0.9
Color Code	865 [CCT of 6500K]	Voltage (Nom)	100-240 V
Beam Angle (Nom)	150 degree(s)	Temperature	
Luminous Flux	2,100 lm	Ambient temperature range	-20 °C to 45 °C
Correlated Color Temperature (Nom)	6500 K	T-Case Maximum (Nom)	55 °C
Color Consistency	<6	Controls and Dimming	
Color rendering index (CRI)	83	Dimmable	No
LLMF At End Of Nominal Lifetime (Nom)	70 %		

MASTER LEDtube EM/Mains T8

Mechanical and Housing	
Product Length	1,200 mm
Approval and Application	
Energy Saving Product	Yes
Suitable For Accent Lighting	No
Approval Marks	CE marking RoHS compliance KEMA Keur certificate
Energy Consumption kWh/1000 h	20 kWh
Product Data	
Order product name	MAS LEDtube STD 1200mm 20W865 T8 I

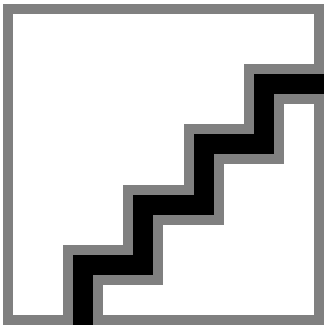
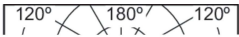
Full product name	MASTER LEDtube STD 1200mm 20W865 T8 I
Full product code	871829173484000
Order code	73484000
Material Nr. (12NC)	929000286508
Numerator - Quantity Per Pack	1
EAN/UPC - Product/Case	8718291734840
Numerator - Packs per outer box	10
EAN/UPC - Case	8718291734857

Dimensional drawing



Product	D1	D2	A1	A2	A3
MAS LEDtube STD 1200mm 20W865 T8 I	25.68 mm	28 mm	1,198.0 mm	1,205.0 mm	1,212.0 mm

Photometric data



Light Distribution Diagram - MAS LEDtube STD 1200mm 20W865 T8 I

Spectral Power Distribution Colour - MAS LEDtube STD 1200mm 20W865 T8 I

MASTER LEDtube EM/Mains T8

