

LED Constant Voltage Drivers IEC

LED Power Driver 20W 24V

Constant Voltage LED drivers ensure highly stable output voltage and are SELV (Safety Extra Low Voltage) compliant. These drivers are the perfect choice for enabling easy modular connection of multiple LED modules at a safe voltage. The Constant Voltage category is simple to install and assured for minimal maintenance thanks to its reliable, industry-leading lifetime and 5-year Philips warranty. Additionally, its robust design reduces maintenance and lowers the cost of ownership over the application lifetime – ideal for OEMs that produce cost-effective solutions for retail and refrigerated-display lighting.

Product data

General Information	
Lighting Technology	LED
Operating and Electrical	
Line Frequency	50 to 60 Hz
Input Frequency	50 to 60 Hz
Total Harmonic Distortion IEC (Max)	20 %
Power Consumption	25 W
Maximum Efficiency at Full Load	80 %
Output Current (Nom)	850 mA
Output Voltage Tolerance (Max)	5 %
Input Current (Max)	- mA
Inrush Current Peak (Max)	60 A
Wiring	
Connector Type Input Terminals	Wago 250
Output Wire Length	300 mm

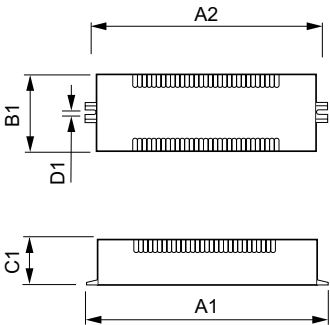
Input Wire Cross Section (Nom)	0.82 mm²
Temperature	
Ambient temperature range	-30 °C to 60 °C
T-Case Lifetime (Nom)	70 °C
T-Case Maximum (Max)	80 °C
Controls and Dimming	
Control Interface	None
Mechanical and Housing	
Housing Color	White
Approval and Application	
Isolation Classification	Class II
Approval Marks	CE marking

LED Constant Voltage Drivers IEC

Product Data	
Order product name	LED Power Driver 20W 24V
Full product name	LED Power Driver 20W 24V
Full product code	871829121524000
Order code	929000654006
Material Nr. (12NC)	929000654006

Numerator - Quantity Per Pack	1
EAN/UPC - Product/Case	8718291215240
Numerator - Packs per outer box	10
EAN/UPC - Case	8718291215257

Dimensional drawing



Product	D1	A2	C1	A1	B1
LED Power Driver 20W 24V	4.4 mm	140 mm	27.0 mm	150.0 mm	37 mm

