



Xitanium/Fortimo LED Drivers Indoor

Xitanium 40W 0.28A 142V 230V

The new Fortimo and Xitanium electronic LED drivers are specially designed to operate LED solutions for general lighting applications. There are Xitanium LED driver versions in 17W / 24V, 25W / 36V and 45W / 80V. There are fixed-output and dimmable (trailing edge and Touch & DALI) versions.. The high output voltage (up to 80V) and adjustable output current (200 to 700mA) enable operation of many LEDs (high light output) and flexibility in LED fixture design. The output current can be set by placing a resistor on your LED PCB (Level 2 board). The new housing design incorporates three different mounting options: independent, screw and click mounting. The 25W and 45W versions also feature a 12V output to operate active cooling or decorative LED light effects. The Xitanium LED driver 45W/80V is available in fixed-output version in an independent housing.

Product data

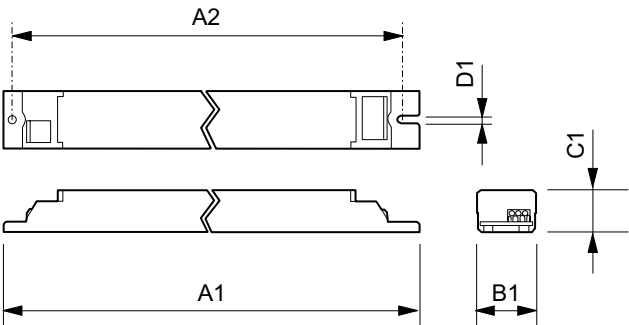
General Information	
Lighting Technology	LED
Operating and Electrical	
Line Frequency	50 to 60 Hz
Input Frequency	50 to 60 Hz
Mains voltage operation (DC)	168-275 V
Total Harmonic Distortion IEC (Max)	30 %
Power Consumption	47 W
12V Output	No
Output Current Ripple (Max)	20 %
Maximum Efficiency at Full Load	88 %
Output Current (Max)	280 mA
Output Current (Nom)	280 mA

Output Current Tolerance (Max)	5 %
Output Current Tolerance (Min)	-8 %
Earth Leakage Current (Max)	0.7 mA
Open Circuit Voltage (DC) (Max)	300 V
Input Current (Nom)	250 mA
Input current (DC)	0.3 A
Inrush Current Peak (Max)	22 A
Output Power (Max)	40 W
Output Power (Nom)	32.5 W
Default output current	280 mA
Inrush Current Width to 50% of Peak	250 µs
Energy Metering	No
Constant Current (CC)	True
Constant Voltage (CV)	False

Xitanium/Fortimo LED Drivers Indoor

Diagnostics	False
Number of Products on MCB (16A Type B) (Max)	24
Wiring	
Connector Type Input Terminals	Wago 744
Hot Wiring	No
Connector Type Output Terminals	Wago 744
Output Wire Cross Section (Max)	1.5 mm²
Output Wire Cross Section (Min)	0.5 mm²
Cable Length From Device to Lamp	0.24 m
Input wire strip length	8 mm to 9 mm
Input Wire Cross Section (Max)	1.5 mm²
Input Wire Cross Section (Min)	0.5 mm²
Output wire strip length	8 mm to 9 mm
Temperature	
Ambient temperature range	-20 °C to 50 °C
T-Case Lifetime (Nom)	75 °C
T-Case Maximum (Max)	75 °C
Maximum case temperature (in case of failure)	110 °C
Controls and Dimming	
Dimmable	No
Control Interface	None
Mechanical and Housing	
Housing	L280x30x22

Dimensional drawing



Approval and Application	
Ingress protection code	IP20 [Finger-protected]
Surge Protection (Common/Differential)	EN61547 (L-L 1kV, L-G 2kV) kV
Relative Humidity (Operation) (Max)	90 %
Relative humidity (storage)	10-95 %
Isolation Classification	Class I
Short Circuit Protection	Protected
Over Power Protection	Protected
Open Circuit Protection	Protected
Approval Marks	CE marking ENEC certificate CCC certificate
Corridor Mode	False
Output Current Set Options	No
Product Data	
Order product name	Xitanium 40W 0.28A 142V 230V
Full product name	Xitanium 40W 0.28A 142V 230V
Full product code	871829121318500
Order code	21318500
Material Nr. (12NC)	929000805103
Numerator - Quantity Per Pack	1
EAN/UPC - Product/Case	8718291213185
Numerator - Packs per outer box	12
EAN/UPC - Case	8718291213192

Product	D1	A2	C1	A1	B1
Xitanium 40W 0.28A 142V 230V	4.1 mm	265.0 mm	22.0 mm	280.0 mm	30.0 mm

Xitanium/Fortimo LED Drivers Indoor

