



LED InstantFit Lamps

8.5T8/24-5000 IF 10/1

Philips InstantFit LED Lamp, 2 ft. (8.5W / 1100 lm / 5000K)

Philips LED T8 InstantFit Lamps are an ideal energy saving choice for existing linear fluorescent fixtures.

Warnings and Safety

- Perform a visual inspection to ensure lamp holders (or sockets) are not damaged or loose. If the lamp holders (or sockets) are damaged, corroded, charred, blackened or loose, contact a qualified electrician for proper replacement.
- Please refer to the ballast compatibility guide located at www.philips.com/instantfit.

Product data

General Information		Input Frequency	
Cap-Base	G13 [Medium Bi-Pin Fluorescent]	Power Consumption	8.5 W
Nominal lifetime	40,000 hour(s)	Starting Time (Nom)	0.5 s
Switching Cycle	50,000	Warm-up time to 60% light	Instant full light s
Lighting Technology	LED	Power Factor (Fraction)	0.9
EU RoHS compliant	Yes	Voltage (Nom)	120-277 V
Light Technical		Temperature	
Color Code	850 [CCT of 5000K]	Ambient temperature range	-4 °F to 113 °F
Beam Angle (Nom)	160 degree(s)	T-Case Maximum (Nom)	122 °F
Luminous Flux	1,100 lm	Controls and Dimming	
Correlated Color Temperature (Nom)	5000 K	Dimmable	No
Color Consistency	<6	Mechanical and Housing	
Color rendering index (CRI)	83	Product Length	600 mm
LLMF At End Of Nominal Lifetime (Nom)	70 %		
Operating and Electrical			
Line Frequency	50 to 60 Hz		

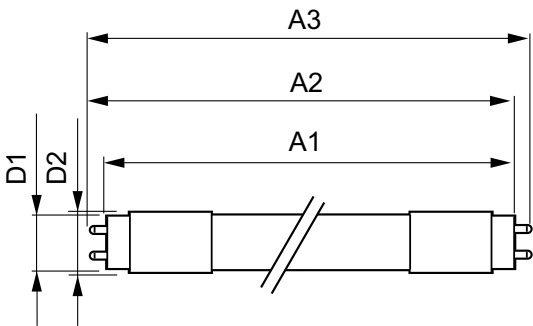
LED InstantFit Lamps

Approval and Application	
Energy Saving Product	Yes
Suitable For Accent Lighting	No
Approval Marks	CE marking UL certificate RoHS compliance KEMA Keur certificate
Energy Consumption kWh/1000 h	10.5 kWh

Product Data	
Order product name	8.5T8/24-5000 IF 10/1

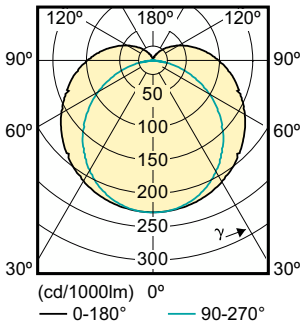
Full product name	8.5T8/24-5000 IF 10/1
Order code	452045
Material Nr. (12NC)	929001118204
Numerator - Quantity Per Pack	1
EAN/UPC - Product/Case	046677452049
Numerator - Packs per outer box	10
EAN/UPC - Case	50046677452044

Dimensional drawing

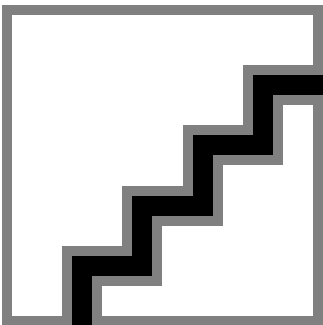


Product	D1	D2	A1	A2	A3
8.5T8/24-5000 IF 10/1	1-1/16 inch	1-1/8 inch	23-3/16 inch	23-1/2 inch	23-3/4 inch

Photometric data



Light Distribution Diagram - 8.5T8/24-5000 IF 10/1



Spectral Power Distribution Colour - 8.5T8/24-5000 IF 10/1

