



LED InstantFit Lamps

10.5T8/36-3000 IF 10/1

Philips InstantFit LED Lamp, 3 ft (10.5W / 1100 lm / 3000K)

Philips LED T8 InstantFit Lamps are an ideal energy saving choice for existing linear fluorescent fixtures.

Warnings and Safety

- Perform a visual inspection to ensure lamp holders (or sockets) are not damaged or loose. If the lamp holders (or sockets) are damaged, corroded, charred, blackened or loose, contact a qualified electrician for proper replacement.
- Please refer to the ballast compatibility guide located at www.philips.com/instantfit.

Product data

General Information	
Cap-Base	G13 [Medium Bi-Pin Fluorescent]
Nominal lifetime	40,000 hour(s)
Switching Cycle	50,000
Lighting Technology	LED
EU RoHS compliant	Yes

Light Technical	
Color Code	830 [CCT of 3000K]
Beam Angle (Nom)	160 degree(s)
Luminous Flux	1,100 lm
Correlated Color Temperature (Nom)	3000 K
Color Consistency	<6
Color rendering index (CRI)	83
LLMF At End Of Nominal Lifetime (Nom)	70 %

Operating and Electrical	
Line Frequency	50 to 60 Hz

Input Frequency	50 to 60 Hz
Power Consumption	10.5 W
Starting Time (Nom)	0.5 s
Warm-up time to 60% light	Instant full light s
Power Factor (Fraction)	0.9
Voltage (Nom)	120-277 V

Temperature	
Ambient temperature range	-4 °F to 113 °F
T-Case Maximum (Nom)	122 °F

Controls and Dimming	
Dimmable	No

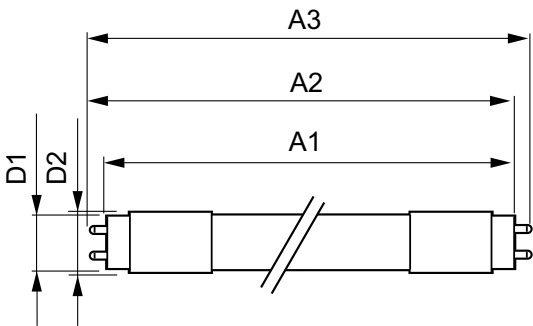
Mechanical and Housing	
Product Length	900 mm

LED InstantFit Lamps

Approval and Application	
Energy Saving Product	Yes
Suitable For Accent Lighting	No
Approval Marks	CE marking UL certificate RoHS compliance KEMA Keur certificate
Energy Consumption kWh/1000 h	13.5 kWh
Product Data	
Order product name	10.5T8/36-3000 IF 10/1

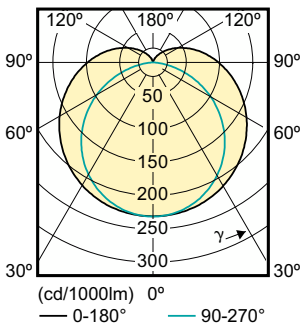
Full product name	10.5T8/36-3000 IF 10/1
Order code	452052
Material Nr. (12NC)	929001118304
Numerator - Quantity Per Pack	1
EAN/UPC - Product/Case	046677452056
Numerator - Packs per outer box	10
EAN/UPC - Case	50046677452051

Dimensional drawing



Product	D1	D2	A1	A2	A3
10.5T8/36-3000 IF 10/1	1-1/16 inch	1-1/8 inch	35-3/16 inch	35-1/2 inch	35-3/4 inch

Photometric data



Light Distribution Diagram - 10.5T8/36-3000 IF 10/1



Spectral Power Distribution Colour - 10.5T8/36-3000 IF 10/1

