



# MASTER LEDtube EM/ Mains T8

## MAS LEDtube STD 1200mm 14.5W840 T8 I

The Philips MASTER LEDtube integrates a LED light source into a traditional fluorescent form factor. Its unique design creates a perfectly uniform visual appearance which cannot be distinguished from traditional fluorescent. For those that are looking for value for money within limited budget and re-lamping efforts for better light effect and lifetime.

### Warnings and Safety

• -

### Product data

| General Information                   |                                 |
|---------------------------------------|---------------------------------|
| Cap-Base                              | G13 [Medium Bi-Pin Fluorescent] |
| Nominal lifetime                      | 40,000 hour(s)                  |
| Switching Cycle                       | 50,000                          |
| Lighting Technology                   | LED                             |
| EU RoHS compliant                     | Yes                             |
| Light Technical                       |                                 |
| Color Code                            | 840 [CCT of 4000K]              |
| Beam Angle (Nom)                      | 150 degree(s)                   |
| Luminous Flux                         | 1,600 lm                        |
| Correlated Color Temperature (Nom)    | 4000 K                          |
| Color Consistency                     | <6                              |
| Color rendering index (CRI)           | 83                              |
| LLMF At End Of Nominal Lifetime (Nom) | 70 %                            |

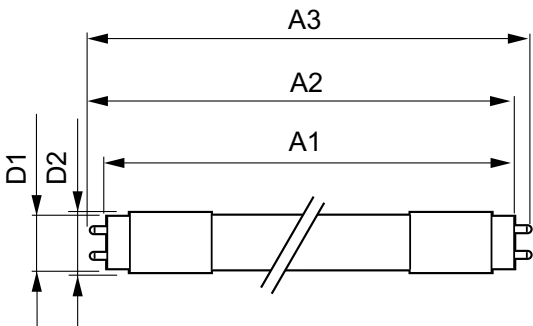
| Operating and Electrical  |                      |
|---------------------------|----------------------|
| Line Frequency            | 50 to 60 Hz          |
| Input Frequency           | 50 to 60 Hz          |
| Power Consumption         | 14.5 W               |
| Starting Time (Nom)       | 0.5 s                |
| Warm-up time to 60% light | Instant full light s |
| Power Factor (Fraction)   | 0.9                  |
| Voltage (Nom)             | 220-240 V            |
| Temperature               |                      |
| Ambient temperature range | -20 °C to 45 °C      |
| T-Case Maximum (Nom)      | 45 °C                |
| Controls and Dimming      |                      |
| Dimmable                  | No                   |

MASTER LEDtube EM/Mains T8

|                               |  |
|-------------------------------|--|
| Mechanical and Housing        |  |
| Product Length                | 47-1/4 inch                                      |
| Approval and Application      |  |
| Energy Saving Product         | Yes  |
| Suitable For Accent Lighting  | No   |
| Approval Marks                | CE marking RoHS compliance KEMA Keur certificate |
| Energy Consumption kWh/1000 h | 14.5 kWh   |
| Product Data                  |  |
| Order product name            | MAS LEDtube STD 1200mm 14.5W840 T8 I             |

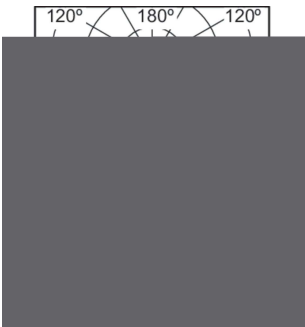
|                                 |                                      |
|---------------------------------|--------------------------------------|
| Full product name               | MAS LEDtube STD 1200mm 14.5W840 T8 I |
| Full product code               | 871829179312000                      |
| Order code                      | 929001119008                         |
| Material Nr. (12NC)             | 929001119008                         |
| Numerator - Quantity Per Pack   | 1                                    |
| EAN/UPC - Product/Case          | 8718291793120                        |
| Numerator - Packs per outer box | 10                                   |
| EAN/UPC - Case                  | 8718291793137                        |

Dimensional drawing

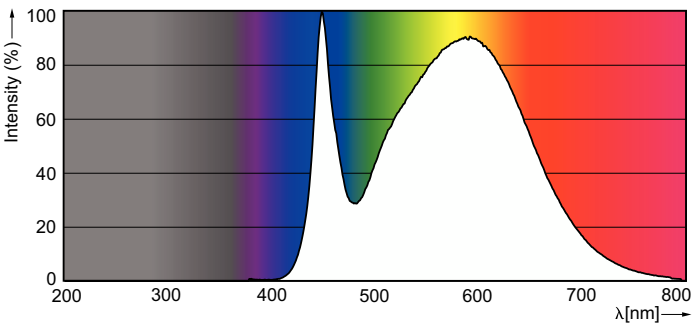


| Product                              | D1       | D2    | A1         | A2         | A3         |
|--------------------------------------|----------|-------|------------|------------|------------|
| MAS LEDtube STD 1200mm 14.5W840 T8 I | 25.68 mm | 28 mm | 1,198.0 mm | 1,205.0 mm | 1,212.0 mm |

Photometric data



Light Distribution Diagram - MAS LEDtube STD 1200mm 14.5W840 T8 I



Spectral Power Distribution Colour - MAS LEDtube STD 1200mm 14.5W840 T8 I

## MASTER LEDtube EM/Mains T8

