



MASTER LEDtube EM/ Mains T8

MAS LEDtube STD 1200mm 14.5W840 T8 I

The Philips MASTER LEDtube integrates a LED light source into a traditional fluorescent form factor. Its unique design creates a perfectly uniform visual appearance which cannot be distinguished from traditional fluorescent. This product is the ideal solution for up lighting in general lighting applications.

Warnings and Safety

• –

Product data

General Information		Input Frequency	
Cap-Base	G13 [Medium Bi-Pin Fluorescent]	Power Consumption	14.5 W
Nominal lifetime	40,000 hour(s)	Starting Time (Nom)	0.5 s
Switching Cycle	50,000	Warm-up time to 60% light	Instant full light s
Lighting Technology	LED	Power Factor (Fraction)	0.9
EU RoHS compliant	Yes	Voltage (Nom)	220-240 V
Light Technical		Temperature	
Color Code	840 [CCT of 4000K]	Ambient temperature range	-20 °C to 45 °C
Beam Angle (Nom)	150 degree(s)	T-Case Maximum (Nom)	45 °C
Luminous Flux	1,600 lm	Controls and Dimming	
Correlated Color Temperature (Nom)	4000 K	Dimmable	No
Color Consistency	<6	Mechanical and Housing	
Color rendering index (CRI)	83	Product Length	47-1/4 inch
LLMF At End Of Nominal Lifetime (Nom)	70 %		
Operating and Electrical			
Line Frequency	50 to 60 Hz		

MASTER LEDtube EM/Mains T8

Approval and Application

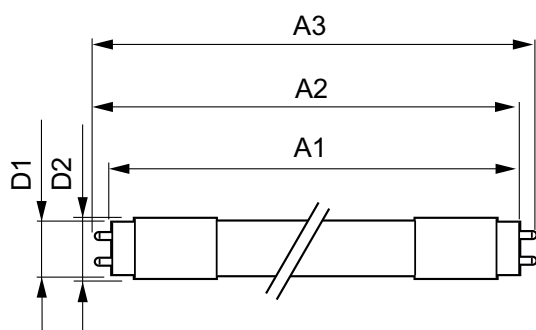
Energy Saving Product	Yes
Suitable For Accent Lighting	No
Approval Marks	CE marking RoHS compliance KEMA Keur certificate
Energy Consumption kWh/1000 h	14.5 kWh

Product Data

Order product name	MAS LEDtube STD 1200mm 14.5W840 T8 I
Full product name	MAS LEDtube STD 1200mm 14.5W840 T8 I

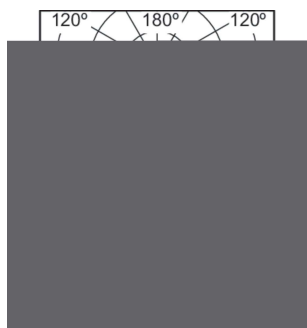
Full product code	871829179312000
Order code	929001119008
Material Nr. (12NC)	929001119008
Numerator - Quantity Per Pack	1
EAN/UPC - Product/Case	8718291793120
Numerator - Packs per outer box	10
EAN/UPC - Case	8718291793137

Dimensional drawing

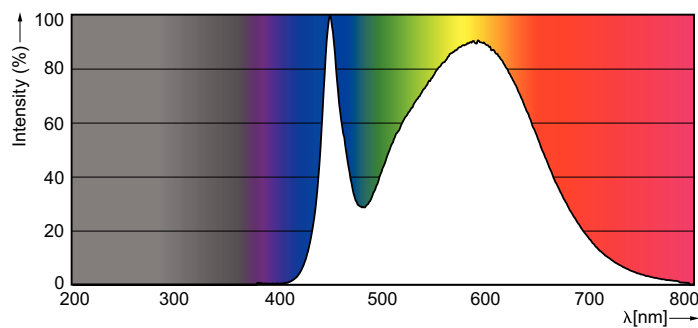


Product	D1	D2	A1	A2	A3
MAS LEDtube STD 1200mm 14.5W840 T8 I	25.68 mm	28 mm	1,198.0 mm	1,205.0 mm	1,212.0 mm

Photometric data



Light Distribution Diagram - MAS LEDtube STD 1200mm 14.5W840 T8 I



Spectral Power Distribution Colour - MAS LEDtube STD 1200mm 14.5W840 T8 I

MASTER LEDtube EM/Mains T8

