



LED InstantFit Lamps

16.5T8/24-5000 IF-6U 10/1

Philips LED T8 InstantFit Lamps are an ideal energy saving choice for existing linear fluorescent fixtures.

Warnings and Safety

- Perform a visual inspection to ensure lamp holders (or sockets) are not damaged or loose. If the lamp holders (or sockets) are damaged, corroded, charred, blackened or loose, contact a qualified electrician for proper replacement.
- Please refer to the ballast compatibility guide located at www.philips.com/instantfit.

Product data

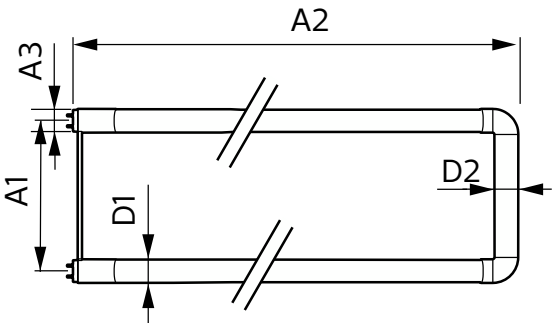
General Information		Starting Time (Nom)		0.5 s
Cap-Base	G13 [Medium Bi-Pin Fluorescent]	Warm-up time to 60% light		Instant full light s
Nominal lifetime	40,000 hour(s)	Power Factor (Fraction)		0.9
Switching Cycle	50,000	Voltage (Nom)		120-277 V
Lighting Technology	LED	Temperature		
EU RoHS compliant	Yes	Ambient temperature range		-20 °C to 45 °C
Light Technical		T-Case Maximum (Nom)		50 °C
Color Code	850 [CCT of 5000K]	Controls and Dimming		
Beam Angle (Nom)	160 degree(s)	Dimmable		No
Luminous Flux	2,150 lm	Mechanical and Housing		
Correlated Color Temperature (Nom)	5000 K	Product Length		600 mm
Color Consistency	<6	Approval and Application		
Color rendering index (CRI)	83	Energy Saving Product		Yes
LLMF At End Of Nominal Lifetime (Nom)	70 %	Suitable For Accent Lighting		No
Operating and Electrical		Approval Marks		CE marking UL certificate RoHS compliance KEMA Keur certificate
Line Frequency	50 to 60 Hz			
Input Frequency	50 to 60 Hz			
Power Consumption	16.5 W			

LED InstantFit Lamps

Energy Consumption kWh/1000 h	16.5 kWh
Product Data	
Order product name	16.5T8/24-5000 IF-6U 10/1
Full product name	16.5T8/24-5000 IF-6U 10/1
Order code	452698
Material Nr. (12NC)	929001119904

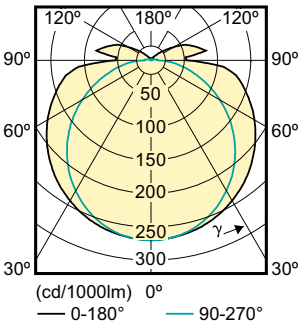
Numerator - Quantity Per Pack	1
EAN/UPC - Product/Case	046677452698
Numerator - Packs per outer box	10
EAN/UPC - Case	50046677452693

Dimensional drawing

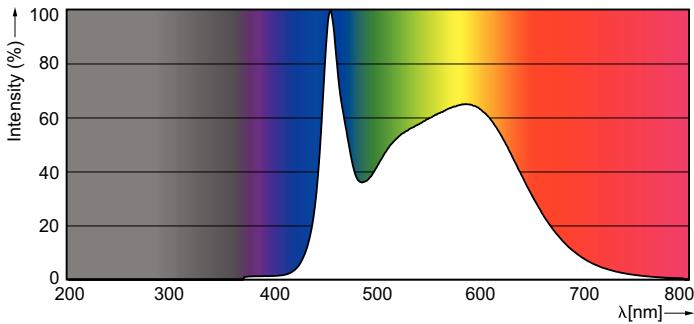


Product	D1	D2	A1	A2	A3
16.5T8/24-5000 IF-6U 10/1	25.68 mm	28 mm	570 mm	577.1 mm	577.1 mm

Photometric data



Light Distribution Diagram - 16.5T8/24-5000 IF-6U 10/1



Spectral Power Distribution Colour - 16.5T8/24-5000 IF-6U 10/1

