



MASTER LEDtube EM/ Mains T8

MASTER LEDtube STD 600mm 10W830 T8 I

The Philips MASTER LEDtube integrates a LED light source into a traditional fluorescent form factor. Its unique design creates a perfectly uniform visual appearance which cannot be distinguished from traditional fluorescent. For those that are looking for value for money within limited budget and re-lamping efforts for better light effect and lifetime.

Warnings and Safety

• –

Product data

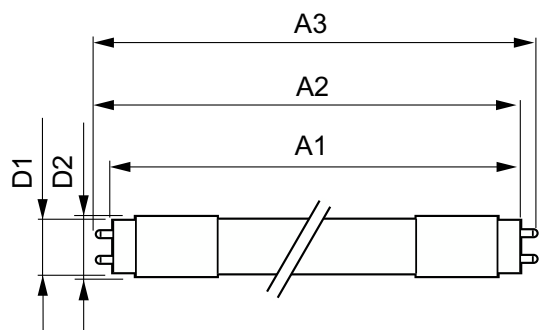
General Information	
Cap-Base	G13 [Medium Bi-Pin Fluorescent]
Nominal lifetime	40,000 hour(s)
Switching Cycle	50,000
Lighting Technology	LED
EU RoHS compliant	Yes
Light Technical	
Color Code	830 [CCT of 3000K]
Beam Angle (Nom)	150 degree(s)
Luminous Flux	1,000 lm
Correlated Color Temperature (Nom)	3000 K
Color Consistency	<6
Color rendering index (CRI)	83
LLMF At End Of Nominal Lifetime (Nom)	70 %

Operating and Electrical	
Line Frequency	50 to 60 Hz
Input Frequency	50 to 60 Hz
Power Consumption	10 W
Starting Time (Nom)	0.5 s
Warm-up time to 60% light	Instant full light s
Power Factor (Fraction)	0.9
Voltage (Nom)	220-240 V
Temperature	
Ambient temperature range	-20 °C to 45 °C
T-Case Maximum (Nom)	50 °C
Controls and Dimming	
Dimmable	No

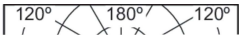
MASTER LEDtube EM/Mains T8

Mechanical and Housing	
Product Length	600 mm
Approval and Application	
Energy Saving Product	Yes
Suitable For Accent Lighting	No
Approval Marks	CE marking RoHS compliance KEMA Keur certificate
Energy Consumption kWh/1000 h	10 kWh
Product Data	
Order product name	MAS LEDtube STD 600mm 10W830 T8 I

Dimensional drawing



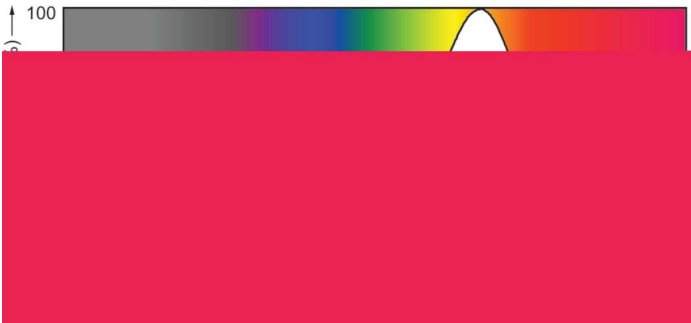
Photometric data



Light Distribution Diagram - MAS LEDtube STD 600mm 10W830 T8 I

Full product name	MASTER LEDtube STD 600mm 10W830 T8 I
Full product code	871869642192500
Order code	42192500
Material Nr. (12NC)	929001127108
Numerator - Quantity Per Pack	1
EAN/UPC - Product/Case	8718696421925
Numerator - Packs per outer box	10
EAN/UPC - Case	8718696421932

Product	D1	D2	A1	A2	A3
MAS LEDtube STD 600mm 10W830 T8 I	25.68 mm	28 mm	588.5 mm	595.5 mm	602.5 mm



Spectral Power Distribution Colour - MAS LEDtube STD 600mm 10W830 T8 I

MASTER LEDtube EM/Mains T8

