



MASTER LEDtube EM/ Mains T8

MAS LEDtube 1200mm UO 18W 840 T8 RS

The Philips MASTER LEDtube integrates a LED light source into a traditional fluorescent form factor. Its unique design creates a perfectly uniform visual appearance which cannot be distinguished from traditional fluorescent. This product is the ideal solution for up lighting in general lighting applications.

Warnings and Safety

- -
- -

Product data

General Information	
Cap-Base	G13 [Medium Bi-Pin Fluorescent]
Nominal lifetime	50,000 hour(s)
Switching Cycle	50,000
Lighting Technology	LED
EU RoHS compliant	Yes
Light Technical	
Color Code	840 [CCT of 4000K]
Beam Angle (Nom)	160 degree(s)
Luminous Flux	2,500 lm
Correlated Color Temperature (Nom)	4000 K
Luminous Efficacy (rated) (Nom)	139 lm/W
Color Consistency	<6
Color rendering index (CRI)	83
LLMF At End Of Nominal Lifetime (Nom)	70 %

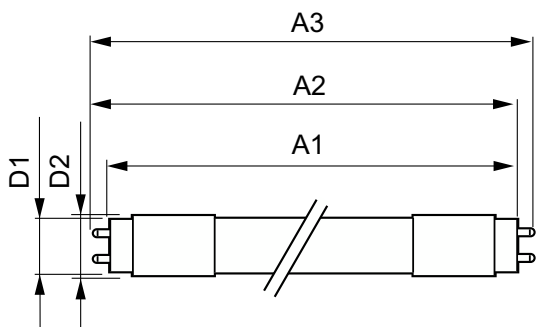
Operating and Electrical	
Line Frequency	50 to 60 Hz
Input Frequency	50 to 60 Hz
Power Consumption	18 W
Lamp Current (Max)	82 mA
Lamp Current (Min)	75 mA
Starting Time (Nom)	0.5 s
Warm-up time to 60% light	0.1 s
Power Factor (Fraction)	0.9
Voltage (Nom)	220-240 V
Temperature	
Ambient temperature range	-20 °C to 35 °C
T-Case Maximum (Nom)	55 °C

MASTER LEDtube EM/Mains T8

Controls and Dimming	
Dimmable	No
Mechanical and Housing	
Product Length	47-1/4 inch
Approval and Application	
Energy Saving Product	Yes
Suitable For Accent Lighting	No
Approval Marks	CE marking KEMA Keur certificate RoHS compliance
Energy Consumption kWh/1000 h	18 kWh

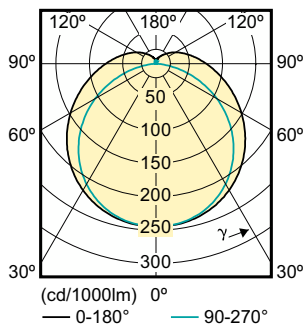
Product Data	
Order product name	MAS LEDtube 1200mm UO 18W 840 T8 RS
Full product name	MAS LEDtube 1200mm UO 18W 840 T8 RS
Full product code	871869646151800
Order code	929001148902
Material Nr. (12NC)	929001148902
Numerator - Quantity Per Pack	1
EAN/UPC - Product/Case	8718696461518
Numerator - Packs per outer box	10
EAN/UPC - Case	8718696461525

Dimensional drawing



Product	D1	D2	A1	A2	A3
MAS LEDtube 1200mm UO 18W 840 T8 RS	25.7 mm	28 mm	1,198 mm	1,205 mm	1,212 mm

Photometric data



Light Distribution Diagram - MAS LEDtube 1200mm UO 18W 840 T8 RS

Spectral Power Distribution Colour - MAS LEDtube 1200mm UO 18W 840 T8 RS

MASTER LEDtube EM/Mains T8

