



MASTER LEDtube EM/ Mains T8

MASTER LEDtube 600mm 9W 865 T8 RS

The Philips MASTER LEDtube integrates a LED light source into a traditional fluorescent form factor. Its unique design creates a perfectly uniform visual appearance which cannot be distinguished from traditional fluorescent. For those that are looking for value for money within limited budget and re-lamping efforts for better light effect and lifetime.

Warnings and Safety

• –

Product data

General Information	
Cap-Base	G13 [Medium Bi-Pin Fluorescent]
Nominal lifetime	50,000 hour(s)
Switching Cycle	50,000
Lighting Technology	LED
EU RoHS compliant	Yes
Light Technical	
Color Code	865 [CCT of 6500K]
Beam Angle (Nom)	160 degree(s)
Luminous Flux	1,050 lm
Correlated Color Temperature (Nom)	6500 K
Luminous Efficacy (rated) (Nom)	117 lm/W
Color Consistency	<6
Color rendering index (CRI)	83
LLMF At End Of Nominal Lifetime (Nom)	70 %

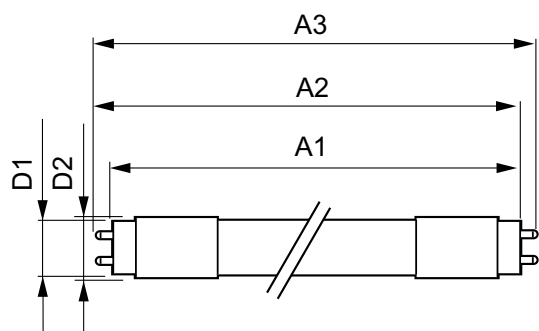
Operating and Electrical	
Line Frequency	50 to 60 Hz
Input Frequency	50 to 60 Hz
Power Consumption	9 W
Lamp Current (Max)	43 mA
Lamp Current (Min)	36 mA
Starting Time (Nom)	0.5 s
Warm-up time to 60% light	0.1 s
Power Factor (Fraction)	0.9
Voltage (Nom)	220-240 V
Temperature	
Ambient temperature range	-20 °C to 35 °C
T-Case Maximum (Nom)	55 °C

MASTER LEDtube EM/Mains T8

Controls and Dimming	
Dimmable	No
Mechanical and Housing	
Product Length	600 mm
Approval and Application	
Energy Saving Product	Yes
Suitable For Accent Lighting	No
Approval Marks	CE marking KEMA Keur certificate RoHS compliance
Energy Consumption kWh/1000 h	9 kWh

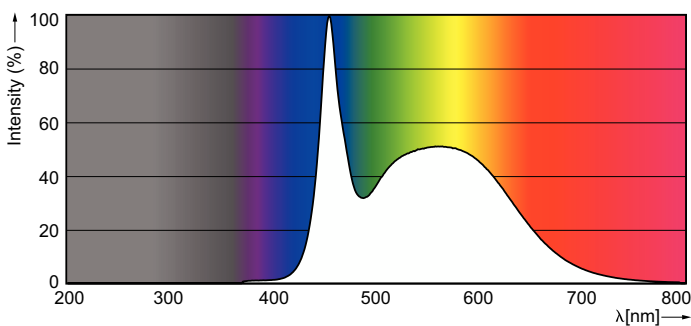
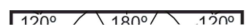
Product Data	
Order product name	MAS LEDtube 600mm 9W 865 T8 RS
Full product name	MASTER LEDtube 600mm 9W 865 T8 RS
Full product code	871869646145700
Order code	46145700
Material Nr. (12NC)	929001149602
Numerator - Quantity Per Pack	1
EAN/UPC - Product/Case	8718696461457
Numerator - Packs per outer box	10
EAN/UPC - Case	8718696461464

Dimensional drawing



Product	D1	D2	A1	A2	A3
MAS LEDtube 600mm 9W 865 T8 RS	25.7 mm	28 mm	588.5 mm	595.5 mm	602.5 mm

Photometric data



Light Distribution Diagram - MAS LEDtube 600mm 9W 865 T8 RS

Spectral Power Distribution Colour - MAS LEDtube 600mm 9W 865 T8 RS

MASTER LEDtube EM/Mains T8

