



MASTER LEDtube InstantFit HF T8

MASTER LEDtube HF 1200mm HO 18W865 T8

The Philips MASTER LEDtube integrates a LED light source into a traditional fluorescent form factor. Its unique design creates a perfectly uniform visual appearance which cannot be distinguished from traditional fluorescent. The MASTER LEDtube Performance is the ideal solution for customers which have higher light requirements and the want to maximize value over lifetime.(need the longest lifetime). Full energy savings and TCO benefits.

Warnings and Safety

- NOTES: The overall energy efficiency and light distribution of any installation that uses these lamps are determined by the design of the installation.

Product data

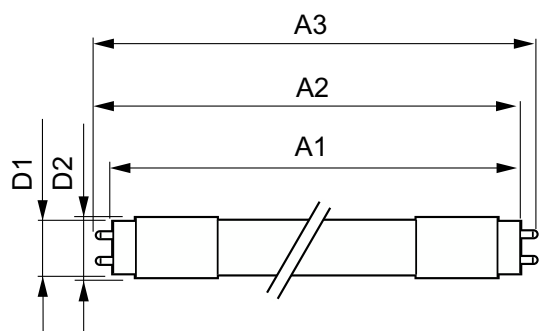
General Information	
Cap-Base	G13 [Medium Bi-Pin Fluorescent]
Nominal lifetime	50,000 hour(s)
Switching Cycle	50,000
Lighting Technology	LED
EU RoHS compliant	Yes
Light Technical	
Color Code	865 [CCT of 6500K]
Beam Angle (Nom)	160 degree(s)
Luminous Flux	2,100 lm
Correlated Color Temperature (Nom)	6500 K
Color Consistency	<6
Color rendering index (CRI)	83

LLMF At End Of Nominal Lifetime (Nom) 70 %	
Operating and Electrical	
Line Frequency	25000-80000 Hz
Input Frequency	25000-80000 Hz
Power Consumption	18 W
Starting Time (Nom)	0.5 s
Warm-up time to 60% light	Instant full light s
Power Factor (Fraction)	0.9
Voltage (Nom)	50-100 V
Temperature	
Ambient temperature range	-20 °C to 35 °C
T-Case Maximum (Nom)	40 °C

MASTER LEDtube InstantFit HF T8

Controls and Dimming	
Dimmable	No
Mechanical and Housing	
Product Length	1,200 mm
Approval and Application	
Energy Saving Product	Yes
Suitable For Accent Lighting	No
Approval Marks	CE marking RoHS compliance KEMA Keur certificate
Energy Consumption kWh/1000 h	20 kWh

Dimensional drawing



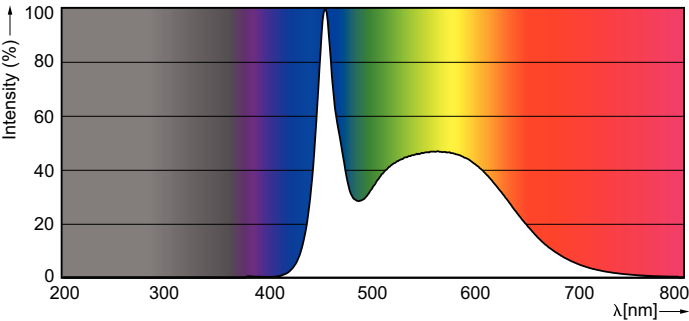
Photometric data



Light Distribution Diagram - MAS LEDtube HF 1200mm HO 18W865 T8

Product Data	
Order product name	MAS LEDtube HF 1200mm HO 18W865 T8
Full product name	MASTER LEDtube HF 1200mm HO 18W865 T8
Full product code	871869647127200
Order code	47127200
Material Nr. (12NC)	929001155202
Numerator - Quantity Per Pack	1
EAN/UPC - Product/Case	8718696471272
Numerator - Packs per outer box	10
EAN/UPC - Case	8718696471289

Product	D1	D2	A1	A2	A3
MAS LEDtube HF 1200mm HO 18W865 T8	25.6 mm	28 mm	1,198.0 mm	1,205.0 mm	1,212.0 mm



Spectral Power Distribution Colour - MAS LEDtube HF 1200mm HO 18W865 T8

MASTER LEDtube InstantFit HF T8

