



MASTER LEDspot LV AR111

MAS LEDspotLV D 15-75W 930 AR111 24D

Delivering a warm, halogen-like accent beam, MASTER LEDspot LV AR111 is an ideal retrofit solution for spot and general lighting applications in the hospitality and retail industry. It is particularly suitable for general lighting where the light is on all the time, such as creative accent lighting applications in shops, restaurants, hotels, and especially for galleries, exhibitions and museums. The robustly designed MASTER LEDspot LV AR111 offers various beam angles for a clearly defined beam spread. There is no UV or IR in the beam, making it suitable for illuminating heat-sensitive objects (food, organic materials, paintings, etc.). The patented intelligent driver enables broad compatibility with existing electromagnetic and electronic halogen transformers. MASTER LEDspot LV AR111 delivers huge energy savings and minimises maintenance cost without any reduction in brightness.

Product data

| General Information | |
|---------------------|-----------|
| Cap base | G53 [G53] |
| Nominal lifetime | 40,000 h |
| Switching Cycle | 50,000 |
| Lighting Technology | LED |
| EU RoHS compliant | Yes |

| Light Technical | |
|-------------------------------|--------------------|
| Colour Code | 930 [CCT of 3000K] |
| Beam angle (nom.) | 24 degree(s) |
| Luminous Flux | 810 lm |
| Luminous intensity (nom.) | 4,000 cd |
| Colour designation | White (WH) |
| Correlated Colour Temperature | 3000 K |

| | |
|--|------------|
| Luminous efficacy (rated) (nom.) | 54.00 lm/W |
| Colour consistency | <3 |
| Colour rendering index (CRI) | 90 |
| LLMF at end of nominal lifetime (nom.) | 70 % |
| Luminous flux in 90° cone (rated) | 810 lm |

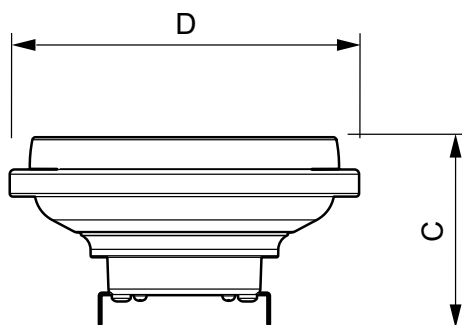
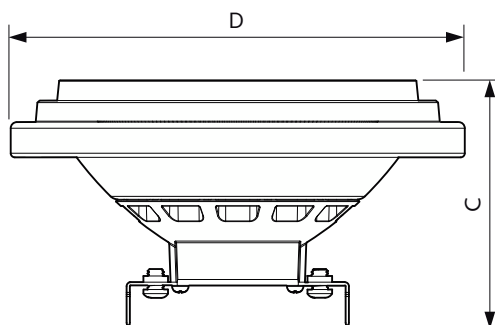
| Operating and Electrical | |
|---------------------------|----------|
| Line Frequency | - Hz |
| Input frequency | - Hz |
| Power Consumption | 15 W |
| Lamp current (nom.) | 1,800 mA |
| Wattage equivalent | 75 W |
| Starting time (nom.) | 0.5 s |
| Warm-up time to 60% light | 0.5 s |

MASTER LEDspot LV AR111

| | |
|------------------------------------|--------|
| Power Factor (Fraction) | 0.7 |
| Voltage (nom.) | 12 V |
| Temperature | |
| T-Case maximum (nom.) | 74 °C |
| Controls and Dimming | |
| Dimmable | Yes |
| Mechanical and Housing | |
| Bulb shape | AR111 |
| Approval and Application | |
| Suitable for accent lighting | Yes |
| Energy consumption kWh/1,000 hours | 17 kWh |

| | |
|-----------------------------------|--------------------------------------|
| EyeComfort | Yes |
| Product Data | |
| Order product name | MAS LEDspotLV D 15-75W 930 AR111 24D |
| Full product name | MAS LEDspotLV D 15-75W 930 AR111 24D |
| Full EOC | 871869651498600 |
| Order code | 51498600 |
| Material no. (12 NC) | 929001170302 |
| Local order code | MLED15AR113024N |
| SAP numerator – quantity per pack | 1 |
| EAN/UPC – Product/Case | 8718696514986 |
| Numerator – packs per outer box | 6 |
| EAN/UPC – Case | 8718696514993 |

Dimensional drawing

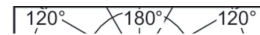
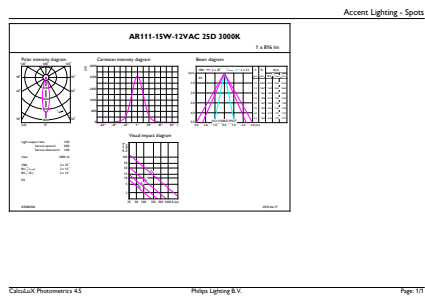


| Product | D | C |
|--------------------------------------|--------|-------|
| MAS LEDspotLV D 15-75W 930 AR111 24D | 111 mm | 62 mm |

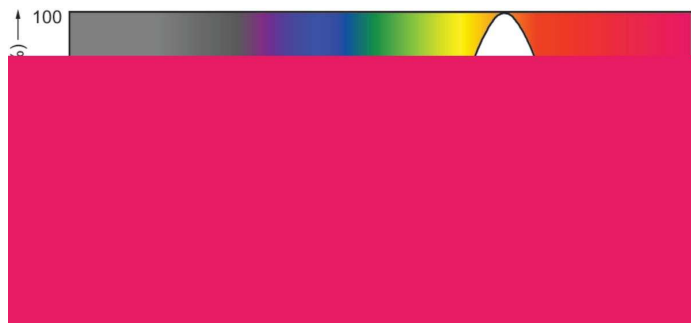
| Product |
|--------------------------------------|
| MAS LEDspotLV D 15-75W 930 AR111 24D |

MASTER LEDspot LV AR111

Photometric data



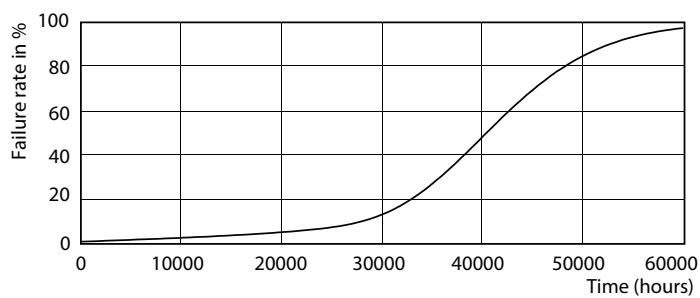
Accent Lighting Spots - MAS LEDspotLV D 15-75W 930 AR111 24D



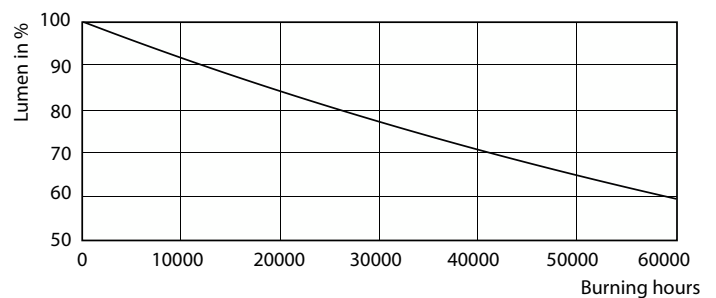
Light Distribution Diagram - MAS LEDspotLV D 15-75W 930 AR111 24D

Spectral Power Distribution Colour - MAS LEDspotLV D 15-75W 930 AR111 24D

Lifetime



Life Expectancy Diagram - MAS LEDspotLV D 15-75W 930 AR111 24D



Lumen Maintenance Diagram - MAS LEDspotLV D 15-75W 930 AR111 24D

MASTER LEDspot LV AR111

