



MASTER LEDtube EM/ Mains T8

MAS LEDtube 1200mm 18W840 T8 I

The Philips MASTER LEDtube integrates a LED light source into a traditional fluorescent form factor. Its unique design creates a perfectly uniform visual appearance, which cannot be distinguished from traditional fluorescent. These T8 LED tubes are the right choice for absolute performance and are designed to stand up to everyday conditions. Unparalleled savings thanks to low energy consumption and an exceptionally long lifetime ensure this tube masters every demanding application.

Warnings and Safety

- NOTE: The overall energy efficiency and light distribution of any installation that uses these lamps will be determined by the design of the installation.

Product data

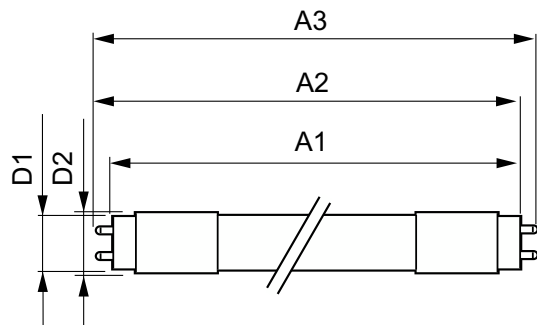
General Information	
Cap-Base	G13 [Medium Bi-Pin Fluorescent]
Nominal lifetime	40,000 hour(s)
Switching Cycle	50,000
Lighting Technology	LED
EU RoHS compliant	Yes
Light Technical	
Color Code	840 [CCT of 4000K]
Beam Angle (Nom)	160 degree(s)
Luminous Flux	2,100 lm
Correlated Color Temperature (Nom)	4000 K
Color Consistency	<6
Color rendering index (CRI)	83

LLMF At End Of Nominal Lifetime (Nom) 70 %	
Operating and Electrical	
Line Frequency	50 to 60 Hz
Input Frequency	50 to 60 Hz
Power Consumption	18 W
Starting Time (Nom)	0.5 s
Warm-up time to 60% light	Instant full light s
Power Factor (Fraction)	0.9
Voltage (Nom)	220-240 V
Temperature	
Ambient temperature range	-20 °C to 45 °C

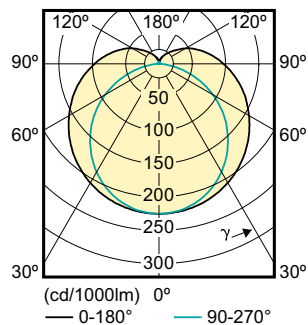
MASTER LEDtube EM/Mains T8

T-Case Maximum (Nom)	60 °C
Controls and Dimming	
Dimmable	No
Mechanical and Housing	
Product Length	1,200 mm
Approval and Application	
Energy Saving Product	Yes
Suitable For Accent Lighting	No
Approval Marks	CE marking RoHS compliance KEMA Keur certificate
Energy Consumption kWh/1000 h	18 kWh

Dimensional drawing



Photometric data



Light Distribution Diagram - MAS LEDtube 1200mm 18W840 T8 I

Product Data

Order product name	MAS LEDtube 1200mm 18W840 T8 I
Full product name	MAS LEDtube 1200mm 18W840 T8 I
Full product code	871869651118300
Order code	929001178608
Material Nr. (12NC)	929001178608
Numerator - Quantity Per Pack	1
EAN/UPC - Product/Case	8718696511183
Numerator - Packs per outer box	10
EAN/UPC - Case	8718696511190

Product	D1	D2	A1	A2	A3
MAS LEDtube 1200mm 18W840 T8 I	25.68 mm	28 mm	1,198.0 mm	1,205.0 mm	1,212.0 mm



Spectral Power Distribution Colour - MAS LEDtube 1200mm 18W840 T8 I

MASTER LEDtube EM/Mains T8

