



MASTER LEDtube InstantFit HF

MASTER LEDtube HF 600mm 10.5W830 T8

The Philips MASTER LEDtube integrates a LED light source into a traditional fluorescent form factor. Its unique design creates a perfectly uniform visual appearance which cannot be distinguished from traditional fluorescent. This product is the ideal solution for up lighting in general lighting applications.

Product data

General Information			
Cap base	G13 [Medium Bi-Pin Fluorescent]	Power (Rated) (Nom)	10.5 W
Main application	Industrial	Lamp current (max.)	400 mA
Nominal lifetime (nom.)	50000 h	Lamp current (min.)	200 mA
Switching cycle	50000X	Starting time (nom.)	0.5 s
B50L70	50000 h	Warm-up time to 60% light (nom.)	0.5 s
Light Technical		Power factor (nom.)	0.9
Colour code	830 [CCT of 3,000 K]	Voltage (Nom)	30-80 V
Beam Angle (Nom)	160 °	Temperature	
Luminous flux (nom.)	1000 lm	T storage (max.)	65 °C
Luminous flux (rated) (nom.)	1000 lm	T storage (min.)	-40 °C
Rated beam angle	160 °	T-Case maximum (nom.)	40 °C
Correlated colour temperature (nom.)	3000 K	Controls and Dimming	
Colour consistency	<6	Dimmable	no
Color rendering index (nom.)	83	Mechanical and Housing	
LLMF at end of nominal lifetime (nom.)	70 %	Product length	600 mm
Operating and Electrical			
Input frequency	20000-80000 Hz		

MASTER LEDtube InstantFit HF

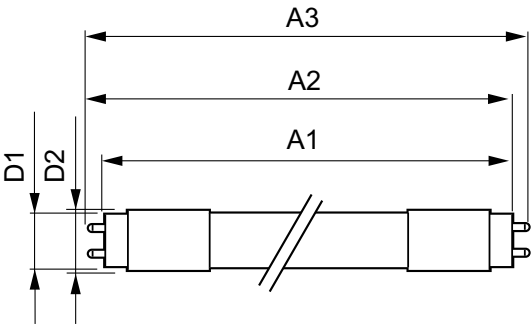
Approval and Application	
Energy efficiency label (EEL)	A+
Energy-saving product	Yes
Suitable for accent lighting	No
Energy Consumption kWh/1000 h	14 kWh
Product Data	
Full product code	871869655965900
Order product name	MASTER LEDtube HF 600mm 10.5W830 T8

EAN/UPC – product	8718696559659
Order code	55965900
Numerator – quantity per pack	1
Numerator – packs per outer box	10
Material no. (12NC)	929001219502
Net weight (piece)	0.160 kg

Warnings and Safety

- NOTES: The overall energy efficiency and light distribution of any installation that uses these lamps are determined by the design of the installation.

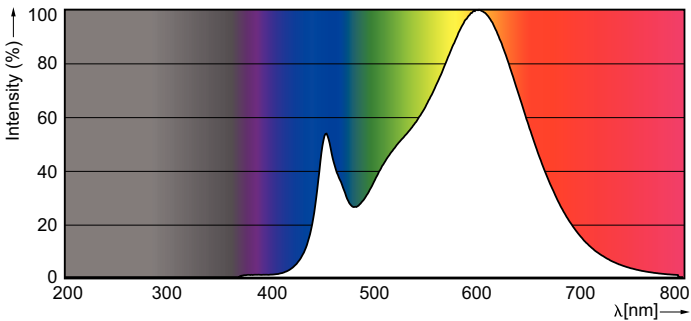
Dimensional drawing



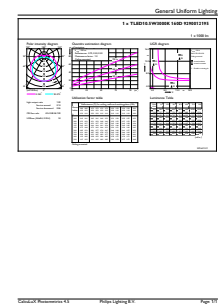
TLED 230V 10.5W-36W 1000lm160D3000K T8ND

Product	D1	D2	A1	A2	A3
MASTER LEDtube HF 600mm 10.5W830 T8	25.6 mm	27.8 mm	588.6 mm	595.7 mm	602.8 mm

Photometric data



TLED 230V 10.5W-36W 1000lm /830 160D T8ND



TLED 230V 10.5W-36W 1000lm /830 160D T8ND

MASTER LEDtube InstantFit HF

Photometric data

