



T8

16.5T8/LED/48/835 IF 10/1

Philips InstantFit LED T8 - 4' Ultra High Output (16.5W / 2500 lm / 3500K)

Our TLEDs are available in InstantFit (Type A / Type C) or MainsFit (Ballast bypass / Type B) versions. The InstantFit lamps work on a broad variety of ballasts and LED drivers. Only InstantFit has over 15,000 lamp & ballast combinations delivering even light output, energy savings and a long lifetime. Our MainsFit products feature a double-ended design, simplifying installation while a proprietary safety circuit minimizes a shock risk. Lamp sizes range from 2-foot to 8-foot and U-bend with a variety of lumen outputs.

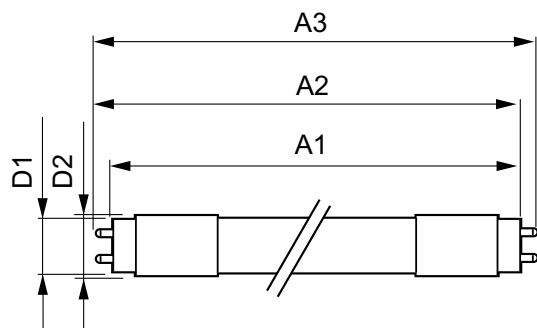
Product data

| General Information | | Power (Rated) (Nom) | |
|---------------------------------------|----------------------------------|---------------------------------|-----------|
| Base | G13 [Medium Bi-Pin Fluorescent] | Lamp Current (Max) | 350 mA |
| EU RoHS compliant | Yes | Lamp Current (Min) | 110 mA |
| Nominal Lifetime (Nom) | 70000 h | Warm Up Time to 60% Light (Nom) | 0.5 s |
| Switching Cycle | 50000X | Voltage (Nom) | 120-277 V |
| Light Technical | | Temperature | |
| Color Code | 835 [CCT of 3500K] | T-Storage (Max) | 65 °C |
| Initial lumen (Nom) | 2400 lm | T-Storage (Min) | -40 °C |
| Correlated Color Temperature (Nom) | 3500 K | T-Case Maximum (Nom) | 45 °C |
| Color Consistency | <6 | Controls and Dimming | |
| Color Rendering Index (Nom) | 82 | Dimmable | No |
| LLMF At End Of Nominal Lifetime (Nom) | 70 % | | |
| Operating and Electrical | | | |
| Input Frequency | 50 to 60 Hz | | |

| | |
|---------------------------------|--------------------------------|
| Mechanical and Housing | |
| Product Length | 1200 mm |
| Approval and Application | |
| Energy Efficiency Label (EEL) | A+ |
| Energy Saving Product | Yes |
| Approbation Marks | UL certificate DLC compliance |
| Energy Consumption kWh/1000 h | 20 kWh |
| Energy Certifications | DLC Standard |
| Product Data | |
| Order product name | 16.5T8 LED/48-3500 IF 10/1 UHO |

| | |
|---------------------------------|--------------|
| EAN/UPC - Product | 046677463137 |
| Order code | 463133 |
| Numerator - Quantity Per Pack | 1 |
| Numerator - Packs per outer box | 10 |
| Material Nr. (12NC) | 929001226704 |
| Net Weight (Piece) | 0.230 kg |
| Model Number | 9290012267 |

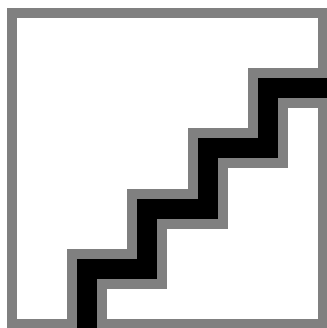
Dimensional drawing



TLED120-277V 16.5W-25/28/32W 3500K G13ND

| Product | D1 | D2 | A1 | A2 | A3 |
|--------------------------------|----------|-------|---------|---------|---------|
| 16.5T8 LED/48-3500 IF 10/1 UHO | 25.68 mm | 28 mm | 1198 mm | 1205 mm | 1212 mm |

Photometric data

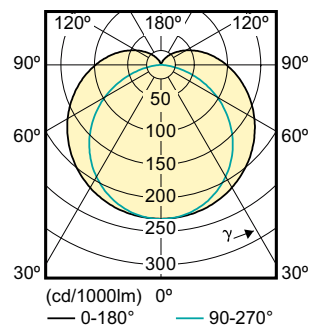


LEDtube 16.5 W, 835, G13, T8, UHO

LEDtube 16.5 W, 835, G13, T8, UHO

T8

Photometric data



LEDtube 16.5 W, G13, T8, UHO

