



# T8

## 16.5T8/LED/48/850 IF 10/1

Philips InstantFit LED Lamp, UHO (16.5W / 2500 lm / 5000K)

Our TLEDs are available in InstantFit (Type A / Type C) or MainsFit (Ballast bypass / Type B) versions. The InstantFit lamps work on a broad variety of ballasts and LED drivers. Only InstantFit has over 15,000 lamp & ballast combinations delivering even light output, energy savings and a long lifetime. Our MainsFit products feature a double-ended design, simplifying installation while a proprietary safety circuit minimizes a shock risk. Lamp sizes range from 2-foot to 8-foot and U-bend with a variety of lumen outputs.

### Product data

General information	
Base	G13 [ Medium Bi-Pin Fluorescent]
EU RoHS compliant	Yes
Nominal Lifetime (Nom)	70000 h
Switching Cycle	50000X
Light technical	
Color Code	850 [ CCT of 5000K]
Beam Angle (Nom)	160 °
Initial lumen (Nom)	2500 lm
Color Designation	Daylight
Correlated Color Temperature (Nom)	5000 K
Luminous Efficacy (rated) (Nom)	151.52 lm/W
Color Consistency	<6
Color Rendering Index (Nom)	82
LLMF At End Of Nominal Lifetime (Nom)	70 %

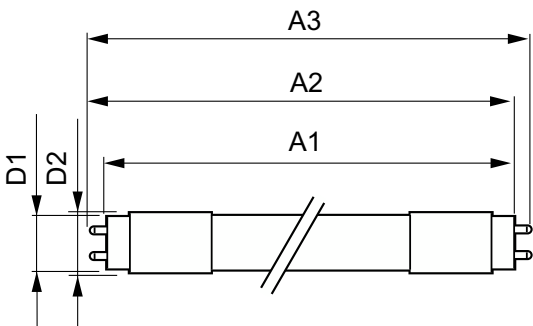
Operating and electrical	
Input Frequency	50 to 60 Hz
Power (Rated) (Nom)	16.5 W
Lamp Current (Max)	350 mA
Lamp Current (Min)	110 mA
Starting Time (Nom)	0.5 s
Warm Up Time to 60% Light (Nom)	0.5 s
Power Factor (Nom)	0.9
Voltage (Nom)	120-277 V
Temperature	
T-Ambient (Max)	45 °C
T-Ambient (Min)	-20 °C
T-Storage (Max)	65 °C
T-Storage (Min)	-40 °C
T-Case Maximum (Nom)	45 °C

T8

Controls and dimming	
Dimmable	No
Mechanical and housing	
Product Length	48 in
Bulb Shape	Tube, double-ended
Approval and application	
Energy Saving Product	Yes
Suitable For Accent Lighting	No
Approbation Marks	CE marking UL certificate DLC compliance
Energy Consumption kWh/1000 h	20 kWh
Energy Certifications	DLC Standard

Product data	
Order product name	16.5T8 LED/48-5000 IF 10/1 UHO
EAN/UPC - Product	046677463151
Order code	463158
Numerator - Quantity Per Pack	1
Numerator - Packs per outer box	10
Material Nr. (12NC)	929001226904
Net Weight (Piece)	0.220 kg
Model Number	9290012269

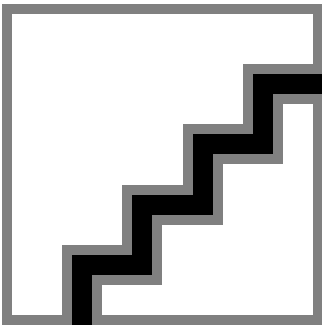
Dimensional drawing



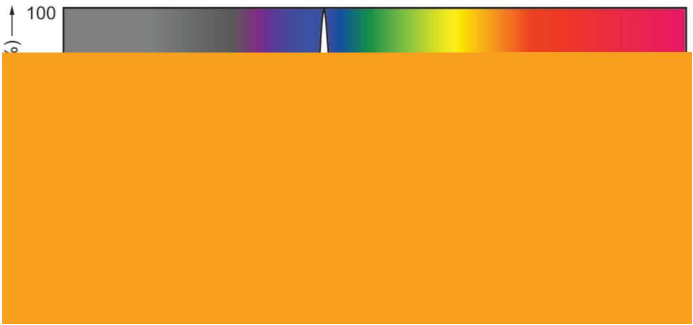
16.5T8 LED/48-5000 IF 10/1 UHO

Product	D1	D2	A1	A2	A3
16.5T8 LED/48-5000 IF 10/1 UHO	25.68 mm	28 mm	1198 mm	1205 mm	1212 mm

Photometric data



LEDtube 16.5 W, 850, G13, T8, UHO



LEDtube 16.5 W, 850, G13, T8, UHO

**T8**

## Photometric data

LEDtube 16.5 W, G13, T8, UHO

