



T8

14T8/48-4000 IF EasySmart 10/1

Our TLEDs are available in InstantFit (Type A / Type C) or MainsFit (Ballast bypass / Type B) versions. The InstantFit lamps work on a broad variety of ballasts and LED drivers. Only InstantFit has over 15,000 lamp & ballast combinations delivering even light output, energy savings and a long lifetime. Our MainsFit products feature a double-ended design, simplifying installation while a proprietary safety circuit minimizes a shock risk. Lamp sizes range from 2-foot to 8-foot and U-bend with a variety of lumen outputs.

Product data

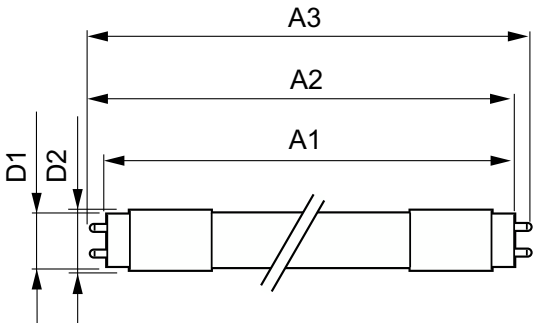
General Information	
Cap-Base	G13 [Medium Bi-Pin Fluorescent]
Nominal lifetime	50,000 hour(s)
Switching Cycle	50,000
Lighting Technology	LED
EU RoHS compliant	Yes
Light Technical	
Color Code	840 [CCT of 4000K]
Luminous Flux	2,100 lm
Correlated Color Temperature (Nom)	4000 K
Color Consistency	<6
Color rendering index (CRI)	82
LLMF At End Of Nominal Lifetime (Nom)	70 %
Operating and Electrical	
Line Frequency	50 to 60 Hz
Input Frequency	50 to 60 Hz
Power Consumption	14 W
Lamp Current (Max)	240 mA

Lamp Current (Min)	130 mA
Starting Time (Nom)	0.5 s
Warm-up time to 60% light	0.5 s
Power Factor (Fraction)	0.9
Voltage (Nom)	120-277, 347 V
Temperature	
Ambient temperature range	-4 °F to 113 °F
T-Case Maximum (Nom)	104 °F
Controls and Dimming	
Dimmable	Wireless Dim
Mechanical and Housing	
Product Length	1,200 mm
Approval and Application	
Energy Saving Product	Yes
Approval Marks	UL certificate RoHS compliance DLC compliance

Energy Certifications	DLC Standard
Product Data	
Order product name	14T8/48-4000 IF 10/1 EasySmart
Full product name	14T8/48-4000 IF EasySmart 10/1
Order code	466474
Material Nr. (12NC)	929001281304

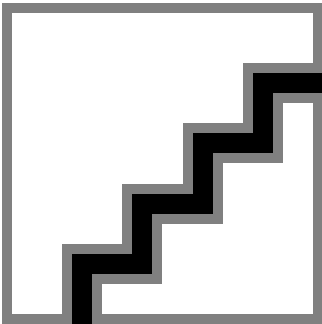
Numerator - Quantity Per Pack	1
EAN/UPC - Product/Case	046677466473
Numerator - Packs per outer box	10
EAN/UPC - Case	50046677466478

Dimensional drawing

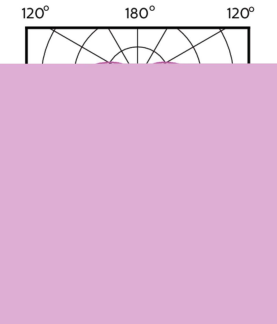


Product	D1	D2	A1	A2	A3
14T8/48-4000 IF 10/1 EasySmart	1-1/16 inch	1-1/16 inch	47-3/16 inch	47-1/2 inch	47-3/4 inch

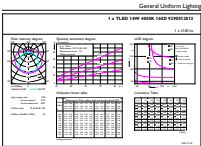
Photometric data



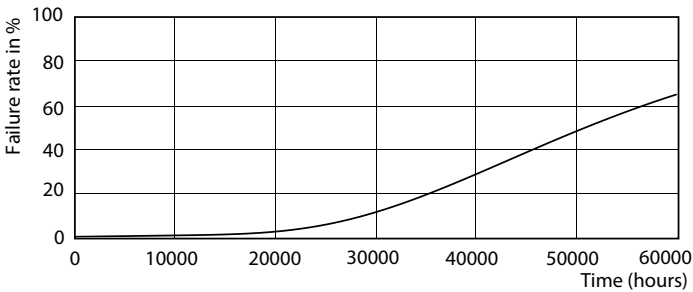
Spectral Power Distribution Colour - 14T8/48-4000 IF 10/1 EasySmart



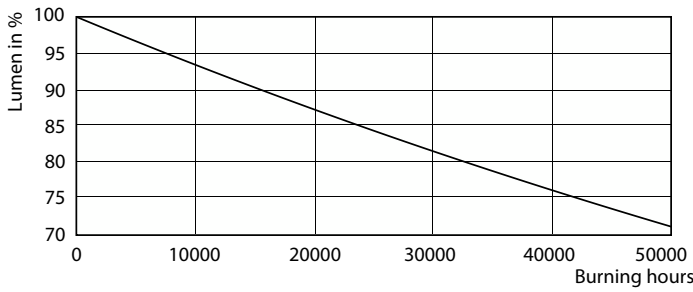
Light Distribution Diagram - 14T8/48-4000 IF 10/1 EasySmart



Lifetime



Life Expectancy Diagram - 14T8/48-4000 IF 10/1 EasySmart



Lumen Maintenance Diagram - 14T8/48-4000 IF 10/1 EasySmart

