



# MASTER LEDtube InstantFit HF



## MASTER LEDtube HF 1200mm HO 14W865 T8

The Philips MASTER LEDtube integrates a LED light source into a traditional fluorescent form factor. Its unique design creates a perfectly uniform visual appearance which cannot be distinguished from traditional fluorescent. This product is the ideal solution for up lighting in general lighting applications.

### Warnings and Safety

- NOTES: The overall energy efficiency and light distribution of any installation that uses these lamps are determined by the design of the installation.

### Product data

General Information	
Cap base	G13 ROT (Rotating) [Medium Bi-Pin Fluorescent]
Nominal lifetime	60,000 h
Switching Cycle	50,000
Lighting Technology	LED
Flux measurement reference	Sphere
CE mark	Yes
EU RoHS compliant	Yes

Light Technical	
Colour Code	865 [CCT of 6500K]
Beam angle (nom.)	160 degree(s)
Luminous Flux	2,100 lm
Colour designation	Cool Daylight
Correlated Colour Temperature	6500 K
Luminous efficacy (rated) (nom.)	150.00 lm/W
Colour consistency	<6

Colour rendering index (CRI)	83
LLMF at end of nominal lifetime (nom.)	70 %

Operating and Electrical	
Line Frequency	20000-75000 Hz
Input frequency	20000-75000 Hz
Power Consumption	14 W
Lamp current (max.)	750 mA
Lamp current (min.)	300 mA
Starting time (nom.)	0.5 s
Warm-up time to 60% light	0.5 s
Power Factor (Fraction)	0.9
Voltage (nom.)	30-80 V

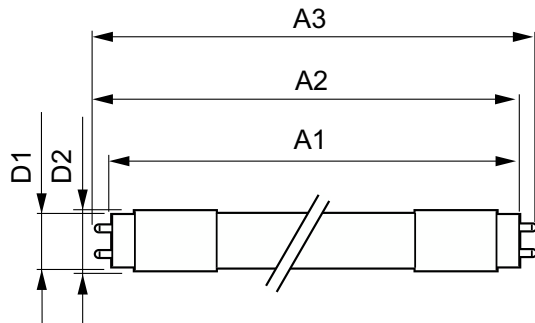
Temperature	
Ambient temperature range	-20°C to 45°C

# MASTER LEDtube InstantFit HF

T-Case maximum (nom.)	55 °C
<b>Controls and Dimming</b>	
Dimmable	No
<b>Mechanical and Housing</b>	
Bulb material	Plastic
Product length	1,200 mm
<b>Approval and Application</b>	
Energy Efficiency Class	D
Energy-saving product	Yes
Approval marks	RoHS compliance TUV CE marking KEMA Keur certificate
Energy consumption kWh/1,000 hours	14 kWh

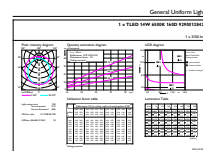
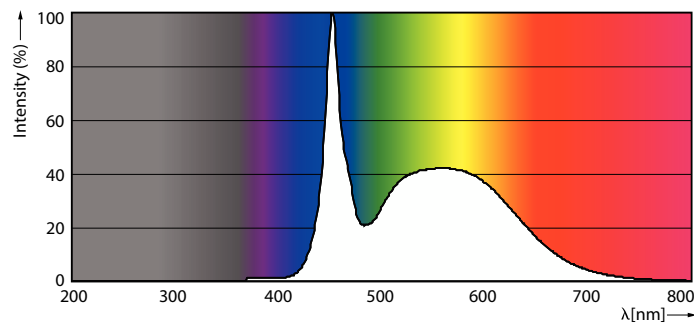
EPREL registration number	387368
<b>Product Data</b>	
Order product name	MAS LEDtube HF 1200mm HO 14W865 T8
Full product name	MASTER LEDtube HF 1200mm HO 14W865 T8
Full EOC	871869668750500
Order code	68750500
Material no. (12 NC)	929001284202
SAP numerator – quantity per pack	1
EAN/UPC – Product/Case	8718696687505
Numerator – packs per outer box	10
EAN/UPC - Case	8718696687512

## Dimensional drawing



Product	D1	D2	A1	A2	A3
MAS LEDtube HF 1200mm HO 14W865 T8	25.6 mm	28 mm	1,198.1 mm	1,205.2 mm	1,212.3 mm

## Photometric data

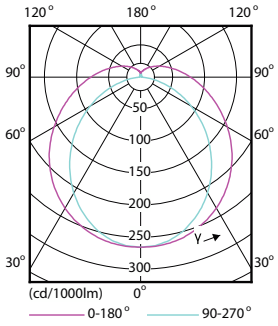


Spectral Power Distribution Colour - MAS LEDtube HF 1200mm HO 14W865 T8

General uniform lighting - MAS LEDtube HF 1200mm HO 14W865 T8

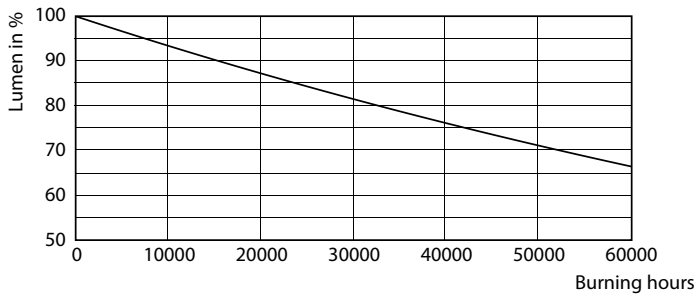
# MASTER LEDtube InstantFit HF

## Photometric data

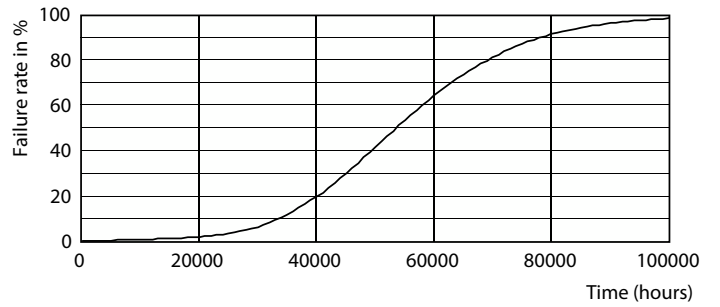


Light Distribution Diagram - MAS LEDtube HF 1200mm HO 14W865 T8

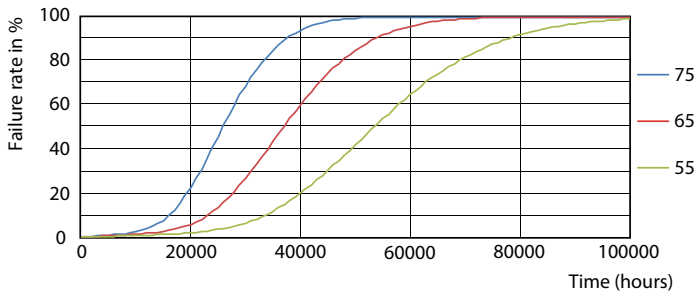
## Lifetime



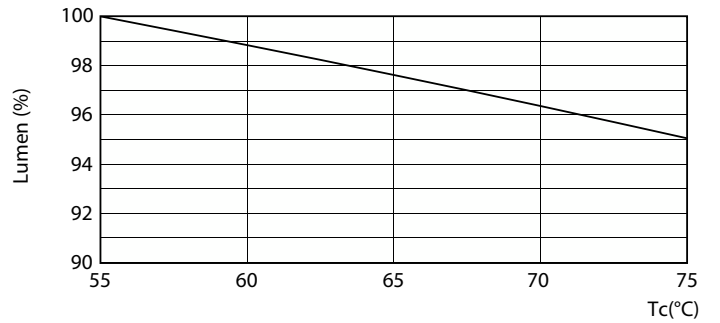
Lumen Maintenance Diagram - MAS LEDtube HF 1200mm HO 14W865 T8



Life Expectancy Diagram - MAS LEDtube HF 1200mm HO 14W865 T8



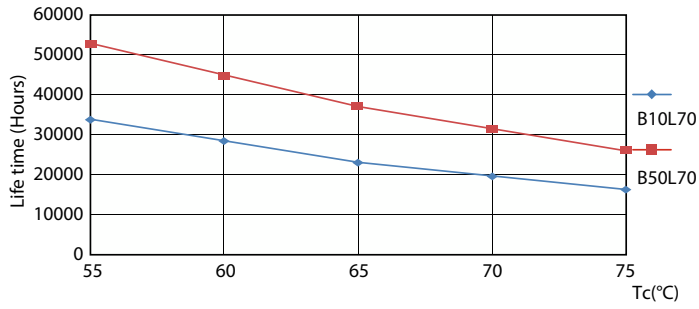
Life Expectancy Diagram - MAS LEDtube HF 1200mm HO 14W865 T8



Lumen Maintenance Diagram - MAS LEDtube HF 1200mm HO 14W865 T8

# MASTER LEDtube InstantFit HF

## Lifetime



Life Expectancy Diagram - MAS LEDtube HF 1200mm HO 14W865 T8

