



CorePro LEDtube InstantFit T8

14T8 PRO LED/48-3000 IF G 10/1

The CorePro LED Type A - Ballast Driven InstantFit TLED is a great LED solution suitable for replacing T8 fluorescent lamps, using the existing ballast. The InstantFit (Type A) lamps can also be used with Philips TLED drivers for Type C applications.

Product data

| General Information | |
|---------------------|---------------------------------|
| Cap-Base | G13 [Medium Bi-Pin Fluorescent] |
| Nominal lifetime | 50,000 hour(s) |
| Switching Cycle | 50,000 |
| Lighting Technology | LED |
| EU RoHS compliant | Yes |

| Light Technical | |
|---------------------------------------|--------------------|
| Color Code | 830 [CCT of 3000K] |
| Luminous Flux | 2,000 lm |
| Correlated Color Temperature (Nom) | 3000 K |
| Color Consistency | <6 |
| Color rendering index (CRI) | 80 |
| LLMF At End Of Nominal Lifetime (Nom) | 70 % |

| Operating and Electrical | |
|--------------------------|-----------------|
| Line Frequency | 20000-120000 Hz |
| Input Frequency | 20000-120000 Hz |
| Power Consumption | 14 W |
| Lamp Current (Max) | 260 mA |
| Lamp Current (Min) | 80 mA |

| | |
|---------------------------|----------------|
| Starting Time (Nom) | 0.5 s |
| Warm-up time to 60% light | 0.5 s |
| Power Factor (Fraction) | 0.9 |
| Voltage (Nom) | 120-277, 347 V |

| Temperature | |
|---------------------------|-----------------|
| Ambient temperature range | -4 °F to 113 °F |
| T-Case Maximum (Nom) | 122 °F |

| Controls and Dimming | |
|----------------------|----|
| Dimmable | No |

| Mechanical and Housing | |
|------------------------|----------|
| Product Length | 1,200 mm |

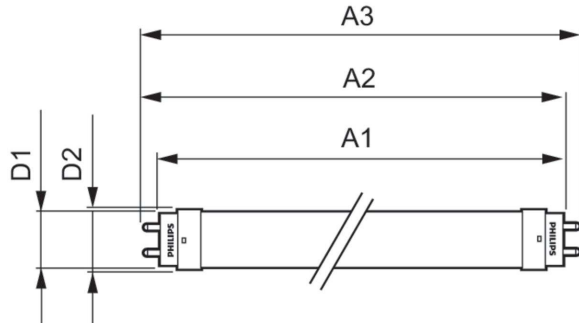
| Approval and Application | |
|--------------------------|---|
| Energy Saving Product | Yes |
| Approval Marks | UL certificate RoHS compliance DLC compliance |

CorePro LEDtube InstantFit T8

| Product Data | |
|-------------------------------|--------------------------------|
| Order product name | 14T8 PRO LED/48-3000 IF G 10/1 |
| Full product name | 14T8 PRO LED/48-3000 IF G 10/1 |
| Order code | 470096 |
| Material Nr. (12NC) | 929001343004 |
| Numerator - Quantity Per Pack | 1 |

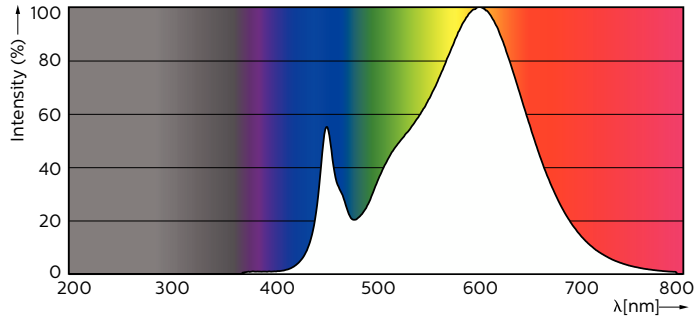
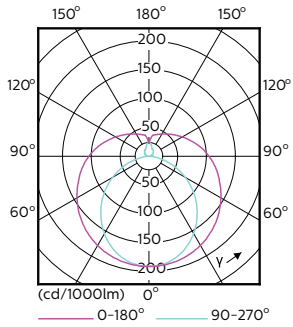
| | |
|---------------------------------|----------------|
| EAN/UPC - Product/Case | 046677452407 |
| Numerator - Packs per outer box | 10 |
| EAN/UPC - Case | 50046677470093 |

Dimensional drawing



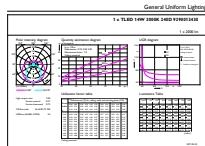
| Product | D1 | D2 | A1 | A2 | A3 |
|--------------------------------|-------------|------------|--------------|-------------|-------------|
| 14T8 PRO LED/48-3000 IF G 10/1 | 1-1/16 inch | 1-1/8 inch | 47-3/16 inch | 47-1/2 inch | 47-3/4 inch |

Photometric data



Light Distribution Diagram - 14T8 PRO LED/48-3000 IF G 10/1

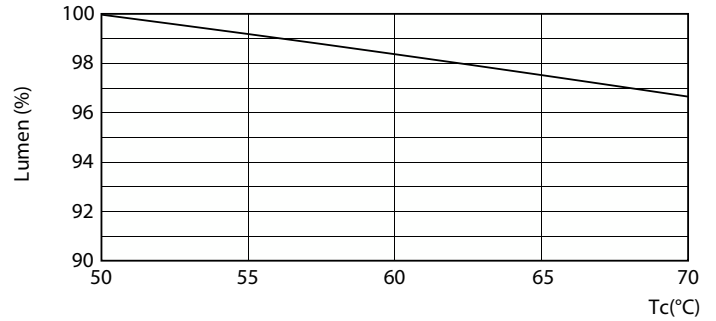
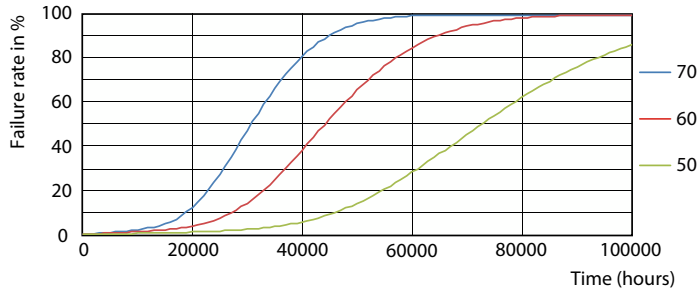
Spectral Power Distribution Colour - 14T8 PRO LED/48-3000 IF G 10/1



General uniform lighting - 14T8 PRO LED/48-3000 IF G 10/1

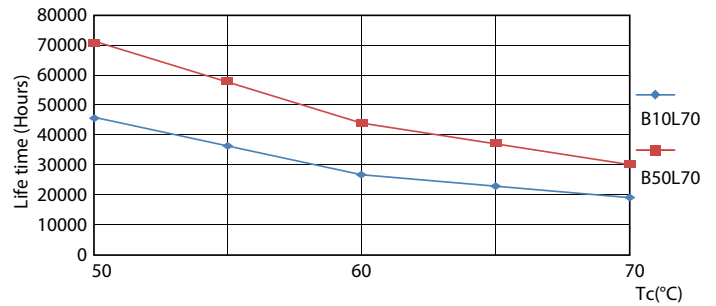
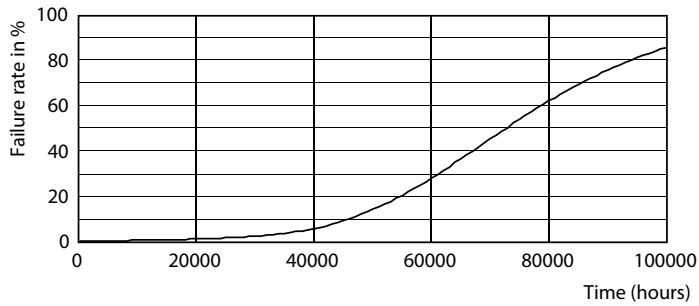
CorePro LEDtube InstantFit T8

Lifetime



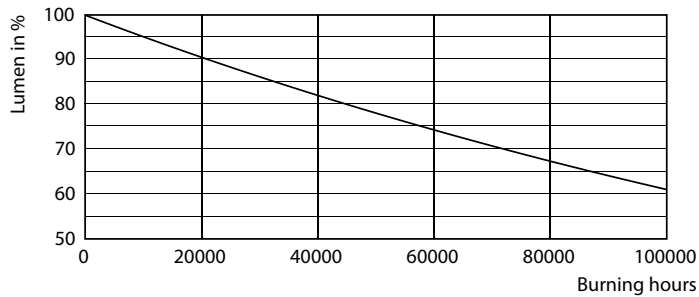
Life Expectancy Diagram - 14T8 PRO LED/48-3000 IF G 10/1

Lumen Maintenance Diagram - 14T8 PRO LED/48-3000 IF G 10/1



Life Expectancy Diagram - 14T8 PRO LED/48-3000 IF G 10/1

Life Expectancy Diagram - 14T8 PRO LED/48-3000 IF G 10/1



Lumen Maintenance Diagram - 14T8 PRO LED/48-3000 IF G 10/1

CorePro LEDtube InstantFit T8

