



T8

8T8 LED/24-3000 IF EasySmart 1PK 10/1

Our TLEDs are available in InstantFit (Type A / Type C) or MainsFit (Ballast bypass / Type B) versions. The InstantFit lamps work on a broad variety of ballasts and LED drivers. Only InstantFit has over 15,000 lamp & ballast combinations delivering even light output, energy savings and a long lifetime. Our MainsFit products feature a double-ended design, simplifying installation while a proprietary safety circuit minimizes a shock risk. Lamp sizes range from 2-foot to 8-foot and U-bend with a variety of lumen outputs.

Product data

General Information	
Cap-Base	G13 [Medium Bi-Pin Fluorescent]
Nominal lifetime	50,000 hour(s)
Switching Cycle	50,000
Lighting Technology	LED
EU RoHS compliant	Yes
Light Technical	
Color Code	830 [CCT of 3000K]
Beam Angle (Nom)	160 degree(s)
Luminous Flux	1,150 lm
Color Designation	White (WH)
Correlated Color Temperature (Nom)	3000 K
Luminous Efficacy (rated) (Nom)	143.75 lm/W
Color Consistency	<6
Color rendering index (CRI)	80
LLMF At End Of Nominal Lifetime (Nom)	70 %
Operating and Electrical	
Line Frequency	40000-85000 Hz

Input Frequency	40000-85000 Hz
Power Consumption	8 W
Lamp Current (Max)	280 mA
Lamp Current (Min)	70 mA
Starting Time (Nom)	0.5 s
Warm-up time to 60% light	0.5 s
Power Factor (Fraction)	0.9
Voltage (Nom)	200-380 V
Temperature	
Ambient temperature range	-4 °F to 113 °F
T-Case Maximum (Nom)	95 °F
Controls and Dimming	
Dimmable	Wireless Dim
Mechanical and Housing	
Product Length	23-5/8 inch
Bulb Shape	Tube, double-ended

Approval and Application

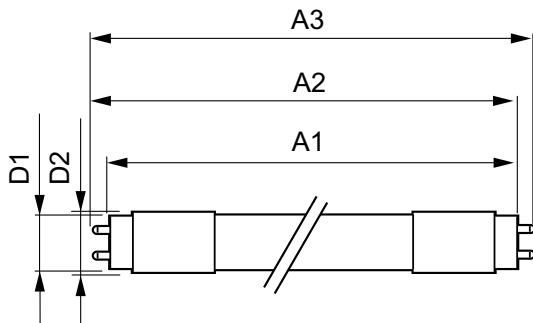
Energy Saving Product	Yes
Approval Marks	UL certificate RoHS compliance
Energy Consumption kWh/1000 h	- kWh

Product Data

Order product name	8T8 LED/24-3000 IF EasySmart 1PK
Full product name	8T8 LED/24-3000 IF EasySmart 1PK 10/1

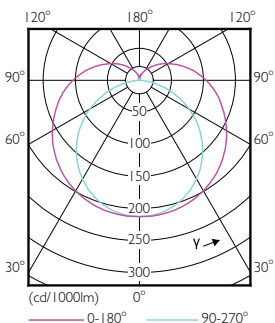
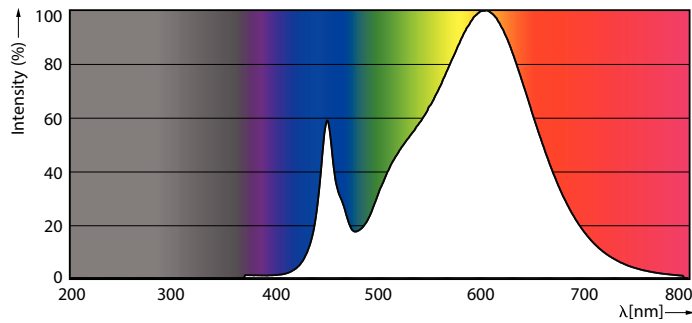
Order code	474056
Material Nr. (12NC)	929001398404
Numerator - Quantity Per Pack	1
EAN/UPC - Product/Case	046677474058
Numerator - Packs per outer box	10
EAN/UPC - Case	50046677474053

Dimensional drawing



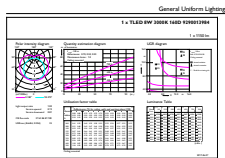
Product	D1	D2	A1	A2	A3
8T8 LED/24-3000 IF EasySmart 1PK	25.6 mm	27.8 mm	588.6 mm	595.7 mm	602.8 mm

Photometric data



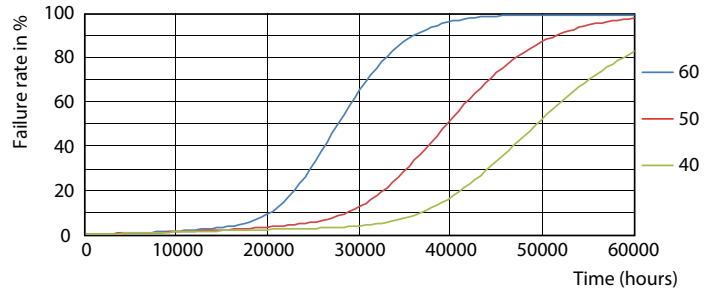
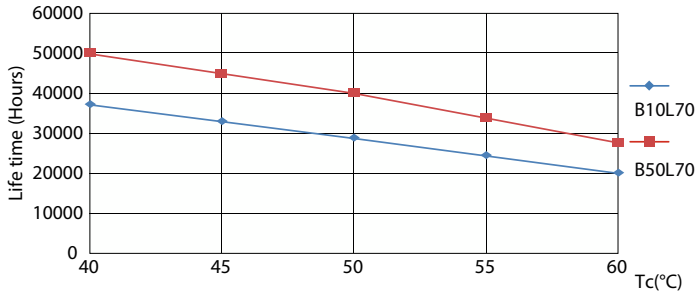
Spectral Power Distribution Colour - 8T8 LED/24-3000 IF EasySmart 1PK

Light Distribution Diagram - 8T8 LED/24-3000 IF EasySmart 1PK

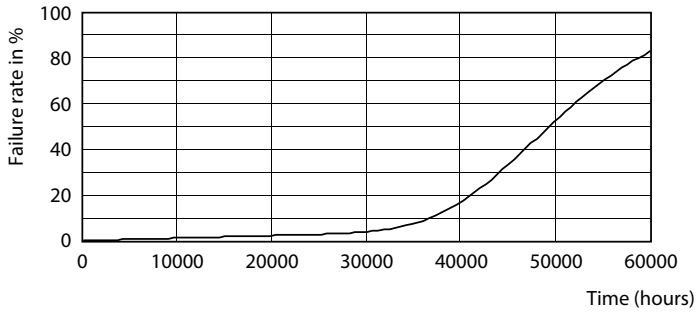


General uniform lighting - 8T8 LED/24-3000 IF EasySmart 1PK

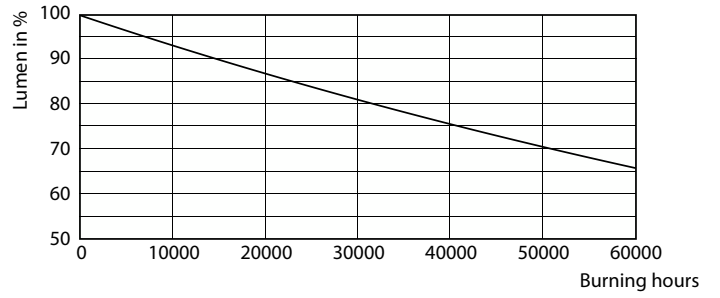
Lifetime



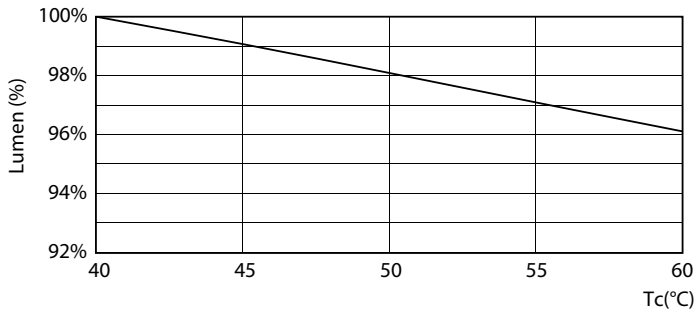
Life Expectancy Diagram - 8T8 LED/24-3000 IF EasySmart 1PK



Life Expectancy Diagram - 8T8 LED/24-3000 IF EasySmart 1PK



Life Expectancy Diagram - 8T8 LED/24-3000 IF EasySmart 1PK



Lumen Maintenance Diagram - 8T8 LED/24-3000 IF EasySmart 1PK

Lumen Maintenance Diagram - 8T8 LED/24-3000 IF EasySmart 1PK

