



# MASTER LEDtube EM/ Mains T8

## MAS LEDtube 1200mm 17W 865 T8 I W G

The Philips MASTER LEDtube integrates a LED light source into a traditional fluorescent form factor. Its unique design creates a perfectly uniform visual appearance, which cannot be distinguished from traditional fluorescent. These T8 LED tubes are the right choice for absolute performance and are designed to stand up to everyday conditions. Unparalleled savings thanks to low energy consumption and an exceptionally long lifetime ensure this tube masters every demanding application.

### Warnings and Safety

- NOTE: The overall energy efficiency and light distribution of any installation that uses these lamps will be determined by the design of the installation.

### Product data

General Information	
Cap-Base	G13 [Medium Bi-Pin Fluorescent]
Nominal lifetime	50,000 hour(s)
Switching Cycle	50,000
Lighting Technology	LED
EU RoHS compliant	Yes

Light Technical	
Color Code	865 [CCT of 6500K]
Luminous Flux	2,100 lm
Correlated Color Temperature (Nom)	6500 K
Color Consistency	<6
Color rendering index (CRI)	80

LLMF At End Of Nominal Lifetime (Nom) 70 %	
--	--

Operating and Electrical	
Line Frequency	50 to 60 Hz
Input Frequency	50 to 60 Hz
Power Consumption	17 W
Lamp Current (Max)	135 mA
Lamp Current (Min)	60 mA
Starting Time (Nom)	0.5 s
Warm-up time to 60% light	0.5 s
Power Factor (Fraction)	0.9
Voltage (Nom)	120-277 V

# MASTER LEDtube EM/Mains T8

## Temperature

Ambient temperature range	-20 °C to 45 °C
T-Case Maximum (Nom)	60 °C

## Controls and Dimming

Dimmable	No
----------	----

## Mechanical and Housing

Product Length	1,200 mm
----------------	----------

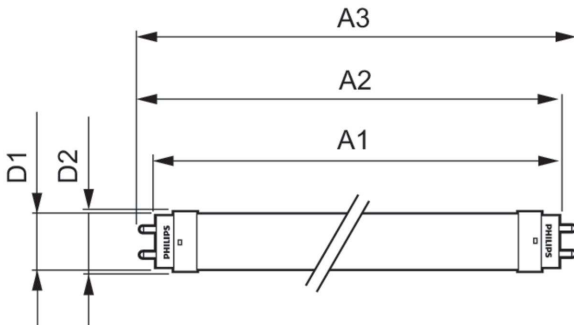
## Approval and Application

Energy Saving Product	Yes
Approval Marks	UL certificate RoHS compliance KEMA Keur certificate

## Product Data

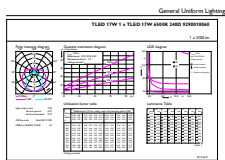
Order product name	MAS LEDtube 1200mm 17W 865 T8 I W G
Full product name	MAS LEDtube 1200mm 17W 865 T8 I W G
Full product code	871869676064200
Order code	929001806012
Material Nr. (12NC)	929001806012
Numerator - Quantity Per Pack	1
EAN/UPC - Product/Case	8718696760642
Numerator - Packs per outer box	10
EAN/UPC - Case	8718696760659

## Dimensional drawing

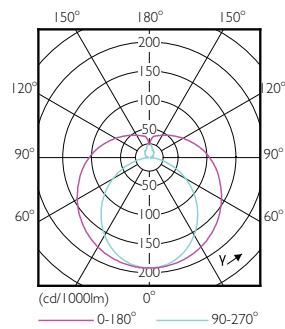


Product	D1	D2	A1	A2	A3
MAS LEDtube 1200mm 17W 865 T8 I W G	25.7 mm	28 mm	1,198 mm	1,205 mm	1,212 mm

## Photometric data



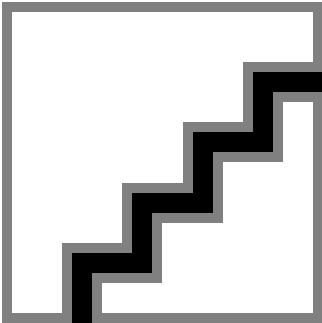
General uniform lighting - MAS LEDtube 1200mm 17W 865 T8 I W G



Light Distribution Diagram - MAS LEDtube 1200mm 17W 865 T8 I W G

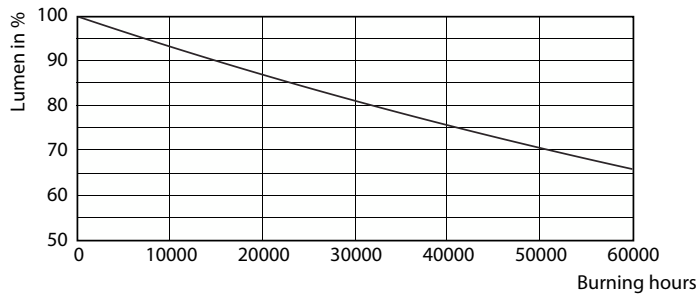
# MASTER LEDtube EM/Mains T8

## Photometric data



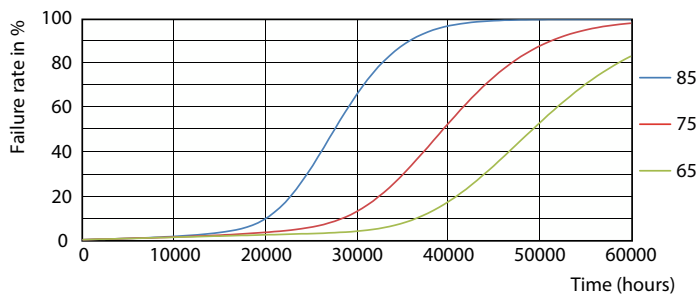
Spectral Power Distribution Colour - MAS LEDtube 1200mm 17W 865 T8 I W G

## Lifetime



Lumen Maintenance Diagram - MAS LEDtube 1200mm 17W 865 T8 I W G

Lumen Maintenance Diagram - MAS LEDtube 1200mm 17W 865 T8 I W G

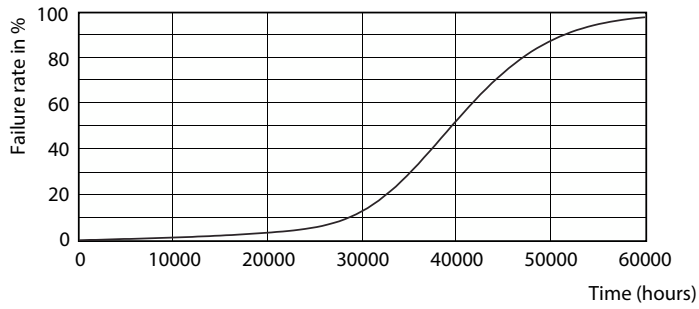


Life Expectancy Diagram - MAS LEDtube 1200mm 17W 865 T8 I W G

Life Expectancy Diagram - MAS LEDtube 1200mm 17W 865 T8 I W G

# MASTER LEDtube EM/Mains T8

## Lifetime



Life Expectancy Diagram - MAS LEDtube 1200mm 17W 865 T8 I W G

