



MASTER LEDtube Mains T5



MASTER LEDtube 1500mm HE 20W 840 T5 EU

The new Philips Master LEDtube Mains T5 brings simplicity to your lighting project. You don't need to pay attention to the driver technology anymore. Thanks to a unique design, Philips MASTER LEDtube Mains T5 installs in luminaires operating on mains power connection. So simple to operate! . Perfectly safe, reliable & easy to install, the Philips MASTER LEDtube Mains T5 is the ideal alternative to standard fluorescent tubes to maximise value over lifetime with high energy savings and lower maintenance costs.

Product data

General Information	
Cap base	G5
Nominal lifetime	50,000 h
Switching Cycle	200,000
Lighting Technology	LED
Flux measurement reference	Sphere
CE mark	Yes
EU RoHS compliant	Yes
Light Technical	
Colour Code	840 [CCT of 4000K]
Beam angle (nom.)	200 degree(s)
Luminous Flux	3,000 lm
Colour designation	Cool White (CW)
Correlated Colour Temperature	4000 K
Luminous efficacy (rated) (nom.)	150 lm/W
Colour consistency	<6
Colour rendering index (CRI)	80

LLMF at end of nominal lifetime (nom.)	70 %
Flickering value (PstLM)	1
Stroboscopic effect	0.4
Photobiological safety according to EN 62471	RG0
Operating and Electrical	
Line Frequency	50 to 60 Hz
Input frequency	50 to 60 Hz
Power Consumption	20 W
Lamp current (nom.)	99 mA
Starting time (nom.)	0.5 s
Warm-up time to 60% light	0.5 s
Power Factor (Fraction)	0.9
Voltage (nom.)	220-240 V
LED alternative to fluorescent lamp power	35 W
Inrush current at mains	7
Max. lamp no. on MCB B type 10A — Mains	63

MASTER LEDtube Mains T5

Max. lamp no. on MCB B type 10A — EM ballast without Comp. Cap.	-
Max. lamp no. on MCB B type 10A — EM ballast with Comp. Cap.	-
Max. lamp no. on MCB B type 16A — Mains	100
Max. lamp no. on MCB B type 16A — EM ballast without Comp. Cap.	-
Max. lamp no. on MCB B type 16A — EM ballast with Comp. Cap.	-
Ballast Compatibility	Mains

Temperature

Ambient temperature range	-20 to +45 °C
T-Case maximum (nom.)	55 °C

Controls and Dimming

Dimmable	No
----------	----

Mechanical and Housing

Lamp Finish	Frosted
Bulb material	Glass
Product length	1,500 mm
Bulb shape	T5

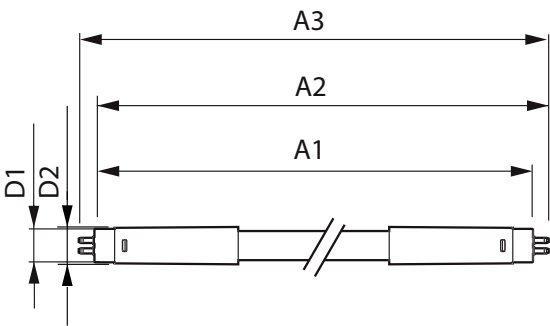
Approval and Application

Energy Efficiency Class	D
Energy-saving product	Yes
Approval marks	RoHS compliance TUV CE marking KEMA Keur certificate
Energy consumption kWh/1,000 hours	20 kWh
EPREL registration number	1476404

Product Data

Order product name	MAS LEDtube 1500mm HE 20W 840 T5 EU
Full product name	MASTER LEDtube 1500mm HE 20W 840 T5 EU
Full EOC	871951433439700
Order code	33439700
Material no. (12 NC)	929002421302
SAP numerator – quantity per pack	1
EAN/UPC — Product/Case	8719514334397
Numerator – packs per outer box	10
EAN/UPC – Case	8719514334403

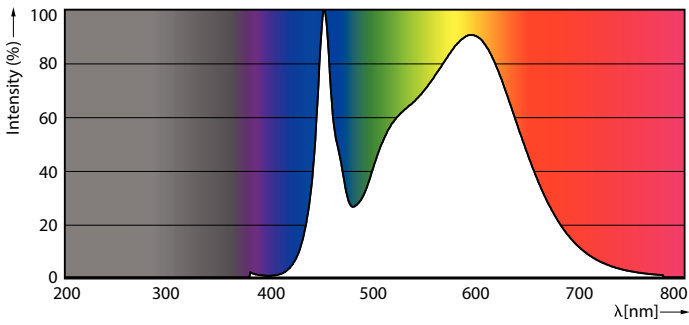
Dimensional drawing



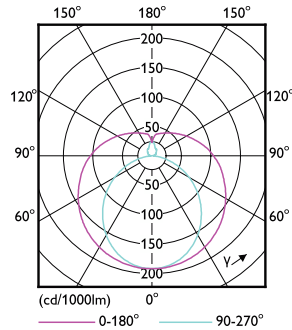
Product	D1	D2	A1	A2	A3
MAS LEDtube 1500mm HE 20W 840 T5 EU	15.7 mm	19 mm	1,449 mm	1,456.1 mm	1,463.2 mm

MASTER LEDtube Mains T5

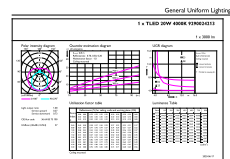
Photometric data



Spectral Power Distribution Colour - MAS LEDtube 1500mm HE 20W 840 T5 EU



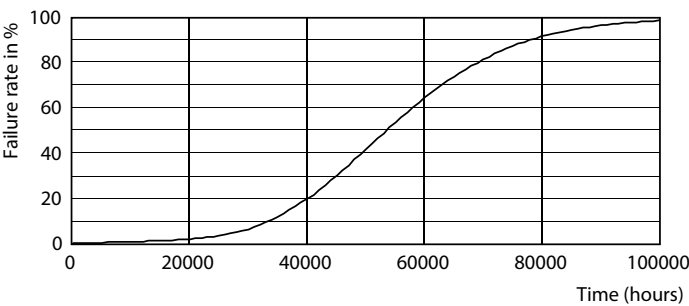
Light Distribution Diagram - MAS LEDtube 1500mm HE 20W 840 T5 EU



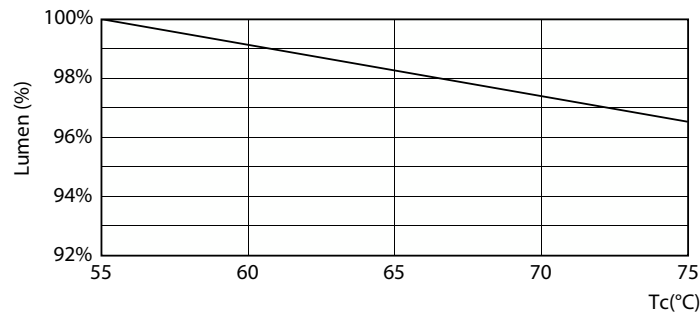
General Uniform Lighting

General uniform lighting - MAS LEDtube 1500mm HE 20W 840 T5 EU

Lifetime



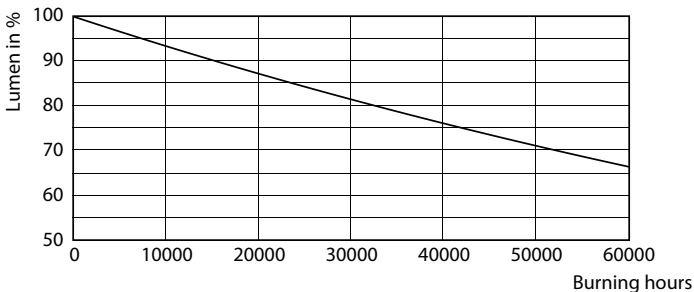
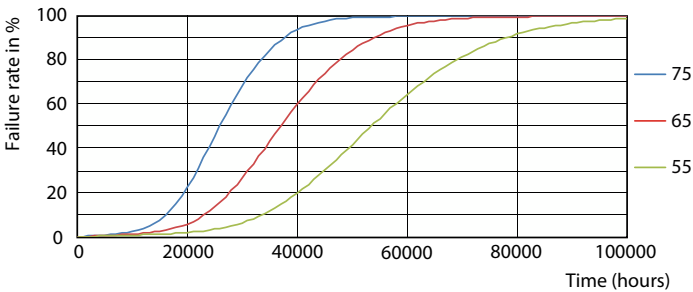
Life Expectancy Diagram - MAS LEDtube 1500mm HE 20W 840 T5 EU



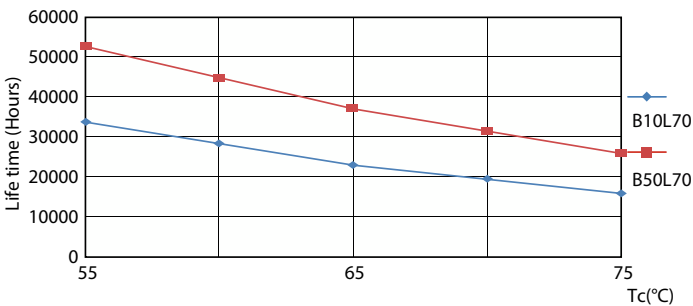
Lumen Maintenance Diagram - MAS LEDtube 1500mm HE 20W 840 T5 EU

MASTER LEDtube Mains T5

Lifetime



Life Expectancy Diagram - MAS LEDtube 1500mm HE 20W 840 T5 EU



Lumen Maintenance Diagram - MAS LEDtube 1500mm HE 20W 840 T5 EU

Life Expectancy Diagram - MAS LEDtube 1500mm HE 20W 840 T5 EU

