



MASTER Value GLASS LED candles and lustres

MASTER VLE LEDLusterD3.4-40W E27 P45 927CLG

MASTER Value Glass LED lustres feature a classic heritage design, these filament LED lamps combine the familiar shapes of incandescent candles and lustres with the benefits of long-lasting LED technology. These glass LED lustres offer more energy savings than normal LED candles and lustres. At the same time, they also provide customers with a good light experience, enhanced by excellent dimming performance (dimmable LED candles). MASTER Value Glass LED lustres deliver significant energy savings, using 30% less energy compared to normal glass LED candles and provide excellent quality of light. By offering a lifetime of 15,000 hours, these dimmable LED candles and lustres also reduce maintenance costs.

Product data

General Information			
Cap base	E27	Colour designation	Warm White (WW)
Nominal lifetime	15,000 h	Correlated Colour Temperature	2700 K
Switching Cycle	20,000	Luminous efficacy (rated) (nom.)	138.00 lm/W
Lighting Technology	LED	Colour consistency	<6
Flux measurement reference	Sphere	Colour rendering index (CRI)	90
CE mark	Yes	LLMF at end of nominal lifetime (nom.)	70 %
EU RoHS compliant	Yes	Flickering value (PstLM)	1
		Stroboscopic effect	0.4
		Photobiological safety according to EN 62471 RGO	
Light Technical		Operating and Electrical	
Colour Code	927 [CCT of 2700K]	Line Frequency	50 to 60 Hz
Luminous Flux	470 lm		

MASTER Value GLASS LED candles and lustres

Input frequency	50 to 60 Hz
Power Consumption	3.4 W
Lamp current (nom.)	20 mA
Wattage equivalent	40 W
Starting time (nom.)	0.5 s
Warm-up time to 60% light	0.5 s
Power Factor (Fraction)	0.7
Voltage (nom.)	220-240 V

Temperature

T-Case maximum (nom.)	80 °C
-----------------------	-------

Controls and Dimming

Dimmable	Only with specific dimmers
----------	----------------------------

Mechanical and Housing

Lamp Finish	Clear
Bulb shape	P45

Approval and Application

Energy Efficiency Class	D
-------------------------	---

Energy consumption kWh/1,000 hours	4 kWh
EPREL registration number	574373
EyeComfort	Yes

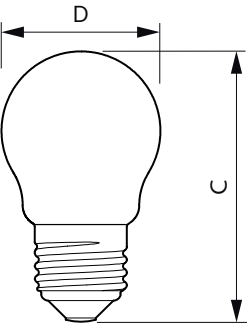
Application Conditions

Can it be used in closed luminaires	No
-------------------------------------	----

Product Data

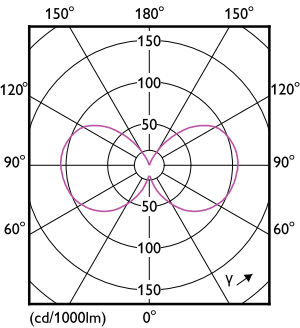
Order product name	MAS VLE LEDLusterD3.4-40W E27 P45 927CLG
Full product name	MASTER VLE LEDLusterD3.4-40W E27 P45 927CLG
Full EOC	871951435551400
Order code	35551400
Material no. (12 NC)	929003060402
SAP numerator – quantity per pack	1
EAN/UPC – Product/Case	8719514355514
Numerator – packs per outer box	10
EAN/UPC – Case	8719514355521

Dimensional drawing

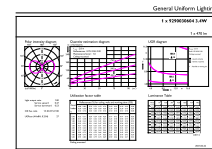


Product	D	C
MAS VLE LEDLusterD3.4-40W E27 P45 927CLG	45 mm	78 mm

Photometric data



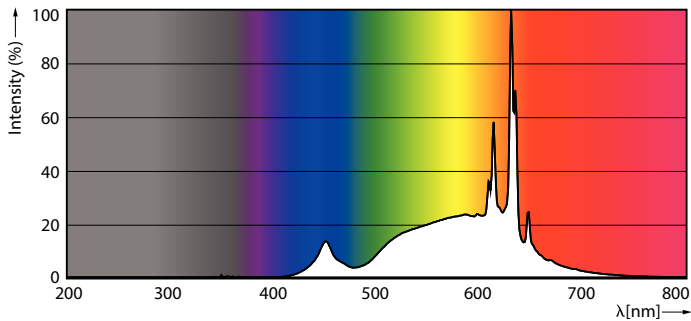
Light Distribution Diagram – MAS VLE LEDLusterD3.4-40W E27 P45 927CLG



General uniform lighting – MAS VLE LEDLusterD3.4-40W E27 P45 927CLG

MASTER Value GLASS LED candles and lustres

Photometric data

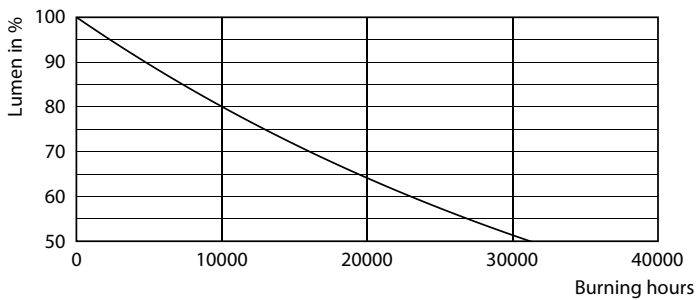


Spectral Power Distribution Colour - MAS VLE LEDLusterD3.4-40W E27 P45 927CLG

Lifetime



Life Expectancy Diagram - MAS VLE LEDLusterD3.4-40W E27 P45 927CLG



Lumen Maintenance Diagram - MAS VLE LEDLusterD3.4-40W E27 P45 927CLG

