

**PHILIPS
LIGHTOLIER**



Downlighting

Comprehensive
product offering

Exceeding expectations
in innovation, versatility,
and performance

2018 product offering

Our lighting story

Exceeding expectations

The Philips Lightolier downlight product offering provides over sixty years of continuous innovation and market leadership. Versatility is at the core of any lighting solution, with a selection of thousands of options, our downlights complement any stylistic theme and also integrate effectively into decorative, track, and indirect lighting schemes. Our complete downlight offering allows you to easily find the perfect lighting solution to complete any project and provides your customer with the best lighting.

Contents

2 Choosing a solution How it all works	3 A versatile offering Lighting for every need	4 Lighting performance Energy efficiency	5 Lighting effects Basic lighting techniques
6 Making your selection LED, INC & CFL sources	8 LED luminaires round and square apertures	11 LED flat downlight 4" & 6" round / square apertures	12 LED retrofit downlight 4" & 5/6" round apertures
13 CorePro LED 4", 5" & 6" round apertures	14 LED surface-mount downlight 5" & 7" round apertures	15 SlimSurface LED 5", 7" & 10" round and 4" & 6" square apertures	16 LyteCaster LED 4", 5" & 6" round apertures
18 LyteCaster LED adjustable 4", 5" & 6" round apertures	20 LyteCaster LED accent 3" round apertures	21 LyteProfile LED 4" & 6" round apertures	22 Calculite LED 1.75", 3", 4", 6" & 7" round/square apertures
24 CFL & INC luminaires round and square apertures	26 LytePoints 3 3/4" round and square apertures	36 Lytecaster 3 3/4", 5 1/4", 6 3/4" round apertures	42 LyteCaster performance 5 1/4", 6 3/4" round apertures
44 C Plus 4", 6" round apertures	48 Accessories All products	50 Lamp compatibility Conventional to LED sources	51 Resources All products

Choosing a solution

How it all works

Philips Lightolier downlights meet the need for efficient and well-controlled lighting in residential and light commercial applications and offer the broadest choice in fixture appearance and performance.



LED downlights consist of mounting frames, light engines and reflector trims.

Mounting frames provide mounting and electrical hardware. Each is designed for a specific lighting need and installation condition.

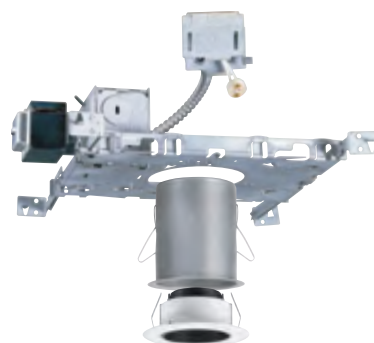
Light engines deliver lighting effects: general lighting, wall washing, and accent lighting. They allow for expressive lighting options by combining functional illumination and color temperatures.

Reflector trims attach to light engines and are interchangeable. We offer a wide selection of coordinated aperture finishes and styles for use in basic residential to commercial projects.

LED integrated luminaires consist of thin downlighting solutions without the traditional frame, trim and reflector.

Perfect for shallow ceilings and where installing a traditional downlight is a challenge. These versatile downlight solutions are also suitable to be used in wet locations, so adding light where you need it is quick, easy and possible.

All integrated downlights are dimmable and have a optics/frosted diffuser that helps control light glare for a more comfortable light output.



Compact Fluorescent (CFL) and Incandescent (INC) downlights consist of mounting frames and reflector trims.

Mounting frames provide mounting and electrical hardware. Each is designed for a specific lighting need and installation condition.

Reflector trims deliver lighting effects: general lighting, wall washing, and accent lighting. They allow for expressive lighting options and are interchangeable. We offer a wide selection of coordinated aperture finishes and styles for use in basic residential to commercial projects.

A versatile offering

Lighting sources for every application

Lighting sources can either correspond to warm or cool Correlated Color Temperatures (CCTs). Warm CCTs are ideal for most residential applications and cooler CCTs are ideal where generous amounts of daylight are present. A neutral tone is popular for retail locations and other consumer-oriented spaces. In all cases, “color rendering” is a key determining factor in lighting application.



Light Emitting Diodes (LED)

These sources provide the longest life and highest energy efficiency. LED solutions are suited to a multitude of applications. LED sources are the ideal choice when energy conservation and low maintenance costs are prime considerations. They offer comparable color rendering to conventional incandescent lighting sources and most allow dimming capability.



Compact Fluorescent (CFL)

These sources consume one-half to one-third the power of comparable incandescent downlights and last ten times longer. In our product offerings the effect is often indistinguishable from incandescent sources. In addition, ballast technology has improved and offers “rapid start” and “instant-on” technology, eliminating flickering when starting. Although “self-ballasted” lamps are available (and often are promoted for retrofit installations), for best output efficiency and glare control, use dedicated downlights with separate ballasts designed for CFL lamps.



Incandescent (INC)

These sources are used when familiar color rendering and easy dimming are priorities. Color ranges from the warm, friendly tones of conventional incandescent to the cool and crisp effect of tungsten halogen.

Reflectorized lamp types (such as PAR & BR lamps) allow for controlled light distribution, lending themselves well to, concentrated downlighting, wall washing and accent lighting.

Most reflectorized lamps also feature longer lives than “A” lamps, making them more suitable for difficult to access locations. “A” lamps produce smooth, soft-edged beams that are ideal for general lighting and their short profile assists in creating glare-free illumination.

Low-voltage sources offer similar choices in color tone and are readily dimmable, provided that special equipment is used. MR & PAR lamps provide control over beam distribution, making them particularly useful for dramatic, high-impact accent lighting.



Lighting performance

Reflector finishes

Philips Lightolier offers over 200 different downlighting trim configurations combining finish and flange options (below) and luminaire types (next page). The following is just a quick visual guide of only some of the options to assist you in determining some of the best finish options for your lighting needs (for exact finish and flange options see specific product page).



Specular Clear

Crisp, clean appearance and excellent light output. Works well with “cool” colored interiors.



White Step Baffle

Provides excellent light output with low brightness. White finish blends into the ceiling when luminaires are “off” and softens shadows when “on”.



Specular Gold

Rich luster and excellent light output. Works well with “warm” colored interiors and woods.



Black Step Baffle

Offers good light output with maximum glare control. Assures a comfortable, glare-free aperture that keeps attention focused on the space.



Specular Black

Contemporary appearance. Ideal for accent lighting since it appears “off” even when it’s “on.” The ultimate low brightness downlight.



Brushed Gold (or Satin Gold)

Provides a soft aperture brightness. Prominent appearance works well with traditional interiors and “warms” the light.



Clear Diffuse

Soft, clean appearance provides excellent output and low maintenance. Upgrade from standard white step baffle.



Brushed Clear

Contemporary “etched” appearance provides a soft aperture brightness. Matches popular hardware finish.



Comfort Clear Diffuse

Semi-specular finish that softens the light at the source of the reflector and creates a subtle, even luminance from the reflector cone.



Matte White

Offers an architectural, built-in appearance that softly blends into the ceiling and smooths the light beam.



Champagne Bronze

Semi-specular finish that softens the light at the source of the reflector while providing a warmer reflector appearance (light output is slightly warmer).



Natural Metal

Unique anodized flange enhances natural metal texture. Excellent addition to rooms with stainless appliances and accents.

Lighting effects

Basic lighting techniques

Effective downlighting generally combines the following elements in an unobtrusive array of fixtures.

- Achieve high amounts of general illumination in a space with ambient lighting.
- Highlighting walls with smooth, tactile or reflective textures with “grazing” or wall wash lighting.
- Focus on specific objects, architectural features or areas where tasks are performed with accent lighting.
- Illuminate moisture rich environments (showers, spas, restrooms, etc.) using wet location rated lighting.



Ambient lighting (general)

Provides overall visibility while defining a space, allowing for safe and comfortable movement. A good application of ambient lighting is free from glare, spaced in a comfortable pattern and evenly distributed. Aperture size and finish are affected by the light source and the design and scale of the space.



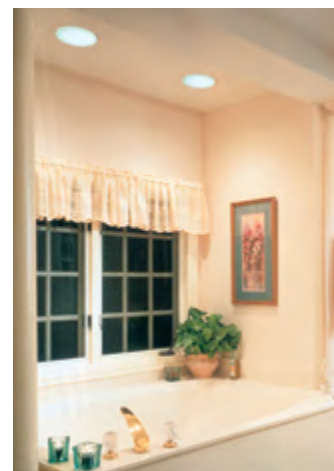
Wall Wash lighting (grazing)

Provides a smooth, even field of illumination over a wall. Grazing enhances textures and is achieved with concentrated beams of light (works with reflective surfaces). To apply an even gradient of brightness place wall wash fixtures 24"–36" from walls and equal distances apart. This enhances the sense of spaciousness and minimizes wall texture. Specific optics distribute light evenly across and along the vertical surface and counteract “scallops” at the top of the wall.



Accent lighting (task)

Provides dramatic interest and draws the eye by directing concentrated light and thus extra attention to selected objects and surfaces. Accenting should be selective: if too many objects or areas are emphasized, little stands out. Typically this is accomplished with adjustable downlights whose beams can be aimed. “Reflectorized” lamps (PAR, BR, R, or MR) deliver the concentrated beams; arrange them so they blend in with the pattern of ambient and wall lighting.



Wet location lighting (damp/wet)

Provides overall illumination in locations where the light source may come into direct contact with water or where a lens is required. These products are usually enclosed and provide proper illumination in showers, closets, food preparation areas, or to eliminate exposure of the light source.



Ambient lighting



Specular reflectors
Aperture cones
Sloped ceilings
Cross blades
Pinholes
Baffles



Wall Wash lighting



Open downlights
Step baffle eyelids
Basic white eyelids



Accent lighting



Adjustables
Mini swivels
Pinholes
Eyeballs
Elbows
Slots

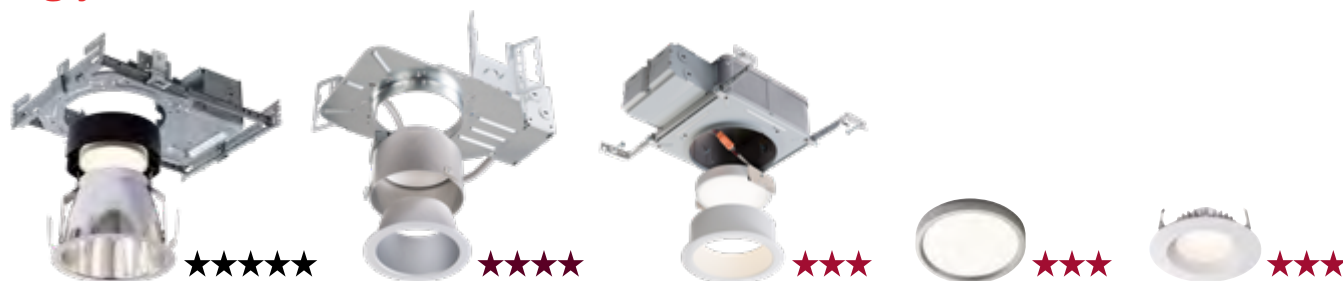


Wet location lighting



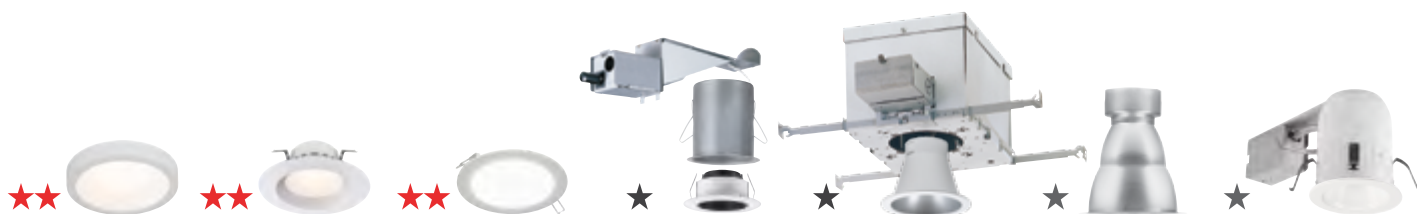
Decorative domes
Lensed downlights
Plastic diffusers

Making your selection



	Specification LED downlights	Performance LED downlights	Value LED downlights		
	Calculite	LyteProfile	LyteCaster	SlimSurface	CorePro
Apertures	Round: 1.75", 3", 4", 6", 7" Square: 1.75", 4", 6"	Round: 4", 6"	Round: 3", 4", 5", 6" Squares: 4", 5", 6"	Round: 5", 7", 10" Square: 4", 6"	Round: 4", 5", 6"
Lumens or lamps	400, 500, 1000, 1500, 2000, 2500, 3000, 3500, 4800, 6000	1000, 1500, 2000, 2500	650, 800, 1000, 1500, 2000	650, 1000, 2200	4": 750, 800, 850 5": 900, 950, 1000 6": 850, 1000, 1200, 1250
CCTs	2700, 3000, 3500, 4000	2700, 3000, 3500, 4000	2700, 3000, 3500, 4000	2700, 3000, 3500, 4000	3000, 4000
CRIs	80, 90	80	80, 90	80, 90	80, 90
Housings	New Constuction (IC/Non-IC) Remodeler (IC)	New Constuction (IC/Non-IC)	New Contruction (IC/Non-IC) Remodeler (IC)	—	—
Plenums	Depth varies (consult spec sheet)	4½" depth	3½", 5⅜" depths	4½" depth	—
Dimming	Z10V, Lutron, DALI, EldoLED ELV 120V, Tunable White, PoE	Z10V, Lutron, Tunable White	Z10V, ELV 120V	Z10V, ELV & TRIAC 120V	TRIAC 120V
Options	Emergency, 120/277V, Chicago Plenum, 347V	Emergency, 120/277V, Chicago Plenum, 347V	Warm glow effect: 5" (WG) CrispWhite: 3" Accents	—	—
Styles	Downlight (round & square decorative elements also available) Adjustable accent Wall wash (single, double, corner) Shower light** Vandal-proof Cylinder & Sloped ceiling	Downlight Wall wash Sloped ceiling**	3" only: 4", 5", 6": Gimbal Downlight Pinhole Baffle Wall wash Sloped ceiling** Shower light Downlight accent Adjustable accent	Downlight Shower light	Downlight
Finishes	Specular clear Comfort clear Comfort clear diffuse Champagne bronze White* & Black*	Clear Comfort clear Clear diffuse White*	Clear diffuse Chrome (3" only) Aluminum* (3" only) Black* (3" only) White*	White* Black* Aluminum* Metal (10" only)	White*
Applications	Architectural, Commercial High-end residential	Commercial VE (alternative to Calculite LED)	Light commercial Residential & Hospitality	Residential Hospitality	Residential Hospitality
Cut-off angle	Best 45°	Better 60°	Good 60-70°	—	—
cULus listing	Wet locations	Wet locations	Wet locations (downlights) Damp locations (accents)	Wet locations (ceiling-mount) Damp locations (wall-mount)	Wet locations
Certifications	ENERGY STAR® RoHS, CCEA, IP65, IBEW	ENERGY STAR®	ENERGY STAR® Airseal	ENERGY STAR®	ENERGY STAR®
Rated life	60,000 hrs (L90)	50,000 hrs (L70)	50,000 hrs (L70)	50,000 hrs (L70)	50,000 hrs (L70)
Warranty	Standard 5-year limited	Standard 5-year limited	Standard 5-year limited	Standard 5-year limited	Standard 5-year limited

For more information on the complete Philips Lightolier product offering visit www.philips.com/lightolier or contact your local Philips representative.



Budget LED downlights			Budget INC downlights		Budget CFL downlights	
Surface-mount	Retrofit	Flat	LytePoints	Lytecaster	Lytecaster Performance	C Plus
Round: 5", 7"	Round: 4", 5/6"	Round: 4", 6" Square: 4", 6"	Round: 3 3/4" Squares: 3 3/4"	Round: 3 3/4", 5 1/4", 6 3/4"	Round: 5 1/4", 6 3/4"	Round: 4", 6"
600, 1000	900, 1400	700, 900	—	—	Quad Tube Triple Tube 13, 18, 26, 32, 42W	—
3000	3000	3000	—	—	—	—
90	90	90	—	—	—	—
New Const. (IC/Non-IC) Remodeler (IC)	New Const. (IC/Non-IC) Remodeler (IC)	New Const. (IC/Non-IC) Remodeler (IC)	New Construction (IC/Non-IC) Remodeler (IC)		New Const. (IC/Non-IC) Remodeler (IC)	New Const. (IC/Non-IC) Remodeler (IC)
1" depth	3" depth	1" depth	4 1/2" depth	4 1/2" depth	4 1/2" depth	XXX
ELV & TRIAC 120V	ELV & TRIAC 120V	ELV & TRIAC 120V	—	—	—	—
—	—	—	—	—	—	—
Downlight	Downlight	Downlight		Cone Baffle Eyeball Eyelid Slope Splay Pinhole Adjustable Basic refl. Mini-swivel Shower light Wall wash Cross blade Lensed	Downlight Wall wash (single) Wall wash (double) Cross blade Lensed	Cone Baffle Eyeball Splay Shower light Lensed
White*	White*	White*	—	—	—	—
Residential Hospitality	Residential Hospitality	Residential Hospitality	Residential Hospitality	Light commercial Residential, Hosp	Light commercial Residential, Hosp.	Residential Hospitality
—	—	—				
Wet locations (ceiling-mount)	Wet locations	Wet locations	Wet locations	Wet locations	Wet locations	Wet locations
ENERGY STAR®, T24, Airseal, RoHS, IC rated			ENERGY STAR®	ENERGY STAR® Airseal	ENERGY STAR® Airseal	ENERGY STAR®
50,000 hrs (L70)	42,000 hrs (L70)	50,000 hrs (L70)				
Std. 5-year limited	Std. 5-year limited	Std. 5-year limited	Standard 5-year limited		Std. 3-year limited	Std. 3-year limited

For more information on the complete Philips Lightolier product offering visit www.philips.com/lightolier or contact your local Philips representative.

* White, Black and Aluminum are all painted matte finishes.

LED luminaires



We offer a wide array of downlight luminaires to fit any of your project needs: from retail to residential to commercial.

As the LED technology continues to evolve, Philips Lightolier integrated LED downlight luminaires are more energy efficient and versatile than ever before. From general and accent lighting to wall wash and wet location lighting, there are a variety of product families to choose from that can provide the right lighting for the right application, all with the trusted Philips Lightolier quality.

All LED downlight luminaires feature a substantial rated lifetime at 70% lumen maintenance along with a 5-year limited warranty. All product families are UL Listed and most configurations comply with ENERGY STAR® and/or California's Title 24 certifications. Many luminaires offer multiple finish and flange options.



pg. 11

Flat

round & square aperture downlights



pg. 16

LyteCaster

round & square aperture downlights



pg. 12

Retrofit

round aperture downlights



pg. 18

LyteCaster adjustable

round aperture downlights



pg. 13

CorePro

round aperture downlights



pg. 20

LyteCaster accent

round & square aperture downlights



pg. 14

Surface-mount

round aperture downlights



pg. 21

LyteProfile

round aperture downlights



pg. 15

SlimSurface

round & square aperture downlights



pg. 22

Calculite

round & square aperture downlights



Budget LED downlighting

Flat

round & square aperture downlights

Bring new depth to your designs

Provides an easy and quick downlight solution without the traditional frame, reflector and trim. Perfect for installation in existing ceilings or new construction with the benefits of energy saving LED technology.



Features

- Sizes: 4" & 6" round and 4" & 6" square
- Efficacy: up to 60lm/w
- Lumens: 700-900lm
- Wattage: 12W (4"), 15W (6")
- Voltage: 120V (50/60Hz)
- CRI: 90 min.
- CCT: 3000K
- Dimming: ELV/TRIAC (10%)
- Lifetime: 50,000 hour (L70)

Round luminaire



example: FD4R07930TE1W

Square luminaire



example: FD6S09930TE1W

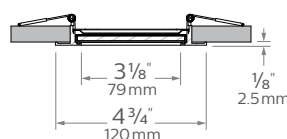
Luminaire

Series	Size	Shape	Lumens	CRI	CCT	Dimming	Voltage	Finish
FD				9	30	TE	1	W
FD Flat Downlight	4 4-inch	R Round S Square	07 700lm	9 90	30 3000K	TE Triac & ELV	1 120V	W White (matte)
	6 6-inch	R Round S Square	09 900lm					

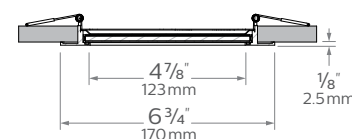
Accessories

Series	Model
FD	
FD Flat Downlight	RN Round new construction plate SN Square new construction plate 06C 6' extension cable 20C 20' extension cable

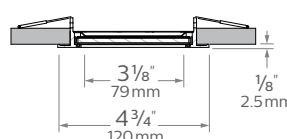
Round 4" aperture



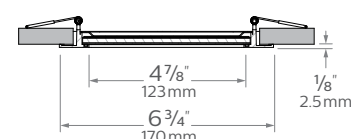
Round 6" aperture



Square 4" aperture



Square 6" aperture



Certifications: IC rated for direct contact with thermal insulation.
Title 24, cULus listed (UL 1598) for wet locations (covered ceiling only).
RoHS compliant, ENERGY STAR® and AirSeal for minimal air leakage.



Retrofit

round aperture downlights

LED retrofit in a snap

Installation that is super easy and will save you lots of time and frustration on the job site. You will love how hassle-free this LED downlight is, with a quick connect plug and medium base socket adapter included, you may not even need to open your toolbox. This is an affordable solution for new construction or remodelling.



Features

- Sizes: 4" & 5/6" round
- Efficacy: up to 78lm/w
- Lumens: 900-1400lm
- Wattage: 12W (4"), 18W (5/6")
- Voltage: 120V (50/60 Hz)
- CRI: 90 min.
- CCT: 3000K
- Dimming: ELV/TRIAC (10%)
- Lifetime: 42,000 hour (L70)

Round 4" luminaire ▲



example: RD4R089301W

Round 5/6" luminaire ▲

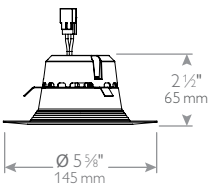


example: RD5R129301W

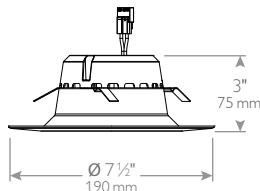
Luminaire

Series	Size	Shape	Lumens	CRI	CCT	Voltage	Finish
RD		R		9	30	1	W
RD Retrofit downlight	4 4-inch	R Round	08 900lm	9 90	30 3000K	1 120 V	W White (matte)
	5 5/6-inch	R Round	12 1400lm				

Round 4" aperture



Round 5/6" aperture



Compatible 4" frames

3 7/8" (100mm) min to 4 1/8" (105mm) max diameter and 5 5/8" (142mm) height

CP4RN/CP4RR
FDIC4V50
P4/P4R/P4ASIC/P4GU/P4RGU
R4/RR4/R4ASICG

Compatible 5/6" frames

5 1/2" (140mm) min to 6" (152mm) max diameter and 7 3/8" (188mm) height

CP6RN/CP6RR/CR1NBQP
FD2IC6V90
P6GU/P6RGU/PR75ASIC/PRR75ICX
QL6NBQP & 1104IC

Certifications: IC rated for direct contact with thermal insulation.
Title 24, cULus listed (UL 1598) for wet locations (covered ceiling only).
RoHS compliant, ENERGY STAR® and AirSeal for minimal air leakage.

IC
INSULATION
CONTACT

CLASSIFIED
UL
US



RoHS
COMPLIANT



CorePro

round aperture downlights

Less money, bigger impact

An affordable solution for customers accustomed to the economic price and light output of an incandescent and compact fluorescent system. New construction and Remodeler frame-in kits available.

Downlighting
.....
Retrofit & CorePro
downlights
.....



Retrofit standard (E26) socket adapter included with each trim.

Features

- Sizes: 4", 5" & 6" round
- Efficacy: 63-89 lm/w
- Lumens: 750-1250
- Wattage: 11W-16W
- Voltage: 120V (50/60 Hz)
- CRI: 80 & 90 min.
- CCT: 3000K & 4000K
- Dimming: TRIAC (10%)
- Lifetime: 50,000 hour (L70)

Frame

Series	Size	Shape	Installation
CP		R	
CP Core Pro downlight	4 4-inch 5 5-inch 6 6-inch	R Round	N New Construction (Airseal IC) R Remodeler (Airseal IC)

Other compatible frames

4" aperture

P4/P4R/P4ASIC
P4GU/P4RGU
R4/RR4/R4ASICG
FDIC4V50

5" aperture

1004IC/1004ICR
CR5QP/CRR5QP

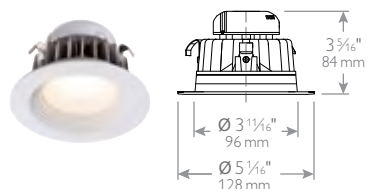
6" aperture

1104IC
CR1NBQP/QL6NBQP
P6GU/P6RGU
PR75ASIC/PRR75ICX
FD2IC6V90

Luminaire

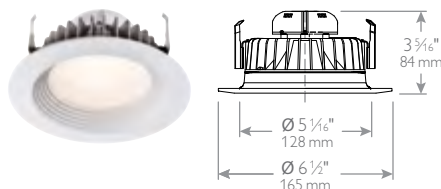
Series	Size	Shape	Shape	Lumens, CRI, CCT	Efficacy, Wattage, Voltage	Finish
CP		R	B			W
CP Core Pro downlight	4 4-inch	R Round	B Baffle	07830 800lm, 80 CRI, 3000 K	73lm/W, 11W (max), 120 V	W White (matte)
				07930 750lm, 90 CRI, 3000 K	68lm/W, 11W (max), 120 V	
				07840 850lm, 80 CRI, 4000 K	77lm/W, 11W (max), 120 V	
	5 5-inch	R Round	B Baffle	08830 950lm, 80 CRI, 3000 K	73lm/W, 11W (max), 120 V	
				08930 900lm, 90 CRI, 3000 K	69lm/W, 11W (max), 120 V	
				08840 1000lm, 80 CRI, 4000 K	77lm/W, 11W (max), 120 V	
	6 6-inch	R Round	B Baffle	07830 835lm, 80 CRI, 3000 K	75lm/W, 11W (max), 120 V	
				10830 1200lm, 80 CRI, 3000 K	86lm/W, 14W (max), 120 V	
				10930 1000lm, 90 CRI, 3000 K	63lm/W, 16W (max), 120 V	
				10840 1250lm, 80 CRI, 4000 K	89lm/W, 14W (max), 120 V	

Round 4" aperture



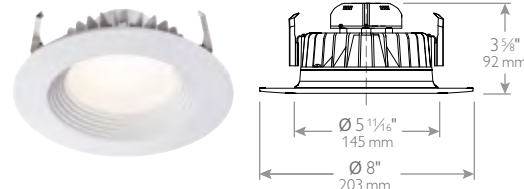
example: CP4RB07930W

Round 5" aperture



example: CP5RB08930W

Round 6" aperture



example: CP6RB10930W

Certifications: IC rated for direct contact with thermal insulation.
Title 24, cULus listed (UL 1598) for wet locations (covered ceiling only).
RoHS compliant, ENERGY STAR® and AirSeal for minimal air leakage.

IC
INSULATION
CONTACT

cUL
LISTED



RoHS
COMPLIANT



Surface-mount round aperture downlights

Simple to specify and simpler to install

Perfect when faced with a challenging ceiling, but a refined-looking LED downlight is required, look no further. With a modern, clean, slim profile, Philips Lightolier new LED Surface-mount downlight has everything you need.



Features

- Sizes: 5", 7" round
- Efficacy: min 69 lm/w
- Lumens: 600-1000
- Wattage: 10W-15W
- Voltage: 120V (50/60 Hz)
- CRI: 90 min.
- CCT: 3000K
- Dimming: TRIAC (10%)
- Lifetime: 50,000 hour (L70)

Round 5" luminaire ▲



example: SD5R079301W

Round 7" luminaire ▲

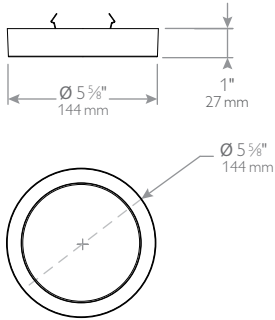


example: SD7R099301W

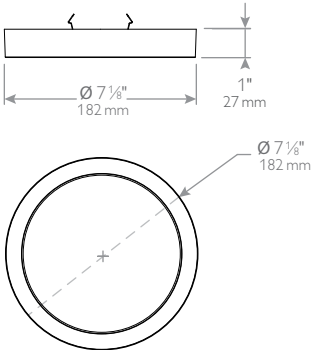
Luminaire

Series	Size	Shape	Lumens	CRI	CCT	Voltage	Finish
SD		R		9	30	1	W
SD Surface-mount downlight	5 5-inch	R Round	07 600lm	9 90	30 3000K	1 120V	W White (white)
	7 7-inch	R Round	09 1000lm				

Round 5" aperture



Round 7" aperture



Certifications: IC rated for direct contact with thermal insulation. Title 24, cULus listed (UL 1598) for wet locations (covered ceiling only). RoHS compliant, ENERGY STAR® and AirSeal for minimal air leakage.

IC
INSULATION
CONTACT



RoHS
COMPLIANT



SlimSurface

round & square aperture downlights

An easy to install architecturally pleasing low profile downlight

Leverages the latest LED technology, and featuring a similar performance to typical recessed downlights but in a surface mount design. Delivering high lumen output and great visual comfort, this 5/8" surface mount downlight is appealing to both specifiers and contractors.



Downlighting
.....
Surface mount
& SlimSurface
downlights
.....

Features

- Sizes: 4" & 6" square and 5", 7" & 10" round
- Efficacy: 58-94 lm/W
- Lumens: 650, 1000 & 2200
- Wattage: 9W, 12W & 28W
- Voltage: 120V & 120V-277V
- CCT: 2700K-4000K
- CRI: 80 & 90 min.
- Dimming: ELV/TRIAC (10%)
- Lifetime: 50,000 hour (L70)

Square 4" & 6" luminaire ▲



example: S4S830K7



example: S6S830K10AL

Round 5", 7" & 10" luminaire ▲



example: S5R830K7



example: S7R830K10AL



example: S10R830K22BK

Luminaire

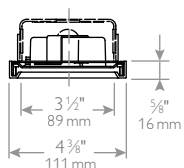
Series	Size / Shape	CRI / CCT	Lumens	Finish	Dimming (Voltage)
S					
S SlimSurface	4S 4-inch / Square	827K 80 CRI / 2700K CCT	7 650lm (S5R & S4S only)	— White	— ELV / Triac (120V)
	5R 5-inch / Round	830K 80 CRI / 3000K CCT	10 1000lm (S7R & S6S only)	AL Aluminum	
	6S 6-inch / Square	835K 80 CRI / 3500K CCT	22 2200lm (S10R only)	BK Black	
	7R 7-inch / Round	840K 80 CRI / 4000K CCT		MT Metal ²	Z10U 0-10V (Universal 120-277V)
	9R 9-inch / Round	927K 90 CRI / 2700K CCT		W White	
	10R 10-inch / Round	930K 90 CRI / 3000K CCT		AL Aluminum	
				BK Black	
				MT Metal ²	

1. The 10" Round (S10R) installs into 4-11/16" J-box.

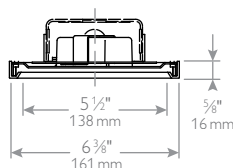
2. The Metal (MT) finish is only available with 10" Round (S10R) configurations.

Note: SlimSurface 10" round available Q2 2018.

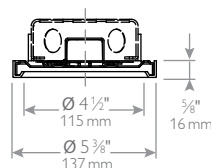
Square 4" aperture



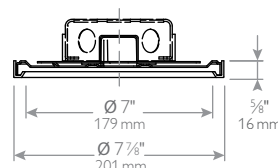
Square 6" aperture



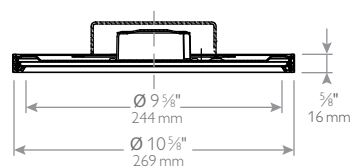
Round 5" aperture



Round 7" aperture



Round 10" aperture



Certifications: IC rated for direct contact with thermal insulation.
Title 24, cULus listed (UL 1598) for wet locations (covered ceiling only).
RoHS compliant, ENERGY STAR® and AirSeal for minimal air leakage.

IC
INSULATION
CONTACT

cUL
LISTED



RoHS
COMPLIANT



LyteCaster

round & square aperture downlights

Defining general purpose LED downlights

Ideal general purpose downlighting solution, providing comfortable, quality light. Available in new construction and remodeler frame with interchangeable light engine that is offered in two lumen packages. The downlight is wet location listed and comes in 3 standard option.



Features

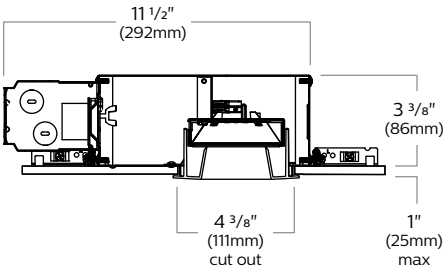
- Sizes: 4", 5" & 6" round and 4", 5" & 6" square
- Efficacy: up to 90 lm/W
- Lumens: 650-2000
- Wattage: 7-20W
- Voltage: 120V or 120V-277V
- CCT: 2700K-4000K
- CRI: 80 & 90 min.
- Dimming: ELV/TRIAC & 0-10V
- Lifetime: 50,000 hour (L70)

Housing

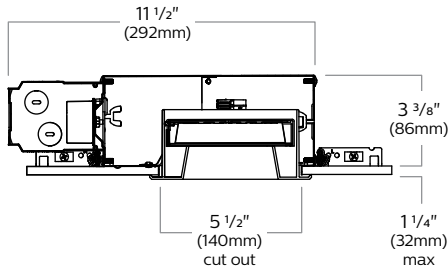


Series / Size / Shape	Lumens	Installations (Airseal IC)	Dimming (Voltage) Version
L4R 4-inch / Round	— 650lm 10 1000lm	A New construction with screws AN New construction with nails R Remodeler (06R, 10R or 15R)	E1VA ELV (120V) Version A Z10UVA 0-10V (Unv 120-277V) Version A
L5R 5-inch / Round	— 1000lm 15 1500lm		
L6R 6-inch / Round	— 1500lm 20 2000lm		
L5R 5-inch / Round	— 700lm	A New construction with screws AN New construction with nails	EWG1 ELV / Triac (120V) warm glow effect (can not specify with adjustable)
L5R 5-inch / Round	07 700lm	R Remodeler	

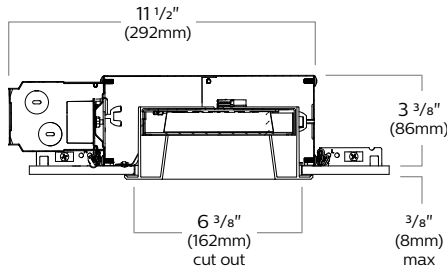
4" apertures



5" apertures



6" apertures



Available in 3 aperture sizes: 4", 5", & 6". The 4" round delivers 650 and 1000 lumens, and 4" square delivers 1000 lumens. The 5" round delivers 1000 and 15000 lumens, and 5" square delivers 1000 lumens. A 5" round is also available with warm glow effect that delivers 700 lumens. The 6" round delivers 1500 and 2000 lumens, and 6" square delivers 1500 lumens.



Light engine



Series / Size / Shape	Lumens ¹	CRI / CCT	Version
L4R 4-inch / Round	— 650lm 10 1000lm	827 80 CRI / 2700 K 830 80 CRI / 3000 K 835 80 CRI / 3500 K 840 80 CRI / 4000 K 927 90 CRI / 2700 K 930 90 CRI / 3000 K	VA Version A
L5R 5-inch / Round	— 1000lm 15 1500lm		
L6R 6-inch / Round	— 1500lm 20 2000lm		
L5R 5-inch / Round	— 700lm	8WG 80 CRI / 2700 K-2200 K / warm glow effect	



1. Leave lumens field blank to specify 4" 650lm, 5" 1000lm or 6" 1500lm configurations.

Trim



Series / Size	Shape / Type	Details / Finish
L4 LyteCaster 4-inch	R Round / Downlight	DD Open downlight / Clear diffuse with white flange
L5 LyteCaster 5-inch	S Square / Downlight	DW Open downlight / White with white flange
L6 LyteCaster 6-inch		BW Baffle downlight / White with white flange

Round trims

Warm glow effect

Create a warm, relaxing ambiance with warm glow effect. This cutting-edge technology reduces the color temperature to a warm glow when dimmed, taking LED dimming to new levels.



RDD Round open downlight with clear diffuse finish and white flange



RDW Round open downlight with white finish and white flange



RBW Round baffle downlight with white finish and white flange

Square trims



SDD Square open downlight with clear diffuse finish and white flange



SDW Square open downlight with white finish and white flange



SBW Square baffle downlight with white finish and white flange

Note: Square trims are configured with round housings and light engines.

Certifications: IC rated for direct contact with thermal insulation.
 Title 24, cULus listed (UL 1598) for wet locations (covered ceiling only).
 RoHS compliant, ENERGY STAR® and AirSeal for minimal air leakage.



LyteCaster adjustable round aperture downlights

Defining general purpose LED downlights

Ideal general purpose downlighting solution, providing comfortable, quality light. Available in new construction and remodeler frame with interchangeable light engine that is offered in two lumen packages. The downlight is wet location listed and comes in 3 standard option.



Features

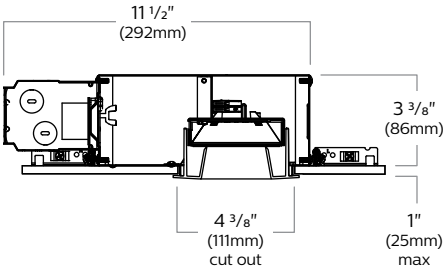
- Sizes: 4", 5" & 6"
- Efficacy: up to 90 lm/W
- Lumens: 650-2000
- Wattage: 7-20 W
- Voltage: 120V or 120V-277V
- CCT: 2700K-4000K
- CRI: 80 & 90 min.
- Dimming: ELV/TRIAC & 0-10V
- 50,000 hour rated life (L70)

Housing

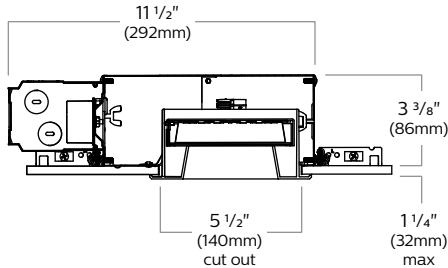


Series / Size / Shape	Lumens		Installations (Airseal IC)	Dimming (Voltage) Version
L4R 4-inch / Round	— 650lm	10 1000lm	A New construction with screws	E1VA ELV (120V) Version A Z10UVA 0-10V (Unv 120-277V) Version A
L5R 5-inch / Round	— 1000lm	15 1500lm	AN New construction with nails	
L6R 6-inch / Round	— 1500lm	20 2000lm	R Remodeler (06R, 10R or 15R)	
L5R 5-inch / Round	— 700lm		A New construction with screws AN New construction with nails	EWG1 ELV / Triac (120V) Warm glow effect (can not specify with adjustable)
L5R 5-inch / Round		07 700lm	R Remodeler	

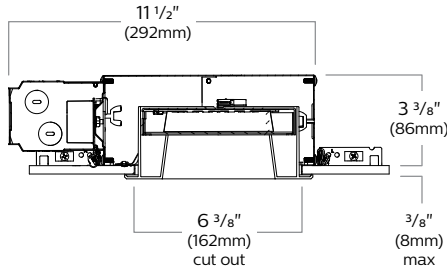
4" apertures



5" apertures



6" apertures





Available in 3 aperture sizes: 4", 5", & 6". The 4" round delivers 650 and 1000 lumens, and 4" square delivers 1000 lumens. The 5" round delivers 1000 and 15000 lumens, and 5" square delivers 1000 lumens. A 5" round is also available with warm glow effect that delivers 700 lumens. The 6" round delivers 1500 and 2000 lumens, and 6" square delivers 1500 lumens.

Light engine/Trim



Light engine is built into a round trim. No need to specify a trim.

Series / Size	Shape / Type	Details / Finish ¹
L4 LyteCaster 4-inch	RA Round / Adjustable	06 ___ WVA 650lm (CRI/CCT) / White with white flange, Version A 10 ___ WVA 1000lm (CRI/CCT) / White with white flange, Version A
L5 LyteCaster 5-inch	RA Round / Adjustable	10 ___ WVA 1000lm (CRI/CCT) / White with white flange, Version A 15 ___ WVA 1500lm (CRI/CCT) / White with white flange, Version A
L6 LyteCaster 6-inch	RA Round / Adjustable	15 ___ WVA 1500lm (CRI/CCT) / White with white flange, Version A 20 ___ WVA 2000lm (CRI/CCT) / White with white flange, Version A

1. Match CRI / CCT (827, 830, 835, 840, 927) from Light Engine configuration to the "___" placeholder.
Warm glow effect is not available with Adjustable trims.

Round trims

Warm glow effect
Create a warm, relaxing ambiance with warm glow effect. This cutting-edge technology reduces the color temperature to a warm glow when dimmed, taking LED dimming to new levels.



RA 
Round adjustable with white finish and white flange

Certifications: IC rated for direct contact with thermal insulation.
Title 24, cULus listed (UL 1598) for wet locations (covered ceiling only).
RoHS compliant, ENERGY STAR® and AirSeal for minimal air leakage.



LyteCaster accent round aperture downlights

Design versatility to fit any space

Available in a variety of round and square accent styles and finishes with efficacies ranging up to 800 lm/W. A wide range of options that allow you to customize your lighting solution to best suit the application.



Features

- Sizes: 4", 5" & 6"
- Efficacy: up to 90 lm/W
- Lumens: 650-2000
- Wattage: 7-20W
- Voltage: 120V or 120V-277V
- CCT: 2700K-4000K
- CRI: 80 & 90 min.
- Dimming: ELV/TRIAC (10%)
- 50,000 hour rated life (L70)

Housing



Light engine



Trims



Downlight



Adjustable



Gimbal



Lensed wall wash



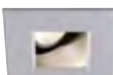
Shower



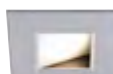
Adjustable pinhole



Downlight



Adjustable



Lensed wall wash



Shower

Series / Size	Installations (Airseal IC)	Dimming	Voltage
L3	<input type="checkbox"/>	<input type="checkbox"/>	<input type="checkbox"/>
L3 LyteCaster 3-inch accent	A New construction with screws (Non-IC)	E ELV/TRIAC	1 120V
	AN New construction with nails (Non-IC)		
	C Remodeler (Non-IC) ¹		
	N New construction (Non-IC)	Z10 0-10V	U Universal 120/277V

Series / Size	Lumens	CRI / CCT	Beam	Option
L3	08	<input type="checkbox"/>	<input type="checkbox"/>	<input type="checkbox"/>
L3 LyteCaster 3-inch accent	08 800lm	827 80CRI / 2700K	S Spot (17°)	— None
		830 80CRI / 3000K	NF Narrow Flood (22°)	
		835 80CRI / 3500K	F Flood (33°)	
		927 90CRI / 2700K	S Spot (17°)	CW CrispWhite ²
		930 90CRI / 3000K ²	NF Narrow Flood (22°)	
			F Flood (33°)	

Series	Shape / Type	Style
L3	<input type="checkbox"/>	<input type="checkbox"/>
L3 LyteCaster 3-inch accent	RD Round / Downlight	C Chrome Cone with white flange
	RA Round / Adjustable ¹	D Diffuse Cone with white flange
	RLW Round / Lensed Wall Wash ³	W White Cone with white flange
	RB Round / Baffle Downlight	W White Baffle with white flange
	RAB Round / Baffle Adjustable	
	RAP Round / Adjustable Pinhole	A Aluminum
	RG Round / Gimbal ⁴	B Black (gimbal only)
	RS Round / Shower Light	W White
	SLW Square / Lensed Wall Wash ³	D Diffuse Cone with white flange
	SS Square / Shower Light	
	SD Square / Downlight	
	SA Square / Adjustable ¹	DA Diffuse Cone with aluminum flange
		W White Cone with white flange (downlight only)

1. Remodeler frame is not compatible with adjustable trim.
2. The 3000K (30) and CrispWhite (CW) options must be ordered together.
3. Lensed wall wash (LW) is only available in Narrow flood (NF) and Flood (F) beam spreads
4. Gimbal (G) trims come with accessory holder (see spec sheets for complete listings of accessories).

Certifications: IC rated for direct contact with thermal insulation.
Title 24, cULus listed (UL 1598) for wet locations (covered ceiling only).
RoHS compliant, ENERGY STAR® and AirSeal for minimal air leakage.



LyteProfile

round aperture downlights

An easy to install architecturally pleasing low profile downlight

Provides a comfortable 60° cut-off to both the actual and reflected source. Utilizes a robust frame-in kit, light engine and reflector design that is designed for a wide variety of installation conditions with a plenum depth of 4 1/2".

Downlighting

LyteCaster
accents &
LyteProfile
downlights



Features

- Sizes: 4" & 6"
- Efficacy: up to 100 lm/W
- Lumens: 500-2500
- Wattage: 7-20W
- Voltage: 120V or 120V-277V
- CCT: 2700K-4000K
- CRI: 80 & 90 min.
- Dimming: 0-10V & Lutron
- 50,000 hour rated life (L70)

Frame



Series	Shape / Type	Lumens	Installation	Lumens	Voltage	Version
	RD		N			
P4 4-inch	RD Round / Downlight	10 1000lm	N New construction (Non-IC) ¹	Z10 0-10V	U Universal 120/277V	VB Version B
		15 1500lm		L Lutron		
		20 2000lm		3 347V ²		
P6 6-inch	RD Round / Downlight	10 1000lm	N New construction (Non-IC) ¹	Z10 0-10V	1 120V	VB Version B
		15 1500lm		L Lutron		
		20 2000lm	N New construction (Non-IC) ¹	2 277V	3 347V ²	VBEM Version B w/Emergency
		25 2500lm		3 347V ²		

Light engine



Series	Shape / Type	CRI / CCT	Version
	RD		VB
P4 4-inch P6 6-inch	RD Round / Downlight	827 80 CRI / 2700 K	VB Version B
		830 80 CRI / 3000 K	
		835 80 CRI / 3500 K	

Downlight trims



Lensed wall wash trims



Series	Shape / Type	Reflector	Flange
P4 4-inch P6 6-inch	RD Round / Downlight RLW Round / Lensed wall wash	CL Clear	— White (painted)
		CC Comfort clear	
		D Clear diffuse (apply)	P Painted (aperture match)
		W White (painted)	

1. T-Bar anchor clips: 1956 (set of 4, for use with mounting bars) need to be ordered separately.
Mounting Bars: 1950-18" (set of 2) 1951-27" (set of 2).
2. Not available with Emergency.

Certifications: IC rated for direct contact with thermal insulation.
Title 24, cULus listed (UL 1598) for wet locations (covered ceiling only).
RoHS compliant, ENERGY STAR® and AirSeal for minimal air leakage.

IC
INSULATION
CONTACT

cUL
LISTED



RoHS
COMPLIANT



Calculite

round & square aperture downlights

Setting a powerful standard for aesthetics, performance and reliability

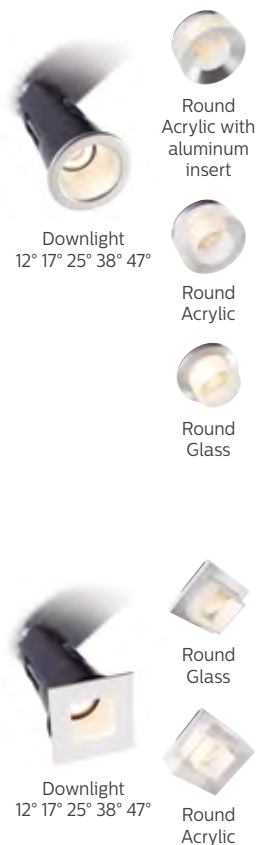
The new Calculite generation 3 line subtly blends into the environment and casts a soft, uniform illumination free of distractions – due to the patented component design. Also the simplified downlight installation uses a three part system of frame, light engine, and reflector to save time and hassle, even allowing future upgrades without entering the plenum.



Features

- Sizes: 1.75", 4", 6" & 7"
- Efficacy: up to 115 lm/W
- Lumens: 400 – 6000
- Wattage: 6-50 W
- Voltage: 120V/120V-277V/347V
- CCT: 2700K-4000K
- CRI: 80 & 90 min.
- Dimming: to 1% (standard)
- 60,000 hour rated life (L90)

Calculite 1.75" ▲



Calculite 3" Evolution ▲▲▲



Calculite 4" ▲▲▲



Certifications: IC rated for direct contact with thermal insulation. Title 24, cULus listed (UL 1598) for wet locations (covered ceiling only). RoHS compliant, ENERGY STAR® and AirSeal for minimal air leakage.



Calculite 6" ▲▲▲



Downlight
Narrow Medium Wide



Lensed
Wall Wash



Wall Wash



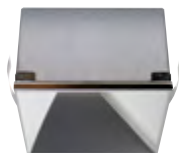
Double Wall Wash



Corner Wall Wash



Downlight



Lensed Wall Wash



Downlight



Wall Wash



Wall Wash

Calculite 7" ▲▲▲



Downlight
Narrow Medium Wide



Lensed
Wall Wash



Wall Wash



Double Wall Wash



Corner Wall Wash

Vetro decorative elements

Available in select styles for 4", 6" and 7" size downlight fixtures.



Round acrylic with
aluminum insert



Round angled double
opal glass



Round angled double opal
glass within clear glass



Round acrylic



Round opal glass



Round opal glass
within clear glass

CFL and INC sources



Conventional sources for tight budgets

Philips Lightolier downlights using conventional light sources can keep you within a tight budget without the worry of lower quality or reliability in commercial applications. Order the most commonly requested products right off the distributor shelf to save time getting products to the job site. But, when customization is needed for more specialized applications like retail or schools, you can configure the lighting to best highlight merchandise, or aid in tasks centered around learning. Create your ideal luminaire by choosing the exact aperture size, trim, beam spread, lumen output and even dimming and emergency options.



pg. 26

LytePoints

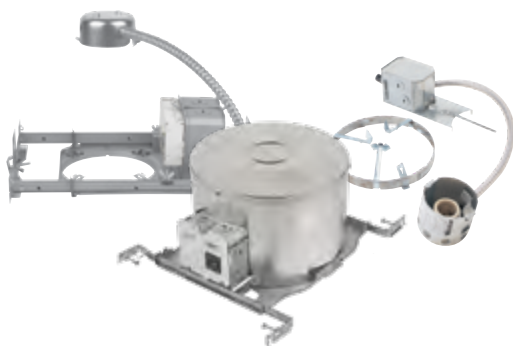
round & square 3 3/4" aperture downlights



pg. 36

LyteCaster

round 3 3/4", 5 1/4" & 6 3/4" aperture downlights



pg. 42

LyteCaster performance

round 5 1/4" & 6 3/4" aperture downlights



pg. 44

C Plus

round 4" & 6" aperture downlights

LytePoints

round & square aperture downlights

Featuring "clamp-down action" mounting clips for easy installation

Renovations with insulated ceilings accessible from above: Installers have no need for mounting bars and spend less time in attic, as mounting clips secure housing in position from below ceiling.

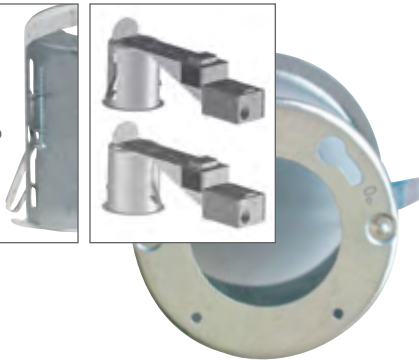
New constructions (IC/Non-IC): Installers can work faster featuring frame-in kit stability that is not as critical as with competing brands, with mounting clips that sandwich housing and frame-in kit to ceiling material.

FLEX system offers the freedom to choose housing positions 0° or 90°

With two key slots on top of the housing, there are two ways to attach the housing to the Power Pack. When in a tight spot, remodelers can be installed with mounting clips parallel to joists, conduits or other obstacles, providing more room to maneuver.

Clamping power

Residence mounting clips feature two screw guides allowing to clamp down on ceilings from 1/8" to 1" thick.



Finish options

Look for the star rating on every LytePoints luminaire to determine quality and facilitate selection. Whether rated Good, Better, or Best, LytePoints downlights are designed to achieve the highest output possible from the available source while providing superior visual comfort and quality lighting. There's no better way to create high-impact accent and ambient lighting for homes, retail stores and other spaces than with low voltage lighting. Lytecaster provides a wide range of attractive reflector trims to meet the needs of the most discerning eye.

Specular high-performance



CL Clear Specular



BA Black Specular



CCD Clear Diffuser

Shades, dual-tone designs and others



WH White



BK Black



CM Chrome



SB Satin Brass



ST Stainless Steel



AL Aluminum

Glass



FG White Frosted



Downlighting

 Conventional sources

 LytePoints



Budget INC downlighting

LytePoints

Non-IC 3³/₄" remodelers

Remodelers

Frames are designed for mounting prior to ceiling installation.

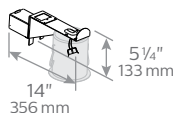
- Available for insulated and non-insulated ceilings.
- Low-voltage MR16 or line-voltage ES16.
- Factory-installed trim enclosure simplifies installation.
- Vertically mounted magnetic transformer dramatically reduces noise.
- Vertical adjustment from below to accommodate from 1/8" to 1" thick ceilings.



300ESX (Non-IC)



ES/ESD16 (120V)

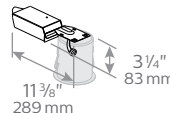


- Remodeler measurement is 5⁷/₈" deep and accepts most 3³/₄" trims.
- Power pack for 50W ES/ESD16 halogen lamps (no transformer) with built-in thermal protection.
- Designed to permit wiring from below the ceiling line.
- Damp or wet location rated depending on trim used.
- UL/CSA certified for through branch circuit wiring.

303MRE (Non-IC)



MR16 (12V)

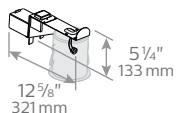


- Ultra-Shallow Electronic Remodeler measurement is 3¹/₄" deep
- Integral electronic transformer (37W max) with built-in thermal protection.
- Accepts 313, 315, 316, 317, 373, 378 trims.
- Swivel J-box for low plenum spaces.
- Certified for wall mounting with 378 trim using a 37W MR16 lamp.
- Designed to permit wiring from below the ceiling line.
- Certified for chain wiring.

300MRX (Non-IC)



MR16 (12V)

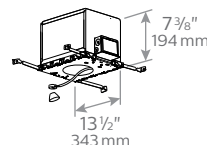


- Remodeler measurement is 5⁷/₈" deep and accepts most 3³/₄" trims.
- Integral cable clamps and 50W magnetic transformer with built-in thermal protection.
- Designed to permit wiring from below the ceiling line.
- Damp or wet location rated depending on trim used.
- UL/CSA certified for through branch circuit wiring.

302MRIC7X (IC)



MR16 (12V)

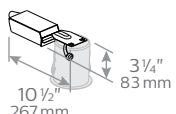


- Rugged mounting system with 13" heavy gauge mounting bars (extends to 27").
- Integral cable clamps and (50W MR16 max) magnetic transformer.
- Accepts 304, 305, 313, 372, 378 trims.
- UL/CSA certified for through branch circuit wiring.

3401MREX (Non-IC)



MR16 (12V)

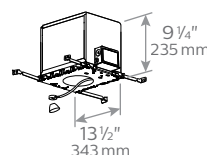


- Low-Profile Electronic Remodeler measurement is 4⁵/₈" deep.
- Suitable for 300X & 400X Series.
- Integral electronic transformer (50W max) with built-in thermal protection.
- Swivel J-box for low plenum spaces.
- Designed to permit wiring from below the ceiling line.
- Damp or wet location rated depending on trim used
- Certified for chain wiring.

302MRIC9X (IC)



MR16 (12V)



- Rugged mounting system with 13" heavy gauge mounting bars (extends to 27").
- Integral cable clamps and (50W MR16 max) magnetic transformer.
- Accepts all 300 trims.
- Internal thermal cut-out insures against overheating due to incorrect lamping.
- Vapor barrier extender accessory available for AirSeal installation.
- UL/CSA certified for through branch circuit wiring.

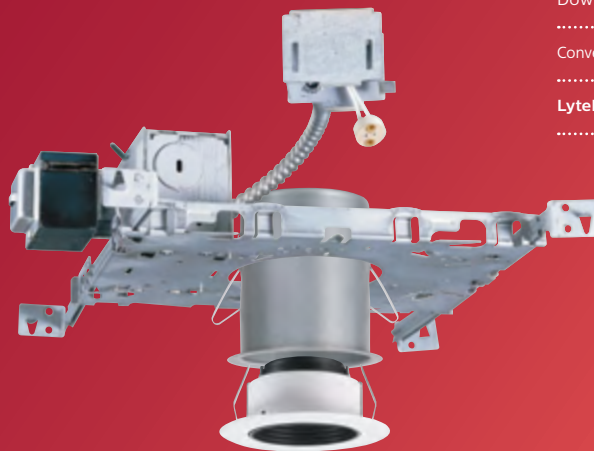
LytePoints

Non-IC & IC 3 3/4" frames & housings

New construction

Frames are designed for mounting prior to ceiling installation.

- Available for insulated and non-insulated ceilings.
- Low-voltage MR16 or line-voltage ES16.
- Factory-installed trim enclosure simplifies installation.
- Vertically mounted magnetic transformer dramatically reduces noise.
- Vertical adjustment from below to accommodate from 1/8" to 1" thick ceilings.

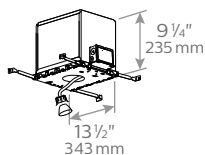
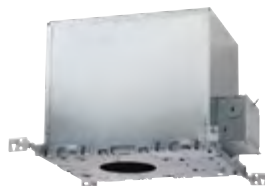


Downlighting
.....
Conventional sources
.....
LytePoints
.....

302ESICX (IC)



ES/ESD16 (120V)

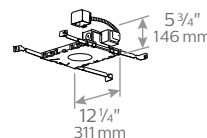
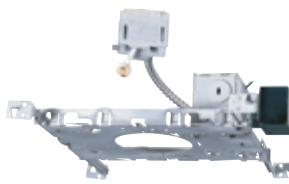


- Rugged mounting system with 13" heavy gauge mounting bars (extends to 27").
- Integral cable clamps and internal thermal cut-out insures against overheating due to incorrect lamping.
- Vapor barrier extender accessory available for AirSeal installation.
- UL/CSA certified for through branch circuit wiring.

302MRX (Non-IC)



MR16 (12V)

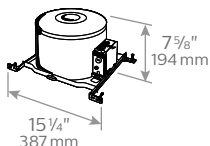


- Rugged mounting system with 13" heavy gauge mounting bars (extends to 27").
- Integral cable clamps and 50W magnetic transformer with built-in thermal protection.
- Mounting bar locking clips included.
- UL/CSA certified for through branch circuit wiring.

302ESAICX (AirSeal IC)



ES/ESD16 (120V)

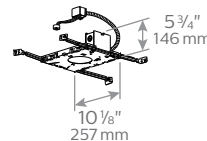
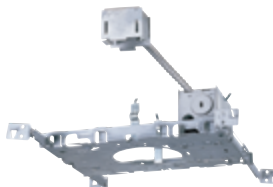


- Internal thermal cut-out insures against overheating due to incorrect lamping.
- Integral nails and cable clamps.
- Mounting bars locking screw on one side of frame and pivots for easy attachment and wiring in below ceiling line (extend up to 24").

302MREX (Non-IC)



MR16 (12V)

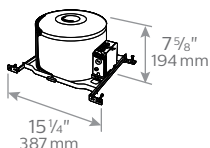


- Rugged mounting system with 13" heavy gauge mounting bars (extends to 27").
- Integral cable clamps and 50W magnetic transformer with built-in thermal protection.
- Mounting bar locking clips included.
- 277v version (302MREX277) available. Consult factory.
- Damp or wet location rated depending on trim used.
- UL/CSA certified for through branch circuit wiring.

302MRAICX (AirSeal IC)



MR16 (12V)

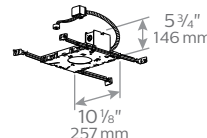


- Internal thermal cut-out insures against overheating due to incorrect lamping.
- Integral cable clamps, nails and (50W MR16 max) magnetic transformer.
- Accepts all 300 trims.
- Mounting bars locking screw on one side of frame and pivots for easy attachment and wiring in below ceiling line (extend up to 24").

302ESX (Non-IC)



ES/ESD16 (120V)



- Rugged mounting system with 13" heavy gauge mounting bars (extends to 27").
- Integral cable clamps and thermal cut-out insures against overheating due to incorrect lamping.
- Mounting bar locking clips included.
- Vapor barrier extender accessory available for AirSeal installation for 24" o.c. joist.
- UL/CSA certified for through branch circuit wiring.

LytePoints

round 3 3/4" trims

Cones/Baffles

Open Downlights provide superior performance for general lighting applications requiring greater lumen output. Specular reflectors feature a specular, mirror-like finish that provides greater light output.

Pinholes/Slots

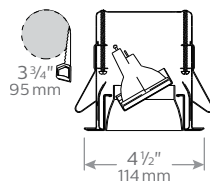
Small aperture accent lights conceal the light source and provide a small aperture. The Pinhole and Slot provides consistent ceiling appearance and adjustment in a small aperture fixture.



Specular Cone ★★★

Offers non-glare optics for added visual comfort. Recessed lamp rotates 360° horizontally and 35° vertically (can be aimed without removing trim).

example: 304CLX



CL Clear specular



BA Black specular

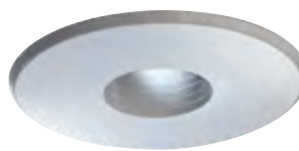
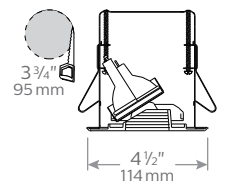


CCD Clear diffuse

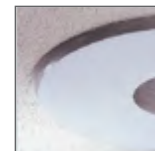
Pinhole ★★★

Tiny aperture accent light. Easy relamping and aiming permits up to 30° vertical and 360° horizontal adjustments.

example: 308ALX



AL Aluminum



WW White

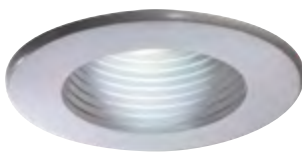
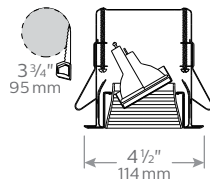


BK Black

Die-Cast Step Baffle ★★★

One-piece die-cast flange and step baffle (except BK). Recessed lamp rotates 360° horizontally and 35° vertically (can be aimed without removing trim).

example: 305ALPX



ALP Aluminum



BK Black

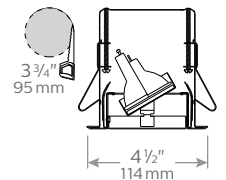


WHW White

Pinhole Slot ★★★

Lampholder rotates 360° horizontally and 40° vertically. Inner black shield reduces glares. Thin faceplate reduces flash from lamp on edges.

example: 309WHX



WH White



ST Stainless steel

New Construction (Non-IC)

302MREX	302MRSPX
50W MR16 37W MR16IR	

Remodeler (Non-IC)

300MRSPX	3401MREX	303MRE
50W MR16 37W MR16IR		N/A

New Construction (IC)

302MRIC7SPX	302MRIC9SPX
50W MR16 37W MR16IR	

New Construction (AirSeal IC)

302MRAICSPX	302MRAICEX
50W MR16 37W MR16IR	

New Construction (Non-IC)

302MREX	302MRSPX
50W MR16 37W MR16IR	

Remodeler (Non-IC)

300MRSPX	3401MREX	303MRE
50W MR16 37W MR16IR	42W MR16	N/A

New Construction (IC)

302MRIC7SPX	302MRIC9SPX
37W MR16IR	50W MR16 37W MR16IR

New Construction (AirSeal IC)

302MRAICSPX	302MRAICEX
37W MR16IR	

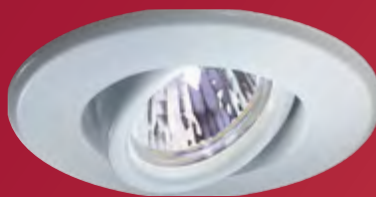
Note: Trims accommodate all ceiling types (1/8" to 1" thick).

LytePoints

round 3 3/4" trims

Gimbal / Elbow

These miniature low voltage accent lights feature the versatile MR16 and ES16 light sources to dramatically highlight paintings, artwork and other objects while carefully blending into the ceiling.

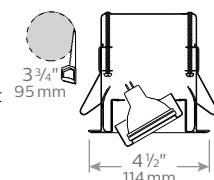


Downlighting
.....
Conventional sources
.....
LytePoints
.....

Residential Gimbal ★★

Lamp sits flush with the ceiling. Adjustable up to 30° vertical and 360° horizontal. Easiest and fastest install with rear lamping and patented spring clips.

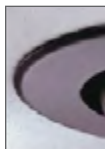
example: 313WHX



WH White



AL Alum.



BK Black

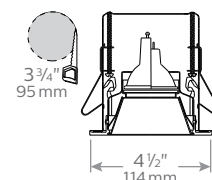


ST Stainless

Basic Cone ★★

Mini-aperture accent lights with chrome or brass cone. Recessed lamp provides excellent shielding.

example: 374CHX



CH Chrome

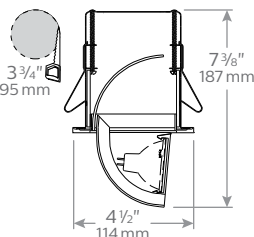


BS Brass

Elbow Flat ★★

Retracts into fully recessed downlight. Elbow adjusts up to 70° vertical and 360° horizontal. Certified for wall mounting with 303MRE.

example: 378WHX



WH White



BK Black

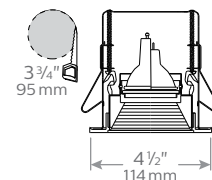


ST Stainless steel

Basic Baffle ★★

Mini-aperture downlight basic step baffle. Style-matched with other line voltage step baffles.

example: 375WHX



WH White



BK Black

New Construction (Non-IC)

302MREX	302MRSPX
50W MR16	
37W MR16IR	

Remodeler (Non-IC)

300MRSPX	3401MREX	303MRE
50W MR16		
37W MR16IR		37W MR16IR

New Construction (IC)

302MRIC7SPX	302MRIC9SPX
50W MR16*	
37W MR16IR	

New Construction (AirSeal IC)

302MRAICSPX	302MRAICEX
50W MR16	
37W MR16IR	

New Construction (Non-IC)

302MREX	302MRSPX
50W MR16	
37W MR16IR	

Remodeler (Non-IC)

300MRSPX	3401MREX	303MRE
50W MR16		
37W MR16IR		N/A

New Construction (IC)

302MRIC7SPX	302MRIC9SPX
37W MR16IR	50W MR16
	37W MR16IR

New Construction (AirSeal IC)

302MRAICSPX	302MRAICEX
50W MR16	
37W MR16IR	

* Elbow (378) is not available with 50W MR16 for 302MRIC9SPX configurations.
Note: Trims accommodate all ceiling types (1/8" to 1" thick).

LytePoints

round 3 3/4" trims

Glass

Choose from a variety of round drop glass, residential disks, rounded glass, and contour flange options for extra impact and beautiful aesthetics to your lighting layout.



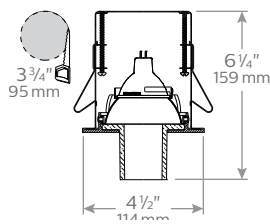
Drop Glass ★★

Adjustable Drop Glass Brushed Steel.

example: 371FGX



FG Clear specular



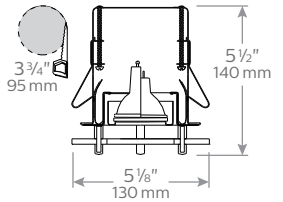
Residence Disk ★★

Beautiful ring with open centre. It has a nice impact on light by softening the outer light beam of the MR16 or ES/ESD16.

example: 317FGALX



FGAL Poly-carbonate ring with aluminum faceplate



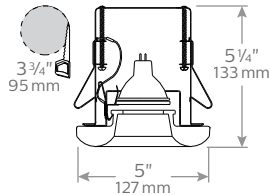
Rounded Glass ★★

Miniature decorative trim. Soft diffusion for a smooth beam pattern. Choice of three decorative glass colors.

example: 322FGX



FG White frosted glass



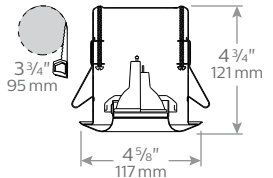
Contour ★★

Simple contoured architectural flange specially designed for task areas and wet locations such as showers (gasket included but can be removed).

example: 316WHX



WH White



New Construction (Non-IC)

302MREX	302MRSPX
50W MR16	
37W MR16IR	

Remodeler (Non-IC)

300MRSPX	3401MREX	303MRE
50W MR16		N/A
37W MR16IR		

New Construction (IC)

302MRIC7SPX	302MRIC9SPX
37W MR16IR	50W MR16
	37W MR16IR

New Construction (AirSeal IC)

302MRAICSPX	302MRAICEX
50W MR16	
37W MR16IR	

New Construction (Non-IC)

302MREX	302MRSPX
50W MR16	
37W MR16IR	

Remodeler (Non-IC)

300MRSPX	3401MREX	303MRE
50W MR16		37W MR16IR
37W MR16IR		

New Construction (IC)

302MRIC7SPX	302MRIC9SPX
50W MR16*	
37W MR16IR	

New Construction (AirSeal IC)

302MRAICSPX	302MRAICEX
50W MR16	
37W MR16IR	

* Residence Disk (317) is not available with 50W MR16 for 302MRIC7SPX configurations.
Note: Trims accommodate all ceiling types (1/8" to 1" thick).

LytePoints

round 3 3/4" trims

Countour / Shower lights

These shower light lens options add functionality without sacrificing good looks in areas that require a wet location listing such as showers, or kitchens or other commercial and residential spaces.

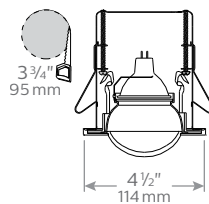
Downlighting
.....
Conventional sources
.....
LytePoints
.....



Shower Light (dome lens) ★★★

Simple architectural flange with glass diffuser for a new appearance. Specially designed for wet locations such as showers (gasket included).

example: 376WHX



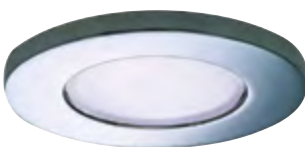
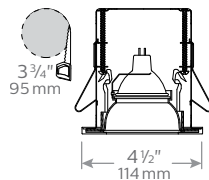
WH White



Shower Light (flat lens) ★★★

Exceptional performance with a simple and elegant styling suitable for any application and UL listed for wet location applications.

example: 377CHX



CH Chrome



WH White

New Construction (Non-IC)

302MREX	302MRSPX
50W MR16	
37W MR16IR	

Remodeler (Non-IC)

300MRSPX	3401MREX	303MRE
50W MR16		N/A
37W MR16IR		

New Construction (IC)

302MRIC7SPX	302MRIC9SPX
37W MR16IR	50W MR16
	37W MR16IR

New Construction (AirSeal IC)

302MRAICSPX	302MRAICEX
50W MR16	
37W MR16IR	

Note: Trims accommodate all ceiling types (1/8" to 1" thick).

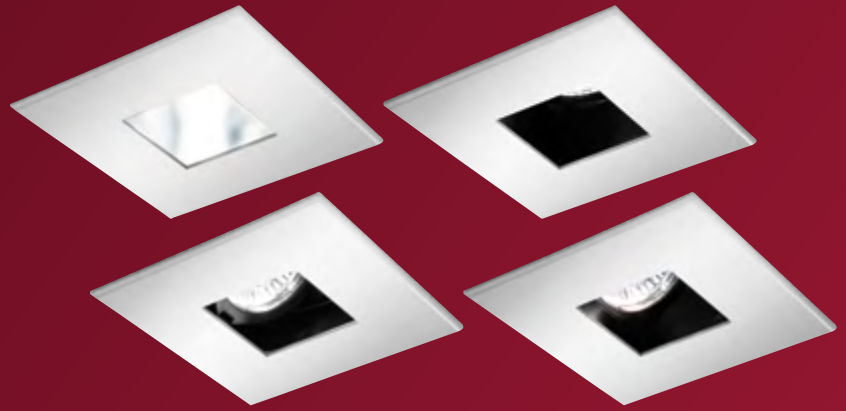


LytePoints

square 3³/₄" trims

Cones/Baffles

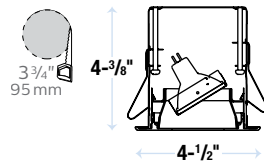
When selecting your square adjustable downlighting for new construction or remodeling, you need options that are designed for the task. The housing is made of corrosion-resistant galvanized metal. Choose from up to three flange treatments and the perfect flange, baffle, or cone for general ambient lighting, accenting, or task lighting.



Adjustable cone ★★★

Die-cast aluminum faceplate with choice of four flange treatments.

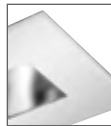
example: 343**CCDSTX**



CCDSTX  
Comfort clear
diffuse cone &
brushed steel flange



CCDCMX
Comfort clear
diffuse cone &
chrome flange



CCDWHX
Comfort clear
diffuse cone &
white flange

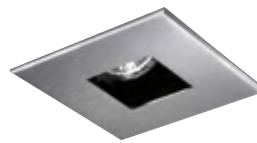
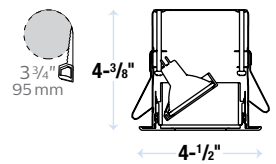


WHWHX
White cone &
white flange

Adjustable downlight ★★★

Die-cast aluminum faceplate with choice of three flange treatments.

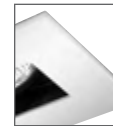
example: 348**STX**



STX  
Brushed
steel flange
& black cone



CMX
Chrome flange
& black cone

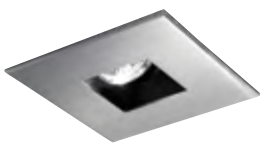
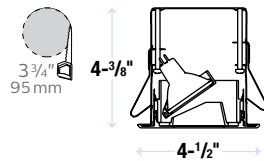


WHX
White flange
& black cone

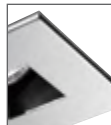
Adjustable baffle ★★★

Die-cast aluminum faceplate with choice of four flange treatments.

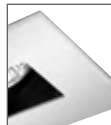
example: 344**ASTX**



ASTX 
Brushed
steel flange
& black baffle



ACMX
Chrome flange
& black baffle

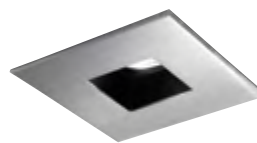
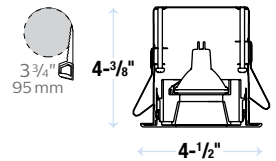


AWHX
White flange
& black baffle

Downlight baffle ★★★

Die-cast aluminum faceplate with choice of three flange treatments.

example: 344**DSTX**



DSTX 
Brushed
steel flange
& black baffle



DCMX
Chrome flange
& black baffle



DWHX
White flange
& black baffle

New Construction (Non-IC)

302MREX	302MRSPX
50W MR16	
37W MR16IR	

Remodeler (Non-IC)

300MRSPX	3401MREX	303MRE
50W MR16*		
37W MR16IR		N/A

New Construction (IC)

302MRIC7SPX	302MRIC9SPX
37W MR16IR	
	50W MR16
	37W MR16IR

New Construction (AirSeal IC)

302MRAICSPX	302MRAICEX
37W MR16IR	

New Construction (Non-IC)

302MREX	302MRSPX
50W MR16	
37W MR16IR	

Remodeler (Non-IC)

300MRSPX	3401MREX	303MRE
37W MR16IR		
		N/A

New Construction (IC)

302MRIC7SPX	302MRIC9SPX
37W MR16IR	
	50W MR16
	37W MR16IR

New Construction (AirSeal IC)

302MRAICSPX	302MRAICEX
37W MR16IR	

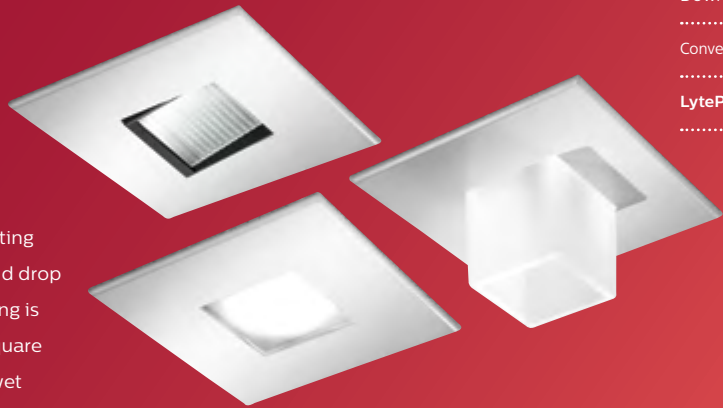
* Adjustable baffle (343) is not available with 50W MR16 for 3401MREX configurations.
Note: Trims accommodate all ceiling types (1/8" to 1" thick).

LytePoints

square 3³/₄" trims

Wall Wash / Shower lights / Glass

These square downlighting options add more variety to your lighting design palette in the form of a lensed wall wash for accenting, and drop glass for a bit of style and general or ambient lighting. The housing is made of corrosion-resistant galvanized metal. The adjustable square lensed shower light fulfills the need for applications requiring a wet location listing such as showers or kitchens.

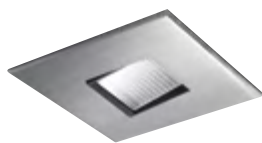
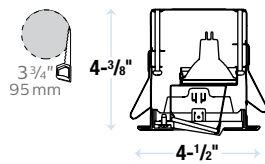


Downlighting
.....
Conventional sources
.....
LytePoints
.....

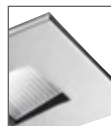
Lensed wall wash ★★★

Die-cast aluminum faceplate with choice of four flange treatments.

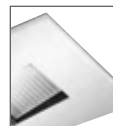
example: 346**WSTX**



WSTX 
Brushed
steel flange
& frosted lens



WCMX
Chrome flange
& frosted lens

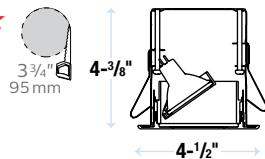


WWHX
White flange
& frosted lens

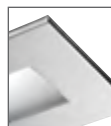
Adjustable lensed shower light ★★★

Die-cast aluminum faceplate with choice of four flange treatments.

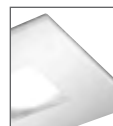
example: 347**ASTX**



ASTX   
Brushed
steel flange
& frosted lens



ACMX
Chrome flange
& frosted lens

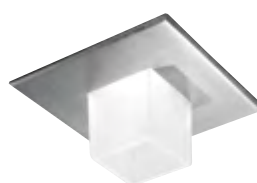
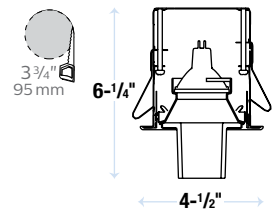


AWHX
White flange
& frosted lens

Drop Glass ★★★

Die-cast aluminum faceplate with choice of three flange treatments.

example: 341**DSTX**



DSTX 
Brushed
steel flange
& frosted glass



DCMX
Chrome flange
& frosted glass



DWHX
White flange
& frosted glass

New Construction (Non-IC)

302MREX	302MRSPX
50W MR16	
37W MR16IR	

Remodeler (Non-IC)

300MRSPX	3401MREX	303MRE
37W MR16IR		N/A

New Construction (IC)

302MRIC7SPX	302MRIC9SPX
37W MR16IR*	37W MR16IR

New Construction (AirSeal IC)

302MRAICSPX	302MRAICEX
35W MR16	

New Construction (Non-IC)

302MREX	302MRSPX
50W MR16	
37W MR16IR	

Remodeler (Non-IC)

300MRSPX	3401MREX	303MRE
37W MR16IR		N/A

New Construction (IC)

302MRIC7SPX	302MRIC9SPX
37W MR16IR	50W MR16
	37W MR16IR

New Construction (AirSeal IC)

302MRAICSPX	302MRAICEX
35W MR16	

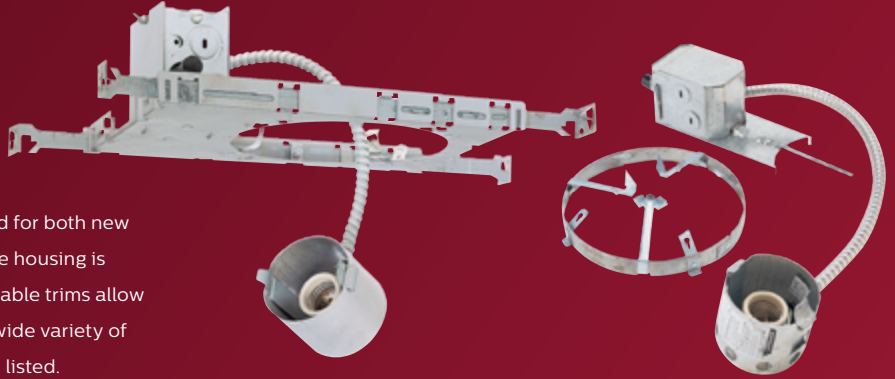
* Adjustable baffle (346) is not available with 37 MR16IR for 302MRIC7SPX configurations.
Note: Trims accommodate all ceiling types (1/8" to 1" thick).

LyteCaster

round 3³/₄" aperture downlights

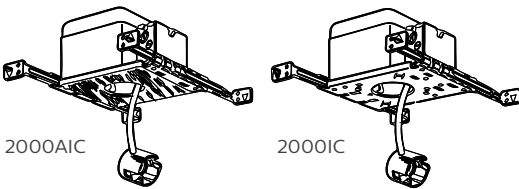
Incandescent

Standard voltage and hydroform downlights were designed for both new construction and remodel, IC and Non-IC applications. The housing is made of corrosion-resistant galvanized metal. Interchangeable trims allow for a variety of lighting effects, and are compatible with a wide variety of incandescent lamps, with some being models wet location listed.



Standard voltage

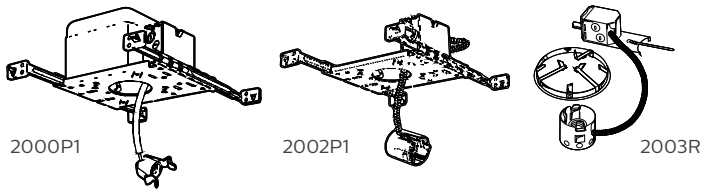
New Construction (IC)



Series	
<input type="text"/>	
2000AIC	New construction AirSeal IC housing
2000IC	New construction IC housing

Standard voltage

New Construction & Remodeler (Non-IC)



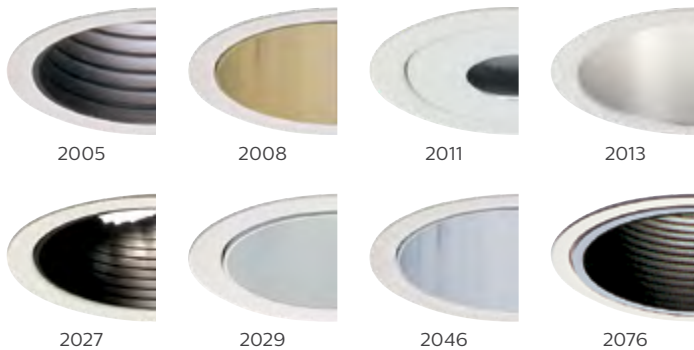
Series	
<input type="text"/>	
2000P1	New construction Non-IC housing
2002P1	New construction Non-IC frame
2003R	New construction Non-IC remodeler

Compatible lamping and trims

Style		
<input type="text"/>		
45W PAR16, 50W R20 / PAR20	45W PAR16, 50W R20	50W PAR20 (wet location)
2005 Metal step baffle	2022 Eyeball baffle	2084 Open
2008 Brushed gold cone	2027 Adj. baffle	2090 Lensed
2013 Specular cone	2029 Adj. cone	
2016 Splay cone		
2017 Groove baffle		
2022 Eyeball baffle		
2076 Plastic baffle		

Compatible lamping and trims

Style		
<input type="text"/>		
40W A19, 50W PAR20, 75W R20 / PAR16	50W R20, 60W PAR16	50W PAR20 (wet location)
2005 Metal step baffle	2016 Splay cone ¹	2084 Open ²
2008 Brushed gold cone	2017 Groove baffle ¹	2090 Lensed
2013 Specular cone		
2076 Plastic baffle		
50W PAR20, 75W R20 / PAR16	60W BT15	40W A19, 45W PAR16, 50W R20 / PAR20
2022 Eyeball baffle ^{2,3}	2046 Specular deep cone	2011 Pinhole ^{2,4}
2027 Adj. baffle ^{2,3}	2096 Wall wash	
2029 Adj. cone ^{2,3}		



1. Replace 60W PAR16 with 75W PAR16 for 2003R configurations.
2. Not compatible with 2000P1 configurations.
3. Not compatible with 20003R configurations.
4. Replace 45W PAR16 with 60W PAR16 for 2003R configurations.

LyteCaster

round 3 3/4" aperture downlights

Incandescent

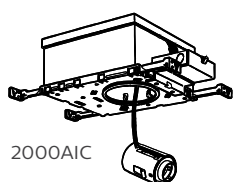
Luminaires that fill that need for new construction and remodeling in IC and Non-IC rated ceilings. Customize your downlighting for each application with the most commonly requested flanges, baffles, and cones.



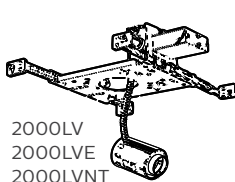
Downlighting
.....
Conventional sources
.....
LyteCaster
.....

Low voltage

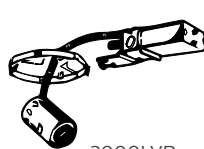
New Construction & Remodeler (Non-IC/IC)



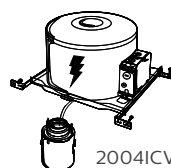
2000AIC



2000LV
2000LVE
2000LVNT



2000LVR



2004ICV

Series

2000AICV	New construction, AirSeal IC housing
2000LV	New construction, Magnetic Non-IC frame
2000LVE	New construction, Electronic Non-IC frame ("1" suffix for 120V 0.67A max or "2" suffix for 277V 0.27A max)
2000LVNT	New construction, Remote transformer Non-IC frame
2000LVR	New construction, Non-IC remodeler
2004ICV	Lyteneing, New construction, AirSeal IC frame with screws ("N" suffix for nails)

Compatible lamping and trims

Style

Styles	Most frames	2000AICV	2000LVNT	Styles (low voltage only)	Most frames	2000AICV	2000LVNT	2004ICV
2005 Metal step baffle	50W MR16	35W MR16	42W MR16	2006 LV Pinhole	50W MR16	35W MR16	42W MR16	37W MR16
2008 Brushed cone	50W MR16	35W MR16	42W MR16	2022LV LV Eyeball baffle	50W MR16	35W MR16	42W MR16	50W MR16
2011 Pinhole	50W MR16	35W MR16	42W MR16	2090LV LV Wet location	50W MR16	37W MR16	50W MR16	37W MR16
2013 Specular cone	50W MR16	35W MR16	42W MR16	Styles (low voltage only)				
2016 Splay cone	50W MR16	—	—		Most frames	2000AICV	2000LVNT	2000LVR
2017 Groove baffle	50W MR16	—	—	2025 LV Mini-swivel ²	50W MR16	—	42W MR16	37W MR16
2026 Plastic baffle ¹	50W MR16	35W MR16	42W MR16	2026 LV Shower light	50W MR16	—	42W MR16	37W MR16



2005



2008



2011



2013



2016



2017



2026



2090LV



2006



2022LV



2025



2026

1. Also compatible with 37W MR16 IR for 200LV and 2004ICV configurations

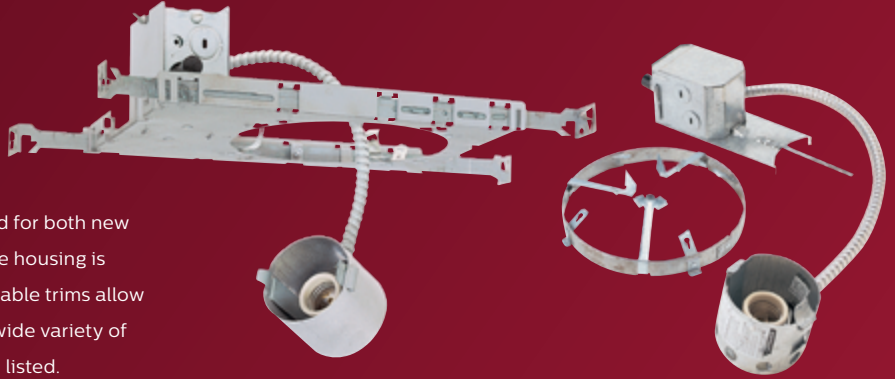
2. Also compatible with 37W MR16 with 2000LV configurations.

LyteCaster

round 5 1/4" aperture downlights

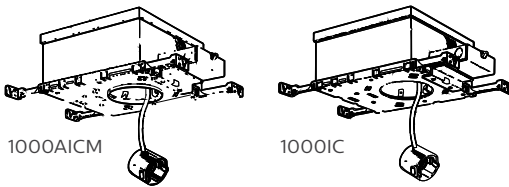
Incandescent

Standard voltage and hydroform downlights were designed for both new construction and remodel, IC and Non-IC applications. The housing is made of corrosion-resistant galvanized metal. Interchangeable trims allow for a variety of lighting effects, and are compatible with a wide variety of incandescent lamps, with some being models wet location listed.



Standard voltage

New Construction (IC)



1000AICM

1000IC

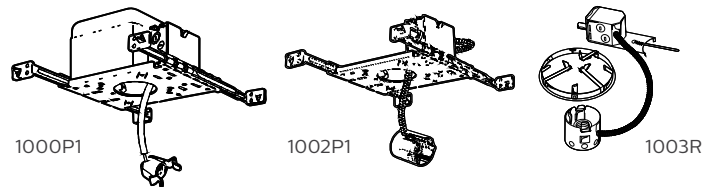
Series



1000AICM New construction AirSeal IC housing
1000IC New construction IC housing

Standard voltage

New Construction & Remodeler (Non-IC)



1000P1

1002P1

1003R

Series



1000P1 New construction Non-IC housing
1002P1 New construction Non-IC frame
1003R New construction Non-IC remodeler

Compatible lamping and trims

Style



40W A19, 75W PAR30, 65W BR30	40W A19	60W A19
1005 Metal step baffle	1021 Opal glass	1046 Specular deep cone
1008 Brushed cone	1035 Eyelid baffle	1096 Wall wash ¹
1013 Specular cone	wall wash	
1071 White reflector	1078 Opalex drop lens ²	
1076 Plastic baffle	1085 Eyelid wall wash	
		60W PAR30
		1084 Open ²
75W PAR16/ PAR30S, 50W PAR20	75W R20, 50W PAR20	60W PAR30S
1027 Adj. accent	1022 Eyeball baffle	1090 Etched lens ²
75W PAR16, 50W PAR20/ PAR30	1082 Eyeball	
1029 Adj. baffle & cone		

Compatible lamping and trims

Style



75W A19/ PAR30L/ BR30	60W A19, 75W BR30	75W A19
1005 Metal step baffle ³	1035 Eyelid baffle	1021 Opal glass
1008 Brushed cone ³	wall wash ³	1096 Wall wash ⁹
1013 Specular cone ³	1078 Opalex drop lens ^{2,7}	
1071 White reflector ^{3,4}	1085 Eyelid wall wash ⁷	100W A19
1076 Plastic baffle ^{3,5}		1046 Specular deep cone
	50W PAR20, 75W R20	
50W PAR20, 75W PAR16/ PAR30	1022 Eyeball baffle ⁸	75W PAR30L
1027 Adj. accent ⁶	1082 Eyeball	1084 Open ²
50W PAR20, 75W PAR16/ PAR30S	50W PAR30/ R20, 75W A19	1090 Etched lens ²
1029 Adj. baffle & cone	1011 Pinhole	



1. Not compatible with 1000AICM configurations.
 2. Product is wet location listed.
 3. Replace 75W BR30 with 85W BR30 for 1003R configurations.
 4. Replace 75W BR30 with 65W BR30 for 1000P1 or 1002P1 configurations.
 5. Replace 75W A19 with 60W A19 for 1000P1, 1002P1 or 1003R configurations.

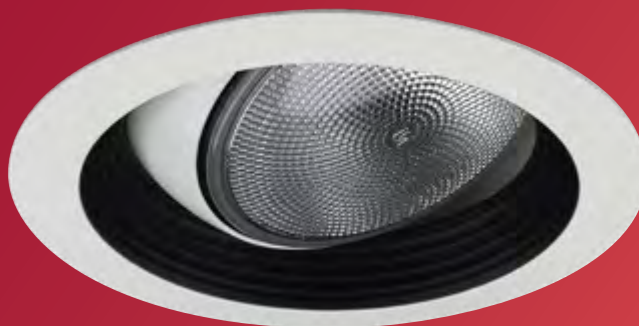
6. Not compatible with 1002P1 or 1003R configurations.
 7. Not compatible with 75W BR30.
 8. Not compatible with 1000P1 configurations.
 9. Not compatible with 1000P1 or 1003R configurations.

LyteCaster

round 5¼" aperture downlights

Incandescent

Luminaries that fill that need for new construction and remodeling in IC and Non-IC rated ceilings. Customize your downlighting for each application with the most commonly requested flanges, baffles, and cones.

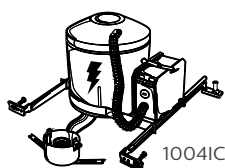


1088
Eyeball regressed

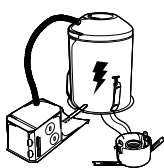
Downlighting
.....
Conventional sources
.....
LyteCaster
.....

Low voltage

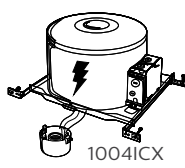
New Construction & Remodeler (Non-IC/IC)



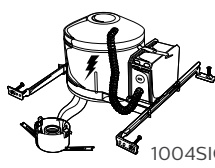
1004IC



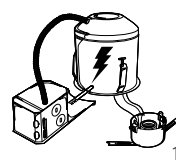
1004ICR



1004ICX



1004SIC



1004SICR

Series

1004IC	Lytening, convertible Non-IC/IC frame with screws ("N" suffix for nails, "Q" suffix for quick connect, "NQ" suffix for both)*
1004ICR	Lytening, convertible Non-IC/IC remodeler*
1004ICX	Lytening, high wattage AirSeal IC frame with screws ("N" suffix for nails, "Q" suffix for quick connect, "NQ" suffix for both)
1004SIC	Lytening, shallow convertible Non-IC/IC frame with screws ("N" suffix for nails)*
1004SICR	Lytening, shallow convertible Non-IC/IC remodeler*

Compatible lamping and trims (Non-IC applications)

Style		
1004IC/ICR only		
40W A19, 75W PAR30L, 75W BR30	50W PAR20, 75W R20	60W A19
1005 Metal step baffle	1022 Eyeball baffle	1046 Specular deep cone
60W A19, 75W PAR30, 85W BR30	1082 Eyeball	
1008 Brushed cone	50W PAR30, 65W BR30, 40W A19	75W PAR30
1013 Specular cone	1076 Plastic baffle	1081 Open
85W BR30, 75W PAR30, 52W A19	75W PAR30 (short neck)	75W PAR30S
1071 White reflector	1088 Eyeball regressed	1090 Etched lens ³
1004SIC/SICR only		1004IC/SIC only
50W PAR30L, 60W BR30	50W PAR30, 65W BR30	65W BR30, 75W PAR30
1005 Metal step baffle	1008 Brushed cone	C71 Spec. cone ¹
	1013 Specular cone	C76 Spun baffle ¹
1004ICX only (Non-IC/IC applications)		
40W A19, 75W PAR30, 65W BR30	75W PAR30S/PAR16, 50W PAR20	60W PAR30S
1005 Metal step baffle	1027 Adj. accent	1090 Etched lens ³
60W A19, 75W PAR30, 85W BR30	75W R20, 50W PAR20	60W A19
1008 Brushed cone	1022 Eyeball baffle	1046 Spec. deep cone
1013 Specular cone	1082 Eyeball	1096 Wall wash

Compatible lamping and trims (IC applications)

Style		
1004IC/ICR only		
50W PAR30L, 60W BR30	50W PAR20, 75W R20	40W A19
1005 Metal step baffle	1022 Eyeball baffle	1046 Specular deep cone
40W A19, 50W PAR30, 65W BR30	1082 Eyeball	
1008 Brushed cone	50W PAR30, 65W BR30	75W PAR30
1013 Specular cone	1076 Plastic baffle	1081 Open
65W BR30, 50W PAR30	50W PAR30	
1071 White reflector	1088 Eyeball regressed	
1004SIC/1004SICR only		1004IC/SIC only
50W PAR30L, 60W BR30	50W PAR30, 65W BR30	65W BR30, 50W PAR30
1005 Metal step baffle	1008 Brushed cone	C71 Spec. cone ²
	1013 Specular cone	C76 Spun baffle ²
1004ICX only (Non-IC/IC applications)		
75W PAR30, 65W BR30, 52W A19	60W PAR30	
1071 White reflector	1084 Open ²	
75W PAR30L, 65W BR30, 40W A19	40W A19	
1076 Plastic baffle	1021 Opal glass	
	1035 Eyelid baffle wall wash	
	1085 Eyelid wall wash	

Note: See page to left for images of compatible trims.

1. Replace 75W PAR30 with 50W PAR30 for 1004SIC configurations.
2. Replace 50W PAR30 with 75W PAR30 for 1004SIC configurations.
3. Product is wet location listed.

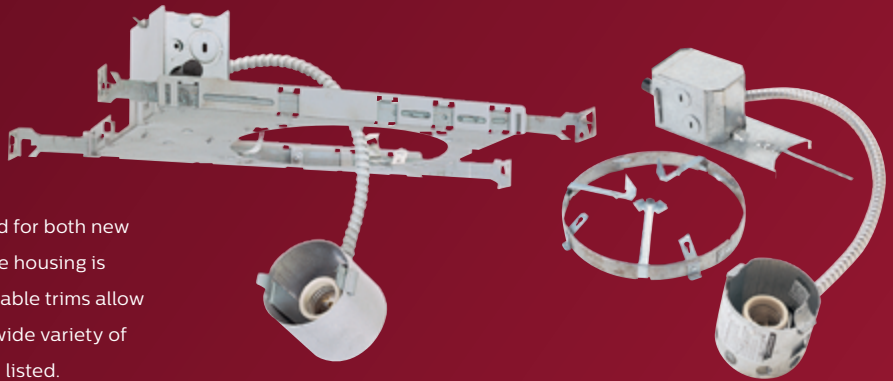
* Optional **LAS56** AirSeal kit available for new construction or **LAS56R** for remodeler.

LyteCaster

round 6 3/4" aperture downlights

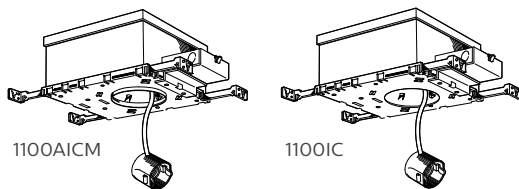
Incandescent

Standard voltage and hydroform downlights were designed for both new construction and remodel, IC and Non-IC applications. The housing is made of corrosion-resistant galvanized metal. Interchangeable trims allow for a variety of lighting effects, and are compatible with a wide variety of incandescent lamps, with some being models wet location listed.



Standard voltage

New Construction (IC)

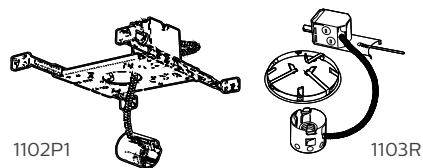


Series

1100AICM	New construction AirSeal IC housing
1100DAICM	New construction deep AirSeal IC housing
1100IC	New construction IC housing
1100DICM	New construction deep IC housing

Standard voltage

New Construction & Remodeler (Non-IC)



Series

1102P1	New construction Non-IC frame
1103R	New construction Non-IC remodeler

Compatible lamping and trims

Style		
40W A19	75W A19, 90W PAR38, 100W BR40	60W A19, 100W PAR38 / BR40
1177SH Opalex drop lens	1108 Brushed cone	1105 Metal step baffle
1178SH Opalex flush lens	1113 Specular cone	
60W A19, 90W PAR38, 100W BR40	100W A19	60W A19
1171 White reflector	1144 Shallow spec. cone	1121 Opal glass
75W PAR30, 85W BR30	85W BR30, 75W PAR30L	1126 Fresnel lens
1122 Eyeball baffle	1129 Shallow adjustable	1128 White diffuser
	1182 Eyeball	
1100IC / AICM only		
75W PAR30, 85W BR30, 90W PAR38	60W A19, 75W PAR30	90W PAR38, 120W PAR38
1170 White reflector	1132 Cross baffle	1154 Complete slope
90W PAR38	75W PAR30S, 65W BR30	52W A19 (1100IC only)
1190 Lensed	1131 Shallow slope	1185 Eyelid wall wash
75W PAR38 (outdoor rated)	75W PAR30S	
1184 Open	1133 Steep slope	
1100DIC / DAICM only (deep only)		
75W PAR30, 85W BR30	60W A19, 90W PAR38	75W A19
1170 White reflector	1132 Cross baffle	1196 Open wall wash
75W PAR38	100W A19 / PAR38, 85W BR30	60W A19, 60W BR30
1190 Lensed	1146 Specular deep cone	1135 Eyelid baffle wall wash

Compatible lamping and trims

Style		
100W A19	100W A19	75W A19
1144 Shallow spec. cone	1121 Opal glass	1178SH Opalex flush lens
100W A19, 150W A21, 90W BR40	1126 Fresnel lens	
1128 White diffuser	1128 White diffuser	60W A19
1135 Eyelid baffle wall wash	1185 Eyelid wall wash	1177SH Opalex drop lens
100W A19, 150W A21, 85W BR30	100W A19, 150W PAR38 / BR40 / A21	75W PAR30, 85W BR30
1146 Specular deep cone	1105 Metal step baffle	1122 Eyeball baffle
75W PAR38 (outdoor rated)	1108 Brushed cone	75W PAR30L, 85W BR30
1184 Open	1113 Specular cone	1182 Eyeball
75W PAR30, 85W BR30, 75W A19	1176 Plastic baffle	120W PAR38
1170 White reflector	1151 Deep shallow specular cone	1190 Etched lens
100W A19, 250W R40 IR, 150W PAR38 / BR40	100W A19, 150W PAR38	
1171 White reflector	1132 Cross baffle	
1102P1 only		
90W PAR38, 85W BR30	150W A21, 100W A19	
1129 Shallow adjustable	1196 Open wall wash	

LyteCaster

round 6³/₄" aperture downlights

Incandescent

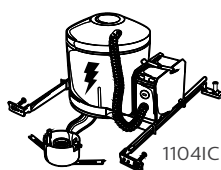
Luminaires that fill that need for new construction and remodeling in IC and Non-IC rated ceilings. Customize your downlighting for each application with the most commonly requested flanges, baffles, and cones.



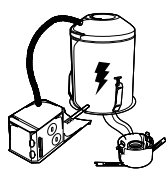
Downlighting
Conventional sources
LyteCaster

Low voltage

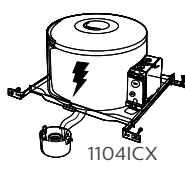
New Construction & Remodeler (Non-IC/IC)



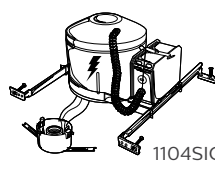
1104IC



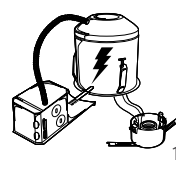
1104ICR



1104ICX



1104SIC



1104SICR

Series

1104IC	Lytening, convertible Non-IC/IC frame with screws ("N" suffix for nails, "Q" suffix for quick connect, "NQ" suffix for both)*
1104ICR	Lytening, convertible Non-IC/IC remodeler*
1104ICX	Lytening, high wattage AirSeal IC frame with screws ("N" suffix for nails, "Q" suffix for quick connect, "NQ" suffix for both)
1104SIC	Lytening, shallow convertible Non-IC/IC frame with screws ("N" suffix for nails)*
1104SICR	Lytening, shallow convertible Non-IC/IC remodeler*

Compatible lamping and trims (Non-IC applications)

Style		
1104IC/ICR only		
100W A19, 75W PAR30, 85W BR30	85W BR30, 75W PAR30L	45W PAR38
1144 Shallow spec. cone	1182 Eyeball	1190 Etched lens
100W A19/PAR38, 150W BR40	120W PAR38/BR40	75W A19
1108 Brushed cone	1116 Splay	1121 Opal glass
1113 Specular cone	1117 Baffle	1177LX Flush glass
75W A19, 150W PAR38, 120W BR40	60W A19, 75W PAR30, 100W PAR38	52W A19 (wet location)
1171 White reflector	1132 Cross baffle	1178LX Lexan dish
75W A19, 90W PAR38, 120W BR40	75W PAR30, 85W BR30	75W PAR38 (wet location)
1105 Metal step baffle	1170 White reflector	1181 Open (outdoor rated)
100W PAR38	75W PAR30 (long neck), 85W BR30	60W A19
1190 Metal step baffle	B16 Shallow splay	1126 Fresnel lens
60W A19, 90W PAR38, 85W BR30, 120W BR40	B17 Shallow baffle	1128 White diffuser
1176 Plastic baffle	40W A19 (wet location)	1185 Eyelid wall wash
	1177SH Flush lens	
	1178SH Drop lens	

1104ICX only (Non-IC/IC applications)

60W A19, 100W PAR38/BR40	60W PAR38	52W A19, 75W PAR30
1105 Metal step baffle	1190 Etched lens	1132 Cross baffle
60W A19, 100W PAR38, 120W BR40	75W PAR30, 85W BR30	75W PAR30S, 65W BR30
1108 Brushed cone	1170 White reflector (also 90W PAR38)	1131 Shallow slope
1113 Specular cone	1122 Eyeball baffle	1133 Steep slope
	1182 Eyeball (75W PAR30L)	

Compatible lamping and trims (IC applications)

Style		
1104IC/ICR only		
75W A19/PAR30, 85W BR30	75W PAR30L, 85W BR30	45W PAR38
1144 Shallow spec. cone	1182 Eyeball	1190 Etched lens
60W A19, 75W PAR38, 65W BR40	60W PAR38, 75W PAR30/BR40	40W A19
1108 Brushed cone	1116 Splay	1121 Opal glass
1113 Specular cone	1117 Baffle	1177LX Flush glass
52W A19, 75W PAR38, 85W BR40	40W A19, 50W PAR30	1178LX Lexan dish
1171 White reflector	1132 Cross baffle	75W PAR38 (wet location)
40W A19, 75W PAR38/BR30, 65W BR40	75W PAR30, 90W PAR38, 85W BR30	1181 Open (outdoor rated)
1105 Metal step baffle	1170 White reflector	60W A19
45W PAR38	60W PAR38, 75W PAR30 (long neck)	1185 Eyelid wall wash
1190 Metal step baffle	B16 Shallow splay	
40W A19, 75W PAR38, 65W BR30/BR40	B17 Shallow baffle	
1176 Plastic baffle		

Note: See page to left for images of compatible trims.

* Optional **LAS56** AirSeal kit available for new construction or **LAS56R** for remodeler.

Lytecaster Performance

round 5 1/4" aperture downlights

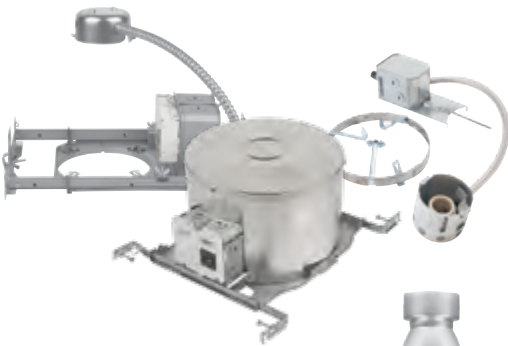
Compact fluorescent

Only part of the performance of this product comes from its use of energy efficient, and high performing LED lamps. Pair that with the Philips Lightolier reflectors, trims, lenses and domes, and you have a downlight highly designed for more demanding commercial new construction or remodels. Just like all of the LyteCaster family, the housing is constructed of galvanized steel for the longevity you need in commercial spaces.



Performance

New Construction & Remodeler (Non-IC/IC)



Compatible lighting

13W Quad/Triple

GX24q-1 base
120V - 0.13amp (max)
277V - 0.06amp (max)

18W Triple

GX24q-2 base
120V - 0.17amp (max)
277V - 0.08amp (max)

26W Triple

GX24q-3 base
120V - 0.24amp (max)
277V - 0.11amp (max)

Frame

Series	Model	Lamping	Option
1001			
1001 Compact fluorescent	F New Construction	13 13W Quad/Triple 18 18W Triple 26 26W Triple	U Universal (Non-IC) ¹ ICU Universal (Airseal IC) for horizontal only ¹
	FR Remodeler ²	18 18W Triple 26 26W Triple	U Universal (Non-IC)

Reflector

Series	Orientation	Finish	Style
1001			
1001 Compact fluorescent	V Vertical ³	CL Specular clear	— Open
		CD Clear diffuse	SW Single Wall Wash
		WH White (matte)	DW Double Wall Wash
	H Horizontal	CL Specular clear	— Open
		CD Clear diffuse	SW Single Wall Wash
		WH White (matte)	C Clear lens (wet location) F Fresnel lens (wet location) O Opal lens (wet location)
		A Aluminum	CB Crossblade
		WH White (matte)	

Trim

Performance specular cone	Specular cone	Brushed satin cone	Baffle	Open wall wash	Eyelid baffle wall wash	Eyelid wall wash
1013CFL ³ 1013CDCFL ³	1012 ⁴ 1013 ⁴ 1013BK ⁴ 1013WH 1013CD ⁴ 1045 1046/1046CD 1071 C71	1008 ⁴ 1010 ⁴	1005 ⁴ 1005BNM 1005WH 1076 1076WH C76	1095 1096 1096CD	1035 1035WH	1085

Pinhole	Opal glass	Glass dome	Opalex drop lens
1011	1021 ⁵	1024	1078

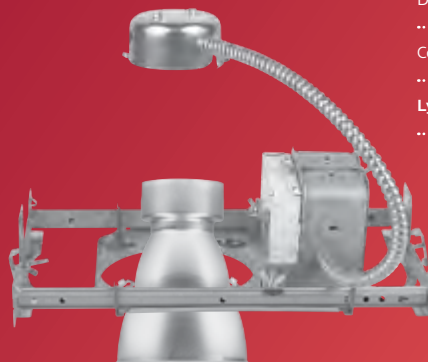
1. Add N suffix for preset nails.
2. Not compatible with 13W Quad/Triple lamping.
3. Not compatible with IC frames (ICU/ICUN).
4. Add NM suffix for Natural Metal flange and finish.
5. Trim is only compatible with 13W and 18W Quad lamps.

Lytecaster Performance

round 6 3/4" aperture downlights

Compact fluorescent

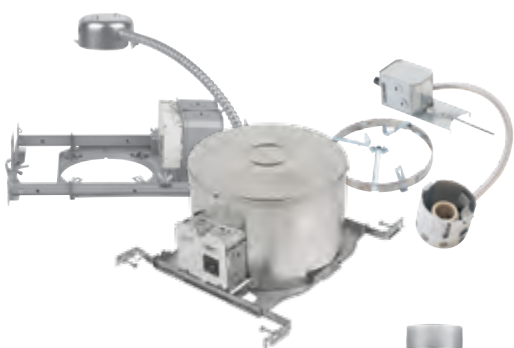
Only part of the performance of this product comes from its use of energy efficient, and high performing LED lamps. Pair that with the Philips Lightolier reflectors, trims, lenses and domes, and you have a downlight highly designed for more demanding commercial new construction or remodels. Just like all of the LyteCaster family, the housing is constructed of galvanized steel for the longevity you need in commercial spaces.



Downlighting
.....
Conventional sources
.....
Lytecaster
.....

Performance

New Construction & Remodeler (Non-IC/IC)



Compatible lamping

18W Quad/Triple

GX24q-2 base
120 V - 0.17 amp (max)
277 V - 0.08 amp (max)

26W Quad/Triple

GX24q-3 base
120 V - 0.24 amp (max)
277 V - 0.11 amp (max)

32W Triple

GX24q-3 base
120 V - 0.31 amp (max)
277 V - 0.13 amp (max)

42W Triple

GX24q-4 base
120 V - 0.38 amp (max)
277 V - 0.17 amp (max)



Frame

Series	Model	Lamping	Option
1101			
1101 Compact fluorescent	F New Construction	18 18W Quad/Triple 2642 26W Quad/Triple 32W & 42W Triple	U Universal (Non-IC) ¹ ICU Universal (Airseal IC) for horizontal only ¹
	FR Remodeler	18 18W Quad/Triple 2642 26W Quad/Triple 32W & 42W Triple	U Universal (Non-IC)

Reflector

Series	Orientation	Finish	Style
1101			
1101 Compact fluorescent	- Vertical ²	CL Specular clear CD Clear diffuse WH White (matte)	— Open SW Single Wall Wash DW Double Wall Wash
	H Horizontal	CL Specular clear CD Clear diffuse WH White (matte)	— Open SW Single Wall Wash C Clear lens (wet location) F Fresnel lens (wet location) O Opal lens (wet location)
		A Aluminum WH White (matte)	CB Crossblade

Trim

Performance specular cone	Specular cone	Brushed satin cone	Baffle	Open wall wash	Eyelid baffle wall wash	Eyelid wall wash
1113CFL ² 1113CDCFL ²	1112 ³ 1113 ³ 1113BK ³ 1113WH 1113CD ³ 1143 1145 1146/1146CD 1144/1144CD	1108 ³ 1110 ³	1105 ³ 1105B ³ 1105WH 1176 1176WH	1195 1196 1196CD	1135 ² 1135WH ²	1185

Cross blade	Opal Glass	Glass Dome	Opalex flush lens	Opalex drop lens	Etched lens	Basic splay	Basic baffle
1132 ⁴	1121	1124	1177SH	1178SH	1190	1116	1117

1. Add N suffix for preset nails.

2. Not compatible with IC frames (ICU/ICUN).

3. Add NM suffix for Natural Metal flange and finish.

4. Not compatible with Retrofit frames.



C Plus

round 4" aperture downlights

New Construction housings / frames and remodelers

These 4" downlights are affordably priced for residential or soft commercial applications. Unlike some other models, this frame adjust vertically in the plaster frame to allow for variations in ceiling thickness and the self leveling frame ensures accurate positioning. Customize your downlighting for each application with the most commonly requested flanges, baffles, and cones.



P4ASIC
 New Construction (Airseal Non-IC/IC)

	Baffle	Adj. Gimbal	Fresnel Lens	Clear Cone
				
	P4BW Matte White	P4GW Matte White	P4F Matte White	P4RC Matte White
R20	35W	35W	35W	50W
PAR20	35W	35W	35W	50W



P4
 New Construction (Non-IC)

	Baffle	Adj. Gimbal	Fresnel Lens	Clear Cone
				
	P4BW Matte White	P4GW Matte White	P4F Matte White	P4RC Matte White
R20	50W	50W	35W	50W
PAR20	50W	50W	35W	50W



P4R
 Remodeler (Non-IC)

	Baffle	Adj. Gimbal	Fresnel Lens	Clear Cone
				
	P4BW Matte White	P4GW Matte White	P4F Matte White	P4RC Matte White
R20	50W	50W	35W	50W
PAR20	50W	50W	35W	50W

C Plus

round 6" aperture downlights

New Construction housings / frames and remodelers

These 6" downlights are affordably priced for residential or soft commercial applications whether it is an IC or Non-IC installation. Unlike some other models, this frame adjusts vertically in the plaster frame to allow for variations in ceiling thickness and the self leveling frame ensures accurate positioning. Customize your downlighting for each application with the most commonly requested flanges, baffles, and cones.



PR75ASICNB

New Construction
(Airseal Non-IC/IC)



	Cone	Cone	Large Flange	Splay	Eyeball
					
	RBA100CLR Clear Cone Clear Flange	RC30C Clear Cone White Flange	RF30W White Flange Cone/Flange	RS30W Matte White Cone/Flange	R18P Matte White Flange
PAR30L	75W	75W	—	—	—
PAR30	50W	50W	50W	75W	75W
R/BR30	75W	75W	—	75W	75W
PAR38	90W	90W	—	—	—
R/BR40	90W	—	—	—	—
A19	75W	—	—	—	—

CRR1NBQP

Remodeler
(Airseal Non-IC/IC)



PAR30L	75W	75W	75W	75W	75W
PAR30	75W / 50W	75W / 50W	75W / 50W	75W	—
R/BR30	—	75W	75W / 65W	75W	100W / 75W
PAR38	90W	150W / 90W	—	—	—
R/BR40	—	—	—	—	—
A19	—	—	—	—	—

QL6NBQP

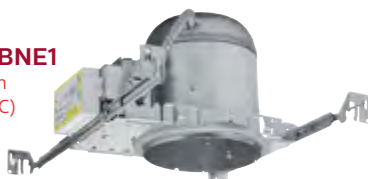
New Construction
(Airseal Non-IC/IC)
QuikLights



PAR30L	75W	75W	—	—	75W
PAR30	75W / 50W	75W / 50W	75W / 50W	75W	—
R/BR30	75W	75W	—	75W	75W
PAR38	150W / 90W	100W / 90W	—	—	—
R/BR40	150W / 90W	—	—	—	—
A19	75W	—	—	—	—
A21	150W / —	—	—	—	—

PR26ASICNBNE1

New Construction
(Vertical Airseal IC)



	Cone	Cone	BR30, PAR38/30 Grooved Baffle	BR30, PAR38/30 Grooved Baffle Cone	Vertical Regressed Shower
					
	RBA100CLR Clear Cone Clear Flange	RC30C Clear Cone White Flange	RB30W Matte White	RBC30WM Matte White	SHR6ICW Matte White
TTT	26W	26W	26W	26W	26W

C Plus

round 6" aperture downlights

New Construction housings / frames and remodelers

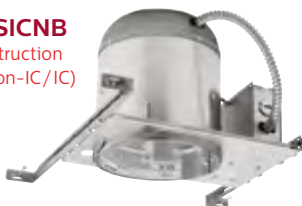
Below are more 6" downlights for residential or soft commercial applications whether it is an IC or Non-IC installation. Unlike some other models, this frame adjusts vertically in the plaster frame to allow for variations in ceiling thickness and the self leveling frame ensures accurate positioning. Customize your downlighting for each application with the most commonly requested flanges, baffles, and cones.



Downlighting
.....
Conventional sources
.....
CPlus
.....

PR75ASICNB

New Construction
(Airseal Non-IC/IC)



	BR40, PAR38 Grooved Baffle	BR30, PAR38/30 Grooved Baffle	BR30, PAR38/30 Grooved Baffle	BR30, PAR38/30 Grooved Baffle Cone	BR30, PAR38/30 Grooved Baffle Cone	Regressed Lens	Drop Opal Shower
							
	RB40W Matte White	RB30W Matte White	RB30 Matte Black	RBC30M Matte Black	RBC30WM Matte White	SHR12IC Matte White	SHR16IC Matte White
PAR30L	75W	75W	75W	75W	75W	—	—
PAR30	50W	50W	50W	50W	50W	—	—
R/BR30	75W	75W	75W	75W	75W	—	—
PAR38	90W	90W	90W	90W	90W	—	—
R/BR40	90W	—	—	—	—	—	—
A19	—	—	—	—	—	25W	25W

CRR1NBQP

Remodeler
(Airseal Non-IC/IC)



PAR30L	75W	75W	75W	50W	50W	—	—
PAR30	75W / 50W	50W / 75W	50W / 75W	50W	50W	—	—
R/BR30	75W	75W	75W	75W	75W	—	—
PAR38	150W / 90W	150W / 90W	150W / 90W	90W	90W	—	—
R/BR40	150W / 90W	—	—	—	—	—	—
A19	—	—	—	—	—	60W / 25W	25W

QL6NBQP

New Construction
(Airseal Non-IC/IC)
QuikLights



PAR30L	75W	75W	75W	75W	75W	—	—
PAR30	75W / 50W	75W	75W	75W / 50W	75W / 50W	—	—
R/BR30	75W	100W / 75W	100W / 75W	75W	75W	—	—
PAR38	150W / 90W	150W / 60W	150W / 60W	150W / —	150W / —	—	—
R/BR40	150W / 75W	—	—	—	—	—	—
A19	—	—	—	—	—	75W / 25W	75W / 40W

R9ASIC

New Construction
(Shallow Airseal IC)



	Grooved Baffle	Spay	Eyeball	Drop Opal Shower
				
	RBS30W Matte White (shallow)	RS30W Matte White Cone/Flange	R18P Matte White Flange	SHR16IC Matte White
PAR30L	75W	75W	75W	—
R/BR30	65W	65W	65W	—
A19	—	—	—	25W

RR9ASIC

Remodeler
(Shallow Airseal IC)



PAR30L	75W	—	75W	—
PAR30	—	50W	—	—
R/BR30	45W	45W	45W	—
A19	—	—	—	25W

Accessories

Thermal protector replacement

Frame-in kit	Part#	Order/Pulse#
1004ICV	LH-1209K	921250
1004ICX	LH-3334B	932301
1104ICX	LH-3332A	932244
1004IC, 1004ICR, 1004SIC, 1004SICR, 1104IC	LH-3334	929895
2004ICV	MI-5481C	931759
1102P1, 1002P1, 1003R, 2003R, 2000LV, 2000LVR, 2002P1	SK-3075	916970
1000LVNT, 2000LVNT	LH-1209K	921250
1000P1, 1100P1	SK-3101	923096
1000IC, 1000ICV, 1000AICM, 1100AICM, 1100DAICM	MI-7400	898640
1000LV, 1000LVR	SK-3104	917117
2000P1, 2000IC, 2000AIC, 2000AICV	SK-3113	925696
1700P1	SK-3114	926417

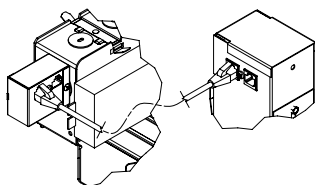
Note: Please refer to part# and pulse# when ordering.

MR16 socket replacement



HC356: Dedicated hole saw reduces installation time. Completely adjustable cutter comes with Lytecaster template. Place cutting elements in the holes labeled for the frame you are using and tighten. Durable dust shield eliminates clean-up even when remodeling. Comes with additional drill bits, extra cutting elements and contractor pencil all housed in a convenient, durable plastic case.

Daylight harvesting kit



DHMI: CAT5 J-Box adapter
UL2F-EZR: Daylight Sensor
39-30256-000 CSP: CAT5 cable

Expand your energy saving options with the inclusion of daylight harvesting. This 3-part system can daisy chain any 0-10v dimming product in 10 foot increments.

Medium base socket extender



1968: For 50W and 75W short neck PAR30 lamps only. Limited compatibility (see individual reflector trim data). Adds 1 1/4" to length.

MR16 socket replacement



1975A: For series 1000LV frame-in kits and 1152 & 1161 trims.

1975B: For series 2000LV frame-in kits and 1052LV trim.

1975TAL: For GE turn and lock lamps.

Lytening AirSeal gasket kits



LAS56: Converts housings* 1104IC, 1004IC, 1004SIC, 1104FI to comply with Model Energy Code and Washington State Energy Code air leakage requirements.

*Use with Lytening new construction housings (1104IC, 1004IC, 1104SIC, 1004SIC, 1104FI) only if factory installed tape or knockouts have been removed.



LAS56R: Converts remodelers* 1104ICR, 1004ICR, 1004SICR, 1104FIR to comply with Model Energy Code and Washington State Energy Code air leakage requirements.

Retaining clips

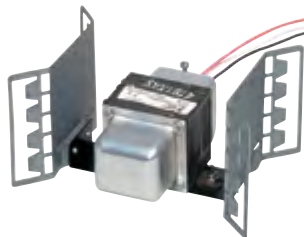


1955: For installation in existing ceilings. Box of 100. For Series 2000, 1000, 1100 (except Basic reflectors, Deep and shallow specular reflectors). 1 1/4" maximum ceiling thickness.

MR16 filters & louvers

Diffusion filters	Catalog No.
Symmetric 55°	AF2SY
Asymmetric 5 x 55°	AF2AS
Perimeter frost	AF2PF
Soft focus	AF2SF
Specialty louvers	Catalog No.
Ultraviolet reduction	AF2UV
Infrared reduction	AF2IR

277V Operation remote step-down transformer



7997: Supplies 120v fixture from a 277v branch circuit (20 amp. minimum). Can be used for multiple fixtures (not to exceed 300W maximum load).

Spread lens & beam elongator



0088SY: Symmetric prismatic spread lens. Compatible with 378X and 478X Elbow series.

Mounting bars



1964*: 20" mounting bar extenders (set of 2). For 2000, 1000 series.

1966*: Standard length (13") mounting bars (set of 4). For 2000, 1000 series (except IC).

1976*: 13" replacement bars (set of 4). For 1100 series and IC frame-in kits.

1977: Lytensing mounting bars.

*Not for use with Lytensing frame-in kits.

Thick ceiling adapter



300XTC: Allows installation of LytePoints 300 Series trims in ceilings up to 2 3/4" thick.

Compatibility

You can still get the cost savings benefits of LEDs by using Philips LED lamps

MR16 conventional to LED sources

ExpertColor							
							
50W halogen	6.5W F25 80CRI LED	7W S15 80CRI LED	7W F25 80CRI LED	7W S10 90CRI LED	7W F25 90CRI LED	7W F35 90CRI LED	8.5W F25 80CRI LED
	454538 (22K-2700K)	461525 (2700K)	461558 (2700K)	470138 (2700K)	470161 (2700K)	470195 (2700K)	457507 (2700K)
	470336 (3000K)	461533 (3000K)	461566 (3000K)	470146 (3000K)	470179 (3000K)	470203 (3000K)	457515 (3000K)
	6.5W F35 80CRI LED	461541 (4000K)	461574 (4000K)	470153 (4000K)	470187 (4000K)	470211 (4000K)	457523 (4000K)
	454546 (22K-2700K)		7W F35 80CRI LED	7W S10 90CRI	7W F25 90CRI	7W F35 90CRI	8.5W F35 80CRI LED
	470344 (3000K)		461582 (2700K)	Retail LED	Retail LED	Retail LED	457531 (2700K)
			461590 (3000K)	470229 (3000K)	470237 (3000K)	470245 (3000K)	457549 (3000K)
			461608 (4000K)				457556 (4000K)

BR30 conventional to LED sources

Warm glow effect

		
65W Incandescent	8W 80CRI LED	9W 80CRI LED
	458067 (5000K)	457044 (22-2700K)
	9.5W 90CRI LED	458109 (2700K)
	465203 (2700K)	

BR40 conventional to LED sources

Warm glow effect





	
75W Incandescent	10W 80CRI LED
	457010 (22-2700K)
	459834 (5000K)

R20 conventional to LED source



	
45W halogen	6W 80CRI LED
	456979 (22-2700K)

A19 conventional to LED source

Warm glow effect

			
60W halogen/ incandescent	9W 80CRI LED	9.5W 80CRI LED	14W 80CRI LED
	459057 (3000K)	461269 (2700K)	455683 (2700K)
	455881 (5000K)	463018 (5000K)	455717 (5000K)
	464973 (5000K)	455824 (22-2700K)	
	464965 (22, 27, 5000K)	464957 (22, 27, 5000K)	





PAR20 conventional to LED source

		
50W halogen	7W F25 80CRI LED	7W F40 80CRI LED
	471110 (3000K)	471144 (3000K)
	471128 (4000K)	471151 (4000K)
	471102 (22-2700K)	471136 (22-2700K)

PAR30S short neck conventional to LED source




ExpertColor

ExpertColor

			
50W halogen	12W S10 90CRI LED	12W F25 90CRI LED	12W F25 80CRI LED
	470898 (2700K)	470906 (2700K)	467878 (2700K)
	471060 (3000K)	471094 (3000K)	467886 (3000K)
	471789 (4000K)	470930 (4000K)	467894 (4000K)
		12W F40 90CRI LED	12W F40 80CRI LED
		467902 (2700K)	470914 (2700K)
		467910 (3000K)	471086 (3000K)
		467928 (4000K)	470948 (4000K)

PAR30L long neck conventional to LED source

ExpertColor

		
75W halogen	12W F25 90CRI LED	12W F40 80CRI LED
	470954 (2700K)	467845 (2700K)
	471045 (3000K)	467852 (3000K)
	470970 (4000K)	467860 (4000K)
	12W F40 90CRI LED	12W F25 80CRI LED
	470962 (2700K)	467811 (2700K)
	471052 (3000K)	467829 (3000K)
	470988 (4000K)	467837 (4000K)

Supporting your shelf stocking requirements



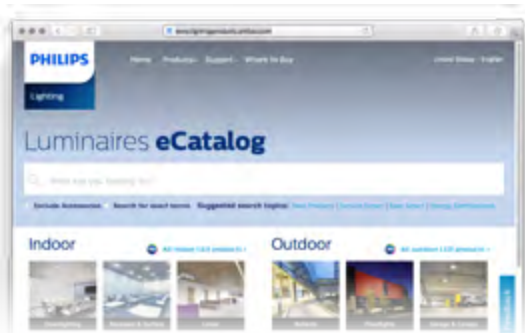
The goal of our service program is to ensure that we fully support your shelf stocking requirements and provide you with reliable lead times to address the demanding time-lines of construction and retrofit lighting projects. This program allows you to select the product and corresponding lead time to meet the needs of your customer's specific project. Stocked products will be shipped within 48hrs from our warehouses.*

For the most up-to-date guide with stock and quick ship products please contact your local Philips Sales Manager.

Distributor Stock products: are a subset of the Service Smart items that should be maintained on distributor shelves at all times to manage everyday contractor demand.

Quick Ship 10 products: will be assembled to order and ship within 2 weeks from our factories*.

Digital tools at your fingertips



The Philips Luminaire eCatalog is available at philips.com/luminaires and provides you and your customers with fast ways to identify the right product for their specific project.

1. **Search:** product family, product code, or product type.
2. **Find:** Up-to-date product information so you can always find current specs and product specific literature.
3. **Use:** Drop down menus to help you further refine your search to find the exact product to fit your needs.

ProLuminaire Mobile App



ProLuminaire

Providing mobile access to professional lighting solutions wherever you are on your iOS or Android device. An inspiring, convenient and fast way to view our entire luminaire and controls catalog of products. The ProLuminaire Mobile App provides users with...

- Mobile access to the entire professional lighting solutions for iOS and Android platforms (phones and tablets).
- A variety of fast ways to search for your product: by product type, brand, product name, product family code, and more.
- Media resources center to view product videos, brochures or presentations along with product and application images.
- Quick downloads and information sharing, including product literature such as spec sheets and installation documents.

Find out more at philips.com/ProLuminaireApp for more information.

Sustainability

A responsibility to excel

Philips Lightolier has an unmatched commitment to the downlighting industry with 65 years of continuous innovations and market leadership. It remains the trusted leader in LED downlighting with a reputation of technology leadership, reliability, and practical lighting solutions that beautifully illuminate your most important projects.



ENERGY STAR®

In 2006, Philips Lightolier introduced a full line of ENERGY STAR® certified CFL downlights. These products met the strict requirements of both ENERGY STAR® and California's Title 24 legislation. Available in both residential and commercial versions with over 40 trim options. Products continue to be designed to provide the best possible energy efficiency for every application. Since then we have expanded our ENERGY STAR® certified portfolio to include nearly all CFL and LED luminaires.

Title 24

The California Energy Code, part 6 of the California Building Standards Code which is Title 24 of the California Code of Regulations, was created by the California Building Standards Commission in 1978 in response to a legislative mandate to reduce energy consumption in the state. The standards are updated periodically by the California Energy Commission to allow consideration and possible incorporation of new energy efficiency technologies and methods.



Warranties

A standard 5-year limited warranty is included on all LED products and a standard 3-year limited warranty is included on all CFL & INC products. Philips Lightolier offers a wide range of high performance downlights with thousands of configurable solutions for use in multiple applications. All products are designed to be easily installed with a host of features that allow for fast and consistent installations and servicing. Visit www.philips.com/warranties for details and restrictions.



Underwriters Laboratories

The UL (Underwriters Laboratories) and CSA (Canadian Standards Association) are two separate independent safety science testing and certification agencies. If a product is cULus Listed, UL tested the product to meet all the requirements under the Canadian and US standards. Anything that has cULus mark is listed for use in both the United States and Canada. Visit www.ul.com for more information.



Nearly entire LED and CFL portfolio contains ENERGY STAR® certified luminaires.



Multiple LED and CFL products within portfolio offer California Title 24 compliant options.



A standard 5-year limited warranty is provided for all Philips Lightolier LED luminaires.



All LED, CFL and INC luminaires are cULus listed (many approved in damp or wet locations).

Energy efficiency

Philips Lightolier is committed to developing products that help meet the evolving energy conservation concerns by providing unsurpassed quality, exceptional performance and the latest technology in energy efficiency.



Distributor focus

With over 100 years of experience you can rest assured when trusting Philips Lightolier with all your lighting needs. The choice of off-the-shelf solutions or configure-to-order options allow for the flexibility to conform to any project's requirements – no matter the scale.

Contractor focus

With a wide range of product families, lighting source types and installation options means that seamlessly blending Philips Lightolier downlights into any commercial or residential area is a breeze. Mounting frames and reflector trims work seamlessly together for efficient and reliable results, while common aperture sizes provide the freedom of choice when unexpected project changes occur.



LED luminaires index

CP4R	Core Pro Downlight 4-inch round luminaires	13
CP5R	Core Pro Downlight 5-inch round luminaires	13
CP6R	Core Pro Downlight 6-inch round luminaires	13
FD4R	Flat Downlight 4-inch round luminaires	11
FD4S	Flat Downlight 4-inch square luminaires	11
FD6R	Flat Downlight 6-inch round luminaires	11
FD6S	Flat Downlight 6-inch square luminaires	11
FDRN	Flat Downlight round new construction plate	11
FDSN	Flat Downlight square new construction plate	11
L3	LyteCaster 3-inch accent luminaires	20
L4R	LyteCaster 4-inch round luminaires & engine	16 - 19
L5R	LyteCaster 5-inch round luminaires & engine	16 - 19
L6R	LyteCaster 6-inch round luminaires & engine	16 - 19
P4RD	LyteProfile 4-inch round luminaires	21
P6RD	LyteProfile 4-inch round wall wash luminaires	21
P4RLW	LyteProfile 4-inch round wall wash luminaires	21
P6RLW	LyteProfile 4-inch round wall wash luminaires	21
RD4R	Retrofit Downlight 4-inch round luminaires	12
RD5R	Retrofit Downlight 5/6-inch round luminaires	12
SD5R	Surface-mount Downlight 5-inch round luminaires	14
SD7R	Surface-mount Downlight 7-inch round luminaires	14
S4S	SlimSurface 4-inch square luminaires	15
S5R	SlimSurface 5-inch round luminaires	15
S6S	SlimSurface 6-inch square luminaires	15
S7R	SlimSurface 7-inch round luminaires	15
S10R	SlimSurface 10-inch round luminaires	15



Support is always available

For technical support

1 (800) 573-1659
LOL.webmaster@philips.com
www.philips.com/luminaires

For customer support

1 (800) 555-0050
www.usa.lighting.philips.com/
support/connect/contact-us



© 2018 Philips Lighting Holding B.V. All rights reserved. Philips reserves the right to make changes in specifications and/or to discontinue any product at any time without notice or obligation and will not be liable for any consequences resulting from the use of this publication.

PLI-1801BR 02/18 www.philips.com/luminaires

Philips Lighting
North America Corporation
200 Franklin Square Drive
Somerset, NJ 08873
Tel. 855-486-2216

Philips Lighting Canada Ltd.
281 Hillmount Rd,
Markham, ON,
Canada L6C 2S3
Tel. 800-668-9008