

A perfect blend of design, performance and value



LPF1



LPF2



LPF3*



LPF4*

*Slipfitter shown, trunnion mount also available

LYTEPRO LED FLOODLIGHTS

Philips Keene LytePro LED Floodlights are contractor friendly solutions that deliver excellent performance and energy savings.

Benefits

- Available in 4 compact architectural housings
- Multiple mountings available in the LPF3 and LPF4
- Lumen package ranges from 1,700 to 9,000+ with efficacies of 79-89 lumens per watt
- Effectively replaces HID products from 70-250W minimum
- 4000K neutral white is standard, 5000K cool white is optional, minimum 80 CRI
- Optics provide excellent uniformity ideal for general facade, target and landscape illumination
- Fixtures are IP66 rated and suitable for use in ambients from -40°C to 40°C
- LPF1 and LPF2 have a minimum rated system life of 100K hours for the driver and LED (L_{70}) at a 30°C ambient
- LPF3 and LPF4 have a minimum rated system life of 80K hours for the driver and LED (L_{70}) at a 30°C ambient
- 5 year limited warranty
- Full four color POP packaging in the LPF1, LPF2 and LPF3 with additional merchandising materials available for display
- Stocked in 8 different dark bronze configurations
- Additional made to order configurations available in three colors, and are assembled in the USA, consult factory for lead time



**PHILIPS
KEENE**

LYTEPRO LED FLOODLIGHTS

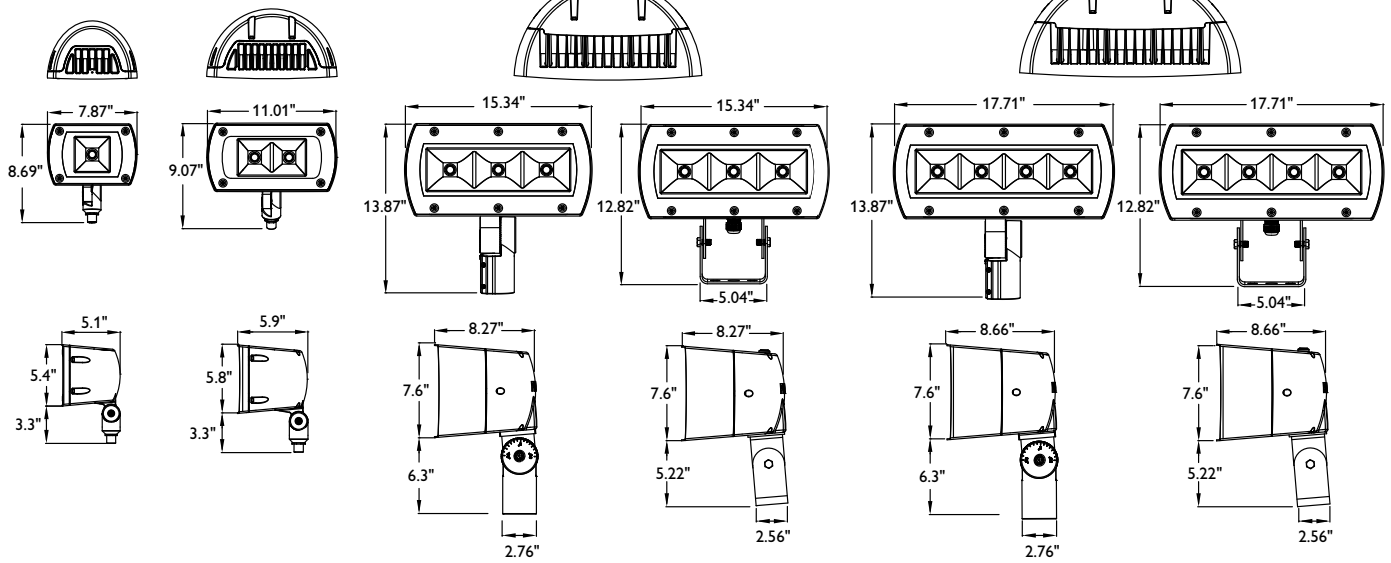
Dimensions

LPF1 (20W) Micro

LPF2 (40W) Small

LPF3 (85W) Medium

LPF4 (105W) Large



Made to Order Luminaires – Ordering Guide¹

Series/# of COB	Drive Current	Color Temperature	Distribution	Mounting	Options	Voltage	Finish
LPF1 Micro	E 500 mA	4K 4000K ²	FL Flood	K Knuckle 1/2" NPT	F1 ³ Single Fusing	1 120V	BZ Textured Dark Bronze
LPF2 Small		5K 5000K ²			F2 ⁴ Double Fusing	2 208V	WH Textured White
LPF3 Medium	C 700 mA		FL Flood	S Slipfitter 2-3/8" O.D.	F3 ⁵ Double Fusing, Canada	3 240V	DGY Textured Dark Gray
LPF4 Large					PCB ⁶ Photocontrol	4 277V	
			SP Spot	T Trunnion	DM25 ^{7,8} Dynadimmer	6 347V	
						8 120-277V	

1. MTO configurations are assembled in the USA.

2. Both 4K and 5K options have a minimum 80 CRI

3. 'F1' for 120, 277, 347V

4. 'F2' for 208, 240V

5. 'F3' for 208, 240V Canadian double pull

6. Specify voltage. 'PCB' not available with '8' universal voltage option

7. 'DM25' only available 120-277V and dims to 25% for 6 hours

8. Dynadimmer is suitable for use from -30°C to 40° temperature ambient only

Accessories – Ordering Guide (must be ordered separately)

Catalog #	Description
LPF(*)WG ^{9,10}	Wire Guard (*Specify Size)
LPF(*)SG ^{9,10}	Stone Guard (*Specify Size)

9. Limited quantities stocked in our Cornwall Distribution facility.

10. Contact factory for availability of large order quantities.

11. All stock products are 'BZ' Textured Dark Bronze, '4K' Neutral White and 'FL' Flood Optics.

12. Stock LPF products ship out of our Cornwall Distribution facility.

13. Always consult factory for current inventory levels. Larger quantities may be converted to MTO if necessary.

14. LPF1, LPF2 & LPF3 are provided with full 4-color POP packaging, LPF4 is provided in a standard shipper box.

Stocked Luminaires – Ordering Guide^{11,12,13,14}

Catalog #	Description	Master Pack, QTY	UPC Code
STKLFP1K-8	LPF1, Knuckle Mount, 120-277V	Yes, 4	786034956925
STKLFP1K-6	LPF1, Knuckle Mount, 347V	Yes, 4	786034957755
STKLFP2K-8	LPF2, Knuckle Mount, 120-277V	Yes, 4	786034956932
STKLFP2K-6	LPF2, Knuckle Mount, 347V	Yes, 4	786034957762
STKLFP3T-8	LPF3, Trunnion Mount, 120-277V	Yes, 2	786034957779
STKLFP3T-6	LPF3, Trunnion Mount, 347V	Yes, 2	786034957786
STKLFP4T-8	LPF4, Trunnion Mount, 120-277V	1	786034956963
STKLFP4T-6	LPF4, Trunnion Mount, 347V	1	786034957793

Specifications

	LPF1	LPF2	LPF3	LPF4
Average Wattage ¹⁵	20	40	85	105
Initial Lumens (4K & 5K) ¹⁶	1,773	3,460	7,012	6,807
Lumens/Watt	89	87	82	80
NEMA Beam	6H x 6V	6H x 6V	6H x 6V	3H x 3V
50° beam (hor. X vert.)	100° x 100°	93° x 79°	101° x 97°	17° x 17°
10° beam (hor. X vert.)	124° x 128°	127° x 105°	130° x 125°	41° x 38°

15. System input wattage may vary based on input voltage, by up to +/- 8%, and based on manufacturer forward voltage, by up to +/- 4%.

16. Lumen values based on photometric tests performed in compliance with IESNA LM-79.

Predicted Lumen Depreciation Data¹⁷

Ambient Temp. °C	TM-21 Calculated L ₇₀ hrs ^{17,19}	Reported L ₇₀ Per TM-21 ^{18,19}	Lumen Maint. % @60,000 hrs
up to 40°C	269,000 hrs	>48,000 hrs	91.5%

17. Calculated performance derived from LED manufacturer's data and engineering design estimates, based on IESNA LM-80 methodology. Actual experience may vary due to field application conditions.

18. L₇₀ is the predicted time when LED performance depreciates to 70% of initial lumen output.

19. Reported per IESNA TM21-11. Published L₇₀ hours limited to 6 times actual LED test hours.



© 2017 Philips Lighting Holding B.V. All rights reserved.
Specifications are subject to change without notice.
www.philips.com/luminaires

PKe-1401BN 06/17

Philips Lighting
North America Corporation
200 Franklin Square Drive
Somerset, NJ 08873
Phone: 855-486-2216

Philips Lighting Canada Ltd.
281 Hillmount Road
Markham ON, Canada L6C 2S3
Phone: 800-668-9008