

PHILIPS

Light recipe kit E26

Hue White ambiance

1 x E26 bulb

Dimmer switch included

Shades of white (2200-6500K)



046677466961



Helps you to read, relax, concentrate and energize

Get started with the Philips Hue Light Recipe Kit and enjoy smooth wireless dimming or create your ambiance with shades of white lights, from warm white to cool daylight. Or connect everything to the Philips Hue bridge for smart control.

Light for your moments

- Relax
- Read
- Concentrate
- Energize

Easy control and comfort

- Full control from smart device with Hue bridge
- Installation free dimming
- Control up to 10 Philips Hue lights simultaneously
- Place the switch anywhere
- Use as a remote control

Highlights

Relax



Put your feet up and relax with the soft glow of white light for the perfect end of the day. Relaxing white light can help you to unwind in the evening and sleep better at night

Energize



Skip your morning coffee and get ready for the day with cool, bright white daylight that helps to energize your body and mind. Perfect for those moments when your batteries are running low and you need a kickstart

Add up to 10 Hue lights



You can connect up to 10 Philips Hue lights to your Philips Hue dimmer switch and control them simultaneously.

Read



Get lost in your favorite book for hours on end with Philips Hue. It provides you with the right white light for a perfect read

Full control with Hue bridge



Connect your Philips Hue lights with the bridge to unlock the endless possibilities of the system.

Place switch anywhere



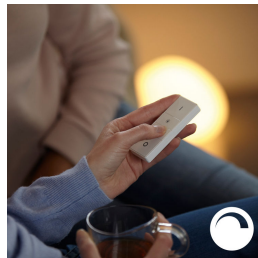
The Philips Hue dimmer switch works as a normal wall switch and dimmer. You can place it anywhere you want, using screws or the adhesive tape on the back plate of the switch

Concentrate



Stay focused with finely tuned bright white light. It can help you get things done quickly and efficiently without distractions, whether you're studying for an exam, working from home, or choosing the perfect outfit to look your best

Installation free dimming



Experience guaranteed smooth dimming with Philips Hue. Not too bright. Not too dark. Just right. No need for wires, an electrician or installation

Use as a remote control



Pick up the remote and use it wherever you want for your comfort. The control unit of the switch is magnetic and can be removed from the base plate.

Specifications

Also tested on

- Android: Yes
- Google Nexus: Yes
- HTC: Yes
- Motorola Nexus: Yes
- Note: Yes
- OnePlus: No
- Samsung Galaxy: Yes
- Sony: No

Environmental

- Operational humidity: 5% <H<95% (non condensing)
- Operational temperature: -10°C – 45°C

Guarantee

- 2 years: Yes

The bulb

- Color temperature: 2200K-6500K
- Diameter: 62 mm
- Fitting: E26
- Form factor: A19
- Height: 109 mm
- Input voltage: 110V-130V
- Lifetime: 25,000 hour(s)
- Light output: Warm white to cool daylight
- Lumen output: 800 lm @ 4000K
- Max. operation power: 10 W
- Max. standby power: 0,1 W
- Software upgradable: when connected to Hue bridge
- Start up: Instant 100% light output
- Wattage: 10 W
- Diameter: 2.4 inch
- Height: 4.3 inch

What's in the box

- Bridge: No
- Ethernet network cable: No
- Hue bulbs: No
- Hue dimmer switch: 1
- Hue Tap switch: No
- Hue white bulbs: No
- Power adapter: No
- Tone bulbs: 1

What's supported

- HomeKit compatible: Yes
- IOS: Yes
- iPad: Yes
- iPad Air: No
- iPad Mini: No
- iPhone: Yes
- iPod Touch: No



Issue date: 2023-11-07
Version: 0.478

© 2023 Signify Holding. All rights reserved. Signify does not give any representation or warranty as to the accuracy or completeness of the information included herein and shall not be liable for any action in reliance thereon. The information presented in this document is not intended as any commercial offer and does not form part of any quotation or contract, unless otherwise agreed by Signify. Philips and the Philips Shield Emblem are registered trademarks of Koninklijke Philips N.V.

www.lighting.philips.com