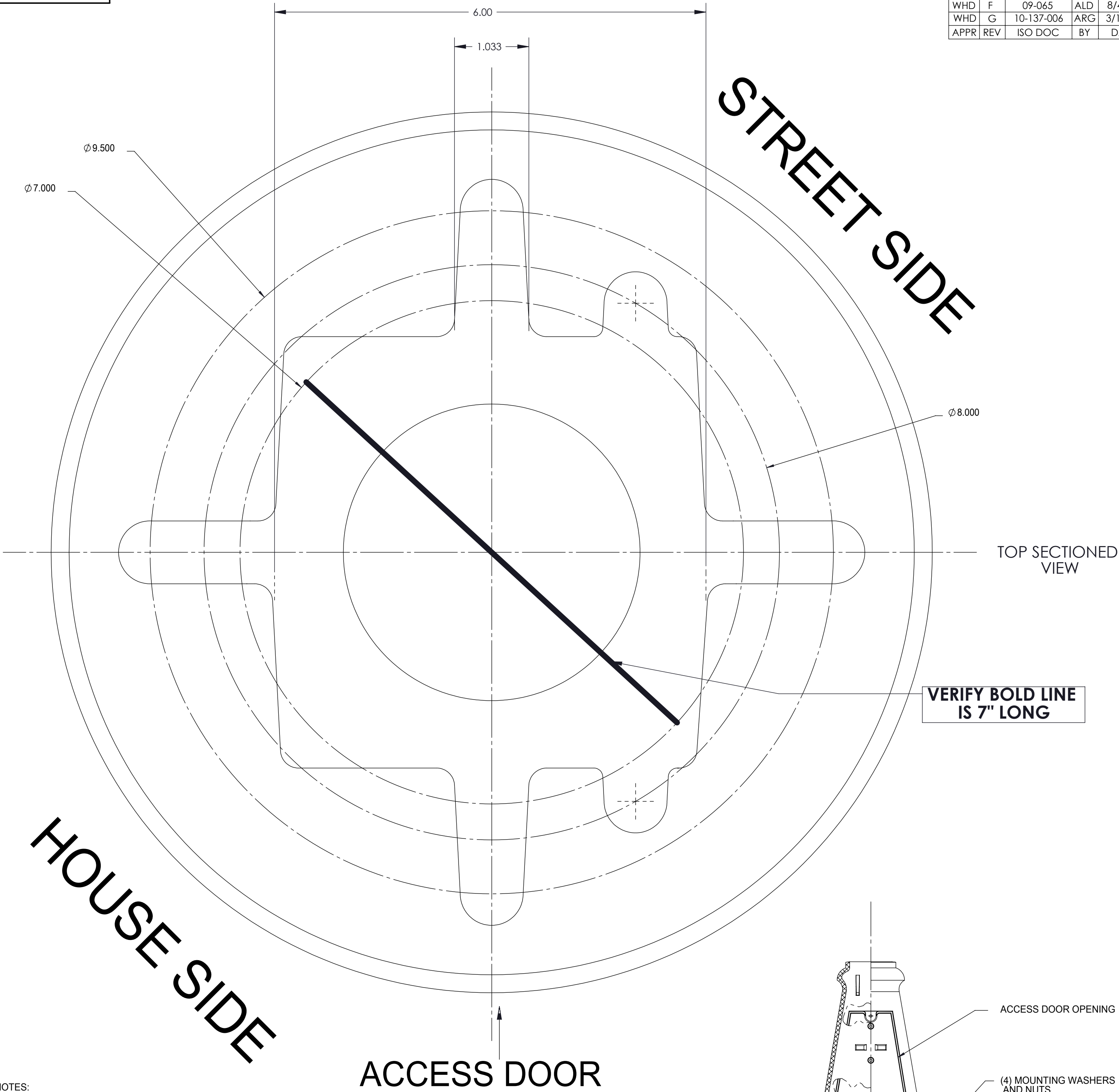


WHD	E	08-039	ALD	8/26/08
WHD	F	09-065	ALD	8/4/09
WHD	G	10-137-006	ARG	3/15/11
APPR	REV	ISO DOC	BY	DATE



- NOTES:
- (4) ANCHOR RODS:
SUGGESTED BOLT CIRCLE: 9 1/2" DIAMETER
MAXIMUM DIAMETER: 9 1/2" DIAMETER
MINIMUM DIAMETER: 7" DIAMETER

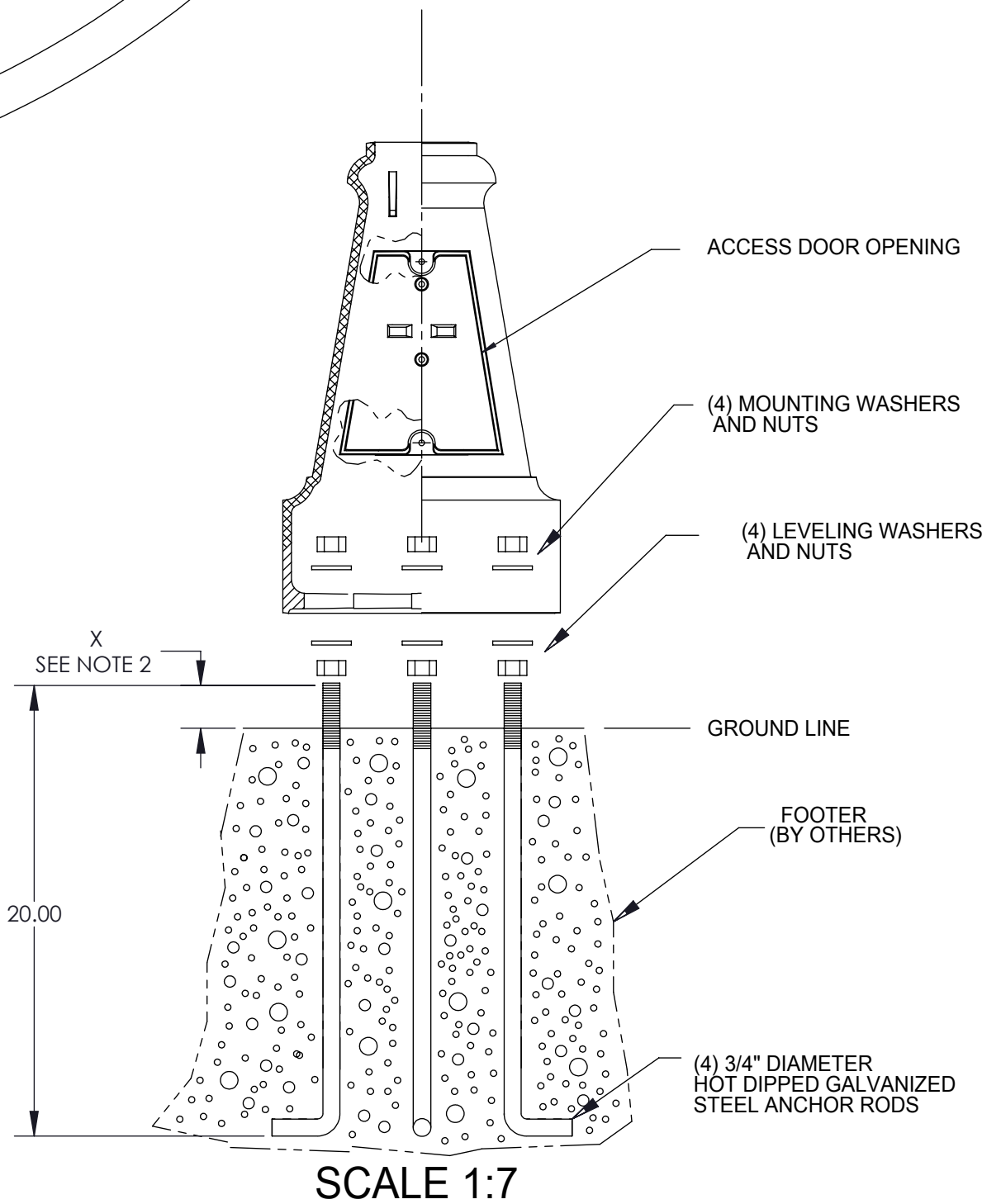
- (3) ANCHOR RODS:
USE ONLY ON AN 8" DIAMETER BOLT CIRCLE.

- PHILIPS STRONGLY RECOMMENDS USING LEVELING NUTS TO MOUNT THE POST BASE. IF FOUNDATION IS NOT LEVEL, INCREASE "X" DIMENSION ACCORDINGLY WHEN USING LEVELING NUTS WITH WASHERS.

X = 2 3/4" WITH LEVELING NUTS
X = 2" WITHOUT LEVELING NUTS

- IF USING GROUTING TO CONCEAL GAP BETWEEN BASE AND FOUNDATION, ALLOW FOR WATER DRAINAGE.

WARNING
NOT TO SCALE
CONSULT FACTORY FOR
FULL SIZE TEMPLATE.



PHILIPS 100 Craftway, P.O. Box 128 Littlestown, Pennsylvania 17340-0128	CONFIDENTIAL: This drawing is confidential and proprietary to Philips and may not be reproduced in whole or in part without the express written consent of Philips. All rights reserved. © 2011 by Philips Electronics.			TITLE: TEMP,P1915	
	DRAWN BY: T.A. GOLDEN	DATE: 7/15/98	DRW SIZE: C	MATERIAL: 17 X 22 WHITE BOND PAPER,	
	CHECKED BY: B. DORON	DATE: 8/4/09			
	APPR BY: E. HADDAD	DATE: 7/15/98			
* DO NOT SCALE THIS DRAWING *	EF-04-01-11 Rev.09	SCALE 1:1	SHEET 1 OF 1	PART NO:	101700944